

Enhancing Coordination of Behavioral Health Services after Superstorm Sandy: Planning for Future Disasters

Final Data Profile: Jersey City Community Medicare Fee-for-Service Beneficiaries

Demographics, Behavioral Health Conditions, and Utilization of Health Services (Medicare Fee-for-Service Beneficiaries)

July 8, 2014



This Page Left Intentionally Blank

Preface	1
Introduction.....	2
HQSI Project Team.....	7
Acknowledgements.....	8
Executive Summary	9
Demographics.....	11
• Total Medicare FFS Beneficiaries	11
• Percent of Medicare FFS Beneficiaries in the General Population in 2012	11
• Percent of Medicare FFS Beneficiary Population by Female.....	11
• Percent of Medicare FFS Beneficiary Population by Race	12
• Percent of Medicare FFS Beneficiary Population by Age.....	12
• Median Household Income (65 Years and Above)	12
Behavioral Health Conditions	13
• Prevalence and Incidence.....	13
– Summary	13
– Depression or Proxy Disorders	16
– Depression.....	22
– Anxiety Disorders	23
– Adjustment Disorders	24
– Post-Traumatic Stress Disorder.....	25
– Alcohol or Substance Abuse	26
– Substance Abuse Alone	27
– Suicide and Intentional Self-Inflicted Injury.....	28
• Risk Factors for Depression or Proxy Disorders.....	29
– Summary	29
– Any of the Top Five Risk Factors for Depression or Proxy Disorders	30
– Alzheimer's Disease and Related Disorders or Senile Dementia.....	33
– Sleep Disturbance.....	33
– Substance or Alcohol Abuse or Tobacco Use	33
– Hip/Pelvic Fractures	34
– Amputations	34
Utilization	35
• Utilization of Outpatient Behavioral Health Services	35
– Assessments	35
› Summary	35
› Depression Screening	35

TABLE OF CONTENTS

› Neuropsychological Tests	40
› Psychiatric Diagnostic Procedures	42
– Therapies	44
› Summary	44
› Individual Psychotherapy	45
› Family Psychotherapy	47
› Group Psychotherapy	48
• Inpatient Health Services	49
– Summary	49
– Psychiatric Hospital Admissions	50
– Acute Care Hospitals	51
› Admissions	51
› Observation Stays	52
› Emergency Department Visits	53
– Within 30 Days of Acute Care Hospital Discharge	54
› Summary	54
› 30-Day Hospital Readmissions	55
› Observation Stays Within 30 Days of Discharge	56
› Emergency Department Visits Within 30 Days of Discharge	57
– Other Settings	58
› Summary	58
› Home Health Agency Services	59
› Skilled Nursing Facility Services	60
› Hospice Services	61
› Medical Rehabilitation Services	62
• Listing of Major Health Providers	63
• Jersey City Community Providers	64
• Appendix A: Behavioral Health Conditions	65
• Appendix B: Risk Factors for Depression or Proxy Disorders	68
• Appendix C: Utilization of Outpatient Mental Health Services	72
• Appendix D: Utilization of Services – Inpatient and Other Settings	74
• Appendix E: Time Frames and Formulae	76
• Appendix F: References	77
• Appendix G: Provider Summary Tables and Provider Listings	78
Index of Figures	81

On October 29, 2012, Superstorm Sandy hit the Eastern Seaboard, impacting more than a dozen states. New Jersey, which took the brunt of the storm along its densely populated coastline, was devastated. Thousands of residents were displaced, their homes and communities damaged or destroyed.

Lessons learned from prior natural disasters showed that victims of storms like Superstorm Sandy are often at an elevated risk for acute or behavioral health issues such as post-traumatic stress disorder (PTSD), depression, and substance abuse.^{1,2} While disaster-related issues subside over time, evidence shows that victims can experience a prolonged period of elevated risk, especially those with pre-existing mental health issues.³ Older adults and disabled residents with mental health conditions are at increased risk of deteriorating health, depression, increased isolation, and breakdown in the continuum of health care. Additionally, past natural disasters also show that access to informational resources on disaster-related mental health disorders, outcomes, and service utilization are important factors to consider.^{4,5}

This final community profile can help healthcare professionals learn more about the behavioral health status and utilization patterns of Medicare Fee-for-Service (FFS) beneficiaries before and after Superstorm Sandy. As such, it may be a useful tool in planning for future disasters. The profile explores community-level health status and health determinants of post-disaster spikes in behavioral health issues and treatments. This last update includes one more quarter of comprehensive post- Sandy data than the previous profile, which was published in May 2014.

Enhancing Coordination of Behavioral Health Services after Superstorm Sandy: Planning for Future Disasters is a Special Innovation Project funded by the Centers for Medicare & Medicaid Services (CMS). As part of this project, Healthcare Quality Strategies, Inc. (HQSI), the CMS quality improvement organization (QIO) for New Jersey, studied data on prevalence and incidence of selected behavioral health conditions, the utilization of health services, and demographic information from the Medicare claims database for Medicare FFS beneficiaries residing in the 10 New Jersey FEMA-declared disaster counties after Superstorm Sandy. From its analysis, HQSI created data profiles for 10 FEMA-designated counties, as well as a subset of 10 selected communities.

This final profile is the last update planned for the Jersey City community and includes data from January 1, 2011 to December 31, 2013. The Jersey City community was selected because it had high rates of Medicare FFS beneficiaries both with and at risk for depression or proxy disorders prior to Superstorm Sandy. This profile can be used to determine and compare the community's prevalence and incidence of the selected behavioral health conditions and utilization of services to its county rate before and after Superstorm Sandy.

The data in the profile is based on Medicare FFS claims data and provides a glimpse into the prevalence and incidence of selected behavioral health conditions and risk factors for depression, as well as the utilization of Medicare-covered behavioral health services among Medicare beneficiaries residing in the community before and after Superstorm Sandy. Since patients with behavioral health conditions may receive other health services because of medical problems caused by their behavioral health conditions or they may avoid utilizing behavioral health services, this report also looks at the utilization of non-behavioral health services.

The county and community profiles are being shared with state and local governments and agencies, health care providers, community-based organizations, and the research community to support a community-based approach to enhance the coordination of behavioral health services after a natural disaster, and to increase utilization of the Medicare depression screening benefit which became a covered service in October 2011. This benefit is important for victims of major disasters like Superstorm Sandy who are often at an elevated risk for behavioral health issues and can experience a prolonged period of elevated risk after a disaster. Older adults and disabled residents with behavioral health conditions in particular are at increased risk of deteriorating health, depression, increased isolation, and breakdown in the continuum of health care. They are also less likely to report symptoms, which a depression screening can capture.

WHAT'S NEW IN THIS UPDATE

This second updated profile shows four quarters of post-Sandy data, with the most updated claims from January 2011 to December 2013. The profile compares the 12-month rates from the year before and after the storm. In this profile, we define October 2011 to September 2012 as the year before Superstorm Sandy, October 1, 2012 through December 31, 2012 as the time frame when Superstorm Sandy occurred, and January 2013 to December 2013 as the year after the storm.

HOW TO USE THIS PROFILE

This profile includes an analysis of the eight behavioral health conditions which, based on literature review and feedback from the subject matter experts consulted for this project, were found to increase after natural disasters.

This profile is divided into the following sections, each of which is preceded by a user-friendly overview:

- Demographics (page 11)
- Prevalence and incidence of behavioral health conditions (page 13)
- Risk factors for depression or proxy disorders (page 29)
- Utilization of outpatient behavioral health assessments (page 35)
- Utilization of outpatient behavioral health therapies (page 44)
- Utilization of inpatient health services (page 49)
- Utilization of inpatient health services within 30 days of acute care hospital discharge (page 54)
- Utilization of other settings (page 58)
- Listing of major health providers (page 63)

Here are some additional tips for using this profile:

- Use the Executive Summary (pages 9-10) for a quick overview of this profile's key points, as well as a snapshot table that summarizes the prevalence of the selected behavioral health conditions and utilization of behavioral health services before and after Sandy
- Use the Behavioral Health Conditions section (pages 13-34) for in-depth analyses and graphical comparison on the prevalence and incidence of eight behavioral health conditions before and after Superstorm Sandy
- Use the New Jersey and county maps to: identify areas with higher rates of Medicare FFS beneficiaries at risk for depression and proxy disorders (pages 31-32); and areas with low utilization of the depression screening benefit (pages 38-39)

METHODOLOGY

Each community profile compares the community's statistics to the statistics of the county where each community is located. Primary data sources include Medicare FFS Part A and Part B claims, the Medicare enrollment database, and U.S. Census data. The Medicare enrollment database includes basic demographic statistics such as age, gender, and race while the U.S. Census data provides a proxy indicator (average household income) for socio-economic status.⁶ Based on the ICD-9-CM (International Classification of Disease, Ninth Revision, Clinical Modification), CPT (Current Procedural Terminology), or HCPCS (Healthcare Common Procedure Coding System) codes in Medicare Part A and Part B claims, beneficiaries were identified for diseases/conditions related to behavioral health conditions such as depression. Appendices A through G contain documentation, technical notes, codes, algorithms, data sources, and references.

Medicare Part A claims were also used to analyze utilization of health services in acute care hospitals, skilled nursing facilities, medical rehabilitation facilities, home health agencies, hospice, and inpatient psychiatric facilities. Medicare Part A and Part B claims provide information on the utilization of mental health outpatient services for assessment (e.g., depression screening, diagnostic psychological tests) and treatment (e.g., individual psychotherapy, biofeedback therapy).

To identify beneficiaries with an elevated risk of depression after the storm, HQSI conducted a literature review of risk factors for depression (see Appendix B). Previous studies identified psychosocial and biological factors, increased age, history of cancer, Parkinson's disease, Alzheimer's disease, changes in mental function, and medication side effects as risk factors for developing depression. Based on findings from the literature review and factors available through Medicare claims, logistic regression analysis was conducted with Medicare claims, and the top five risk factors (Alzheimer's disease and related disorders or senile dementia, hip/pelvic fractures, amputations, substance or alcohol abuse or tobacco use, and sleep disturbance) were used to identify beneficiaries with high risk for developing depression or proxy disorders (i.e., anxiety and adjustment disorders).

MEASUREMENT TIME FRAMES

This profile includes data from January 1, 2011 through December 31, 2013. Results are presented using different charts and measurement time frames as follows:

- Annual bar charts show the annual rates in the year before (October 1, 2011 to September 30, 2012) and after (January 1, 2011 to December 31, 2013) Superstorm Sandy. Statistics on demographics, prevalence of behavioral health conditions, and utilization of health services are presented for this 12-month period. These statistics allow for comparison before and after Superstorm Sandy
- Annual trend charts with rolling quarters for the behavioral health conditions and utilization statistics are included to adjust for seasonal variation and to examine possible changes in the year before and after Superstorm Sandy. The time period includes nine data points from January 1, 2011 to December 31, 2013
- Annual percent change (relative change) bar charts show relative increase or decrease in rates from the year before and after Superstorm Sandy. These statistics allow for comparison of the community to the county and to analyze the potential impact of Superstorm Sandy
- Quarterly new incidence charts for eight behavioral health conditions include eight quarters of data from January 1, 2012 to December 31, 2013. This allows for the identification of new cases in a given quarter when compared to the prior year
- Quarterly line charts show the trend in the utilization of depression screening for eight quarters from January 1, 2012 to December 31, 2013

DATA CONSIDERATIONS

There are now four quarters of post-storm data available, which are reflected in this final update. The claims data processing lag of at least six months, coupled with the one-year project time frame, reduces the optimal time frame for more accurate estimation of post-Sandy effects.

Identification of beneficiaries with behavioral health conditions is based on diagnoses being reported in Medicare FFS claims and could result in underestimation. There is no accurate way to identify when certain health conditions began and ended when claims data is used.

According to the subject matter experts consulted for this project, unlike other conditions, behavioral health issues are often underdiagnosed in our society and the stigma associated with behavioral health conditions may prevent people from seeking care in mental health facilities. The subject matter experts also indicated that estimating the prevalence of depression using claims data can be particularly difficult as depression is often undiagnosed or not documented. Depression can be present with symptoms of anxiety and adjustment disorders. Based on this feedback, a combination measure named “depression or proxy disorders” was created to estimate prevalence and incidence of depression. If a patient had at least one of the three conditions reported in Medicare claims, he/she was flagged as having depression or proxy disorders.

This community profile can be used to compare the prevalence and incidence rates of eight selected behavioral health conditions (see page 19) based on the ICD-9-CM codes through the analysis of Medicare claims. This profile may be used to prioritize and plan community and county preparation for the care, tracking, and monitoring of Medicare beneficiary behavioral health status and health care utilization patterns.

This is the final update of these data profiles which includes one more quarter of data than the previous profile during the post-Superstorm Sandy time period as the project ends on July 31, 2014.

Martin P. Margolies

Chief Executive Officer

Mary Jane Brubaker, MCIS

Chief Operating Officer

Diane Babuin, MS, CPHQ

Director, Quality Improvement and Communications

Ya-ping Su, PhD

Director, Research and Analysis

Suzanne Dalton, RN, BS, EdM

Project Manager

Andrew Miller, MD, MPH

Medical Director

Mona Abdalla, BA

Administrative Associate

Christine Aisenberg, BA

Proofreader

Kathy Brown, BS

InDesign Specialist

Zhengyu Bu, MS

Health Services Research Analyst

Sue Chen, MS

Statistician

Wei-Yi Chung, MS

Database Administrator

Barbara Coleman

Administrative Associate

Dawn Cullen, BA

Communications Specialist

Ashley Dopp, BA

Communications Specialist

Karen Hale, MEd

Community Liaison

Kim Karnell, BS

Information Specialist

Janet Knoth, BS, RN, CHPN, CPHQ

Quality Improvement Specialist

Judy Miller, MS, RN

Quality Improvement Specialist

Olubukunola Oyedele, MPH

Community Liaison

Rita Pascale

Administrative Associate

Barbara Perzyna, BS

Visual Communications Specialist

Ziphora Sam, MPH

Epidemiologist

Marianne Sagarese, BSN, RN

Quality Improvement Specialist

Nicole Skyer-Brandwene, MS, RPh, BCPS

Quality Improvement Specialist

ACKNOWLEDGEMENTS

Special thanks to the subject matter experts who assisted with the project by providing feedback and guidance to the HQSI project team.

Carol Benevy, MSW

New Jersey Hope and Healing Project
Barnabas Health Institute for Prevention

Mary Ditri, MA, CHCC

New Jersey Hospital Association

Adrienne Fessler-Belli, MSW, LCSW

New Jersey Department of Human Services
Disaster & Terrorism Branch

Mark Firth, MA, MSW

New Jersey Department of Human Services
Division of Mental Health and Addiction Services

Mary Goepfert, MPA, APR, CPM

New Jersey Group for Access and Integration Needs in Emergencies and Disasters

Sheldon Green

New Jersey Primary Care Association

Connie Greene, MA, CAS, CSW, CPS

Barnabas Health Institute for Prevention

Bob Kley

Mental Health Association in New Jersey, Inc.

Lynn Kovitch, MEd

New Jersey Department of Human Services
Division of Mental Health and Addiction Services

Karen McCoy, RN, BSN

Home Care Association of New Jersey

Elyse Perweiler, MPP, RN

NJ Institute for Successful Aging

Lynn Stefanowicz, MA, LCSW

Meridian Behavioral Health

Megan Sullivan, LPC, LCADC, DRCC

New Jersey Department of Human Services
Disaster & Terrorism Branch

Pete Summers

The New Jersey Association of County and City Health Officials (NJACCHO)

KEY OBSERVATIONS

The following observations show the Jersey City community's percent change and rates after Superstorm Sandy among Medicare FFS beneficiaries.

1. The Jersey City community experienced a larger decrease in depression or proxy disorders (9.23%), depression alone (8.50%), and adjustment disorders (9.72%) than Hudson County.
2. The Jersey City community experienced a larger increase in PTSD (9.31%) than Hudson County.
3. The demographic breakdown of Medicare FFS beneficiaries residing in the Jersey City community, who experienced higher rates of depression or proxy disorders, is as follows: Hispanics (229.49 per 1,000 beneficiaries), females (189.67 per 1,000 beneficiaries), and those below age 65 (300.39 per 1,000 beneficiaries).
4. Among the risk factors, the Jersey City community experienced a larger decrease in Alzheimer's disease and related disorders or senile dementia (8.36%), sleep disturbance (5.19%), and amputations (15.84%) than Hudson County.
5. Annual depression screening in the Jersey City community increased from 2.19 per 1,000 beneficiaries before the storm to 3.75 per 1,000 beneficiaries after the storm.
6. The Jersey City community experienced a larger decrease in psychiatric diagnostic procedures (24.87%), but a larger increase in neuropsychological tests (26.06%) than Hudson County.
7. The Jersey City community experienced a larger increase in the utilization of individual psychotherapy (7.81%) and a larger decrease in the utilization of family psychotherapy (57.06%) than Hudson County.
8. The Jersey City community experienced a larger decrease in psychiatric hospital admissions (22.17%) than Hudson County.
9. The Jersey City community experienced a larger decrease in acute care hospital admissions (13.60%) and observation stays (11.22%) than Hudson County.
10. The Jersey City community experienced a larger increase in emergency department visits (19.73%) than Hudson County.
11. The Jersey City community experienced a larger decrease in 30-day hospital readmissions (19.20%) and observation stays within 30 days of discharge (18.10%) than Hudson County.
12. The Jersey City community experienced a larger decrease in the utilization of home health agency (15.92%) and hospice (18.86%) services than Hudson County.

EXECUTIVE SUMMARY

The *Snapshot of the Jersey City Community* (Figure 1) summarizes the prevalence of the behavioral health conditions as well as risk factors for depression or proxy disorders analyzed for this profile. This *Snapshot* also lists the most frequently performed behavioral health assessments and therapies in the Jersey City community compared to the average of Hudson County. The non-behavioral health utilization measures that were calculated for this profile are not included in the *Snapshot*.

Figure 1. Snapshot of Jersey City						
Behavioral Health Disorders	Prevalence per 1,000 Medicare FFS Beneficiaries					
	Jersey City			Hudson County		
	10/1/11 – 9/30/12	1/1/13 – 12/31/13	% Change	10/1/11 – 9/30/12	1/1/13 – 12/31/13	% Change
Depression or Proxy Disorders	183.41	166.48	-9.23	211.72	211.02	-0.33
• Depression alone	116.66	106.74	-8.50	138.29	136.51	-1.29
• Anxiety Disorders alone	100.45	89.59	-10.81	117.35	120.44	2.63
• Adjustment Disorders alone	25.42	22.95	-9.72	32.63	31.64	-3.03
Alcohol or Substance Abuse	41.93	41.25	-1.62	31.87	36.71	15.19
• Substance Abuse alone	21.98	22.05	0.32	16.46	17.31	5.16
PTSD	2.47	2.70	9.31	3.28	3.48	6.10
Suicide and Intentional Self-Inflicted Injury	5.57	4.50	-19.21	4.33	4.64	7.16
Any of the Top Five Risk Factors* for Depression or Proxy Disorders						
• Any of the Top Five Risk Factors	141.44	139.49	-1.38	132.83	136.15	2.50
• Substance or Alcohol Abuse or Tobacco Use	71.29	74.95	5.13	65.04	72.73	11.82
• Alzheimer’s Disease and related disorders or Senile Dementia	51.78	47.45	-8.36	49.83	45.76	-8.17
• Sleep Disturbance	26.21	24.85	-5.19	25.08	24.52	-2.23
• Hip/Pelvic Fractures	6.75	6.40	-5.19	6.46	7.11	10.06
• Amputations	2.02	1.70	-15.84	1.34	1.17	-12.69
Behavioral Health Services	Utilization per 1,000 Medicare FFS Beneficiaries					
	Jersey City			Hudson County		
	10/1/11 – 9/30/12	1/1/13 – 12/31/13	% Change	10/1/11 – 9/30/12	1/1/13 – 12/31/13	% Change
Assessments						
• Depression Screening**	2.19	3.75	71.23	2.83	9.95	251.59
• Psychiatric Diagnostic Procedures	41.93	31.50	-24.87	50.84	45.13	-11.23
• Neuropsychological Tests	11.78	14.85	26.06	16.90	17.34	2.60
Therapy						
• Individual Psychotherapy	47.99	51.74	7.81	57.04	57.83	1.38
• Family Psychotherapy	3.26	1.40	-57.06	5.06	2.68	-47.04
• Group Psychotherapy	2.62	2.50	-4.58	2.42	2.19	-9.50
Psychiatric Hospital Admissions	10.15	7.90	-22.17	9.84	8.36	-15.04

*The top five risk factors were identified based on findings from a literature review (Appendix B) and factors available through Medicare claims. Logistic regression analysis was conducted with Medicare claims.

**Depression Screening comparison time frames are different (January 1, 2012 – December 31, 2012 vs. January 1, 2013 – December 31, 2013) due to availability of depression screening data starting in January 2012.


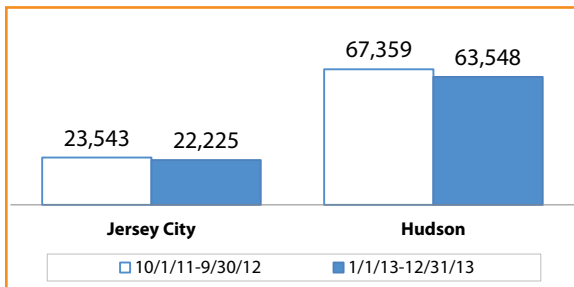
Medicare FFS Demographics		Jersey City	
At A Glance (January 1, 2013 – December 31, 2013)			
Total Medicare FFS Population	22,225		
Females	12,606 (56.72%)		
Males	9,619 (43.28%)		
White	9,392 (42.26%)		
Black	6,117 (27.52%)		
Asian	2,565 (11.54%)		
Hispanic	2,129 (9.58%)		
Other	2,022 (9.10%)		
Average Age	69.89		
ZIP Codes	07302, 07303, 07304, 07305, 07306, 07307, 07308, 07310		
Source: Medicare Claims Database			

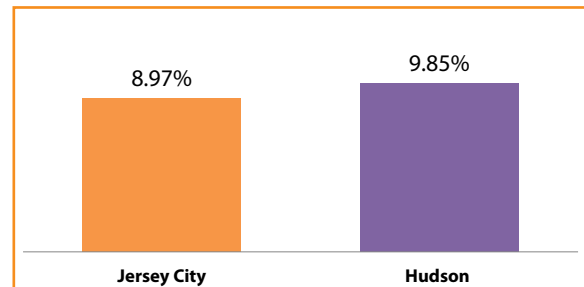
FIGURE 2. TOTAL MEDICARE FFS BENEFICIARIES*



* Total beneficiaries who were under Medicare FFS coverage for at least one month during the time frame.

The total Medicare FFS population of the Jersey City community prior to Superstorm Sandy was 23,543. After the storm, this number decreased to 22,225.

FIGURE 3. PERCENT OF MEDICARE FFS BENEFICIARIES IN THE GENERAL POPULATION IN 2012*



* Source: Medicare denominator file CY 2012, U.S. Census Bureau, American Cancer Survey (ACS), 2012 <http://www.census.gov/>.

Medicare FFS beneficiaries made up 8.97% of the Jersey City community in calendar year 2012.

FIGURE 4. PERCENT OF MEDICARE FFS BENEFICIARY POPULATION BY FEMALE

	10/1/11 – 9/30/12	1/1/13 – 12/31/13	Absolute Change*
Jersey City	57.18	56.72	-0.46
Hudson County	57.49	57.18	-0.31

* Due to rounding, the absolute change may not be the same as the difference subtracted from the two time frames shown.

Prior to the storm, females made up 57.18% of the entire Medicare FFS population residing in the Jersey City community and males made up 42.82%. After the storm, the female beneficiary population decreased to 56.72% and males increased to 43.28%.

FIGURE 5. PERCENT OF MEDICARE FFS BENEFICIARY POPULATION BY RACE

Race	Jersey City			Hudson		
	10/1/11 – 9/30/12	1/1/13 – 12/31/13	Absolute Change*	10/1/11 – 9/30/12	1/1/13 – 12/31/13	Absolute Change*
White	43.62	42.26	-1.36	61.88	61.02	-0.86
Black	27.52	27.52	0.01	12.02	12.04	0.02
Hispanic	9.91	9.58	-0.33	14.98	14.75	-0.23
Asian	11.04	11.54	0.51	5.38	5.59	0.21
Other	7.92	9.10	1.18	5.74	6.61	0.87

* Due to rounding, the absolute change may not be the same as the difference subtracted from the two time frames shown.

Both before and after Superstorm Sandy, the majority of Medicare FFS beneficiaries residing in the Jersey City community were White followed by Black, Asian, and Hispanic.

FIGURE 6. PERCENT OF MEDICARE FFS BENEFICIARY POPULATION BY AGE*

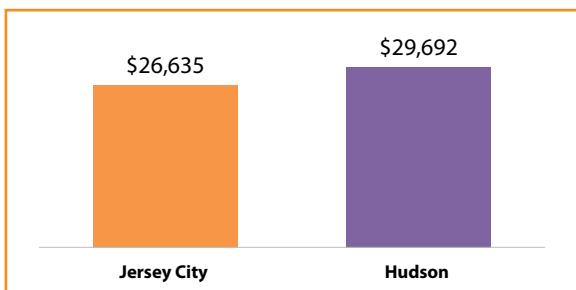
Age	Jersey City			Hudson		
	10/1/11 – 9/30/12	1/1/13 – 12/31/13	Absolute Change**	10/1/11 – 9/30/12	1/1/13 – 12/31/13	Absolute Change**
<65	20.07	19.55	-0.52	16.55	16.26	-0.29
65 – 74	45.18	46.42	1.24	43.81	44.76	0.95
75 – 84	23.41	23.12	-0.29	26.27	25.86	-0.41
85 and Above	11.34	10.91	-0.43	13.37	13.12	-0.26
Average Age	69.94	69.89	-0.05	71.49	71.41	-0.08

* Age calculated as end date of time frame or date of death minus birth date.

** Due to rounding, the absolute change may not be the same as the difference subtracted from the two time frames shown.

Both before and after Superstorm Sandy, the largest age group of Medicare FFS beneficiaries residing in the Jersey City community was between ages 65 and 74 years old, followed by beneficiaries between 75 and 84 years old. The average age of beneficiaries residing in this community decreased from 69.94 years old prior to the storm to 69.89 years old after the storm.

FIGURE 7. 2012 MEDIAN HOUSEHOLD INCOME (65 YEARS AND ABOVE)



According to U.S. Census Data from 2012, residents aged 65 and older residing in the Jersey City community had a median household income of \$26,635. This was lower than the average income among seniors residing in all of Hudson County.

Source: U.S. Census Bureau, American Community Survey (ACS), 2012 <http://www.census.gov/>.

PREVALENCE AND INCIDENCE

Using Medicare FFS claims data, eight behavioral health conditions were analyzed: depression or proxy disorders, depression, adjustment disorder, anxiety disorder, post-traumatic stress disorder (PTSD), alcohol or substance abuse, substance abuse alone, and suicide and intentional self-inflicted injury. These conditions were chosen based on literature review and feedback from subject matter experts.

Claims data can underestimate the real prevalence and incidence of depression in the population and individuals with depression could be diagnosed as having anxiety or adjustment disorders, as noted by the subject matter experts consulted for this project. Therefore, HQSI created a combination measure for depression (depression or proxy disorders) which includes beneficiaries who were reported for either depression, anxiety, or adjustment disorders.

The behavioral health data from January 1, 2011 to December 31, 2013 for these different measures were calculated to quantify condition occurrence:

1. The annual prevalence bar chart compares rates in two annual time frames
2. New incidence in a quarter for the specified condition that was not present in the prior 12 months (Q1 2012 – Q4 2013)
3. The yearly prevalence of the condition with quarterly rolling trends to account for seasonal variation

Refer to Appendix A for measurement calculation and Appendix E for quarterly time frames and formulae.

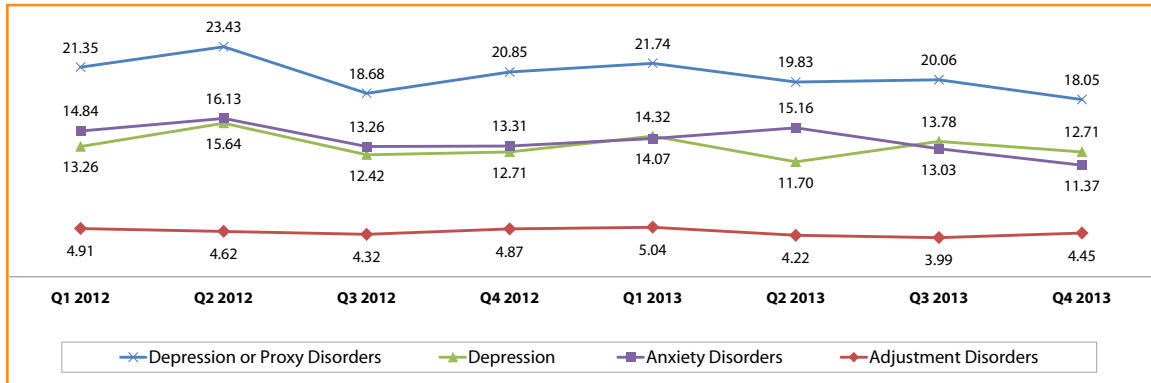
Summary

Figure 8. Percent Change of Prevalence of Selected Behavioral Health Conditions per 1,000 Medicare FFS Beneficiaries						
	Jersey City			Hudson		
	10/1/11 – 9/30/12	1/1/13 – 12/31/13	% Change	10/1/11 – 9/30/12	1/1/13 – 12/31/13	% Change
Depression or Proxy Disorders	183.41	166.48	-9.23	211.72	211.02	-0.33
• Depression	116.66	106.74	-8.50	138.29	136.51	-1.29
• Anxiety	100.45	89.59	-10.81	117.35	120.44	2.63
• Adjustment	25.42	22.95	-9.72	32.63	31.64	-3.03
Alcohol or Substance Abuse	41.93	41.25	-1.62	31.87	36.71	15.19
• Substance abuse alone	21.98	22.05	0.32	16.46	17.31	5.16
PTSD	2.47	2.70	9.31	3.28	3.48	6.10
Suicide and intentional self-inflicted injuries	5.57	4.50	-19.21	4.33	4.64	7.16

The Jersey City community experienced a larger decrease in depression or proxy disorders, depression alone, and adjustment disorders than Hudson County. It also experienced a larger increase in PTSD than Hudson County.

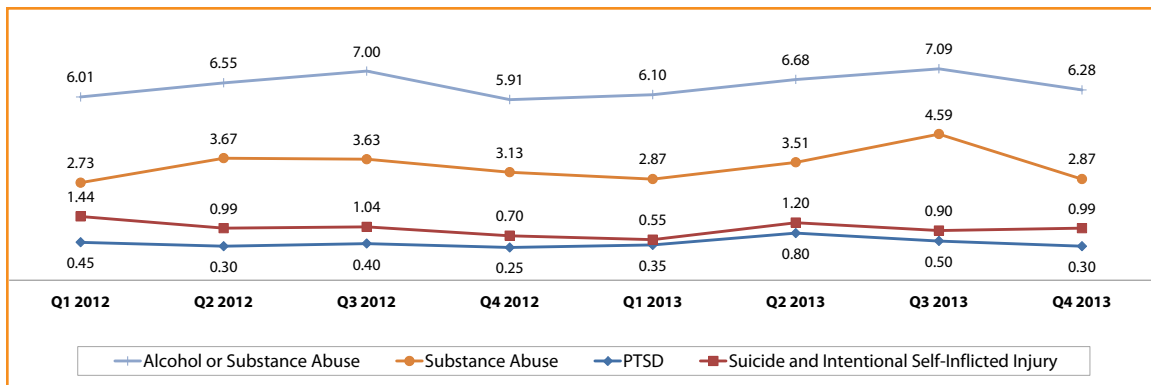
BEHAVIORAL HEALTH CONDITIONS

FIGURE 9. QUARTERLY NEW INCIDENCE TREND OF SELECTED BEHAVIORAL HEALTH CONDITIONS: DEPRESSION OR PROXY DISORDERS* PER 1,000 MEDICARE FFS BENEFICIARIES



* Quarterly new incidence of conditions that were not diagnosed in the prior year.

FIGURE 10. QUARTERLY NEW INCIDENCE TREND OF OTHER SELECTED BEHAVIORAL HEALTH CONDITIONS* PER 1,000 MEDICARE FFS BENEFICIARIES



* Quarterly new incidence of conditions that were not diagnosed in the prior year.

The charts above reflect quarterly trending in new incidence of the eight selected behavioral health conditions among Medicare FFS beneficiaries residing in the Jersey City community.

FIGURE 11. ANNUAL PREVALENCE TREND OF SELECTED BEHAVIORAL HEALTH CONDITIONS: DEPRESSION OR PROXY DISORDERS PER 1,000 MEDICARE FFS BENEFICIARIES

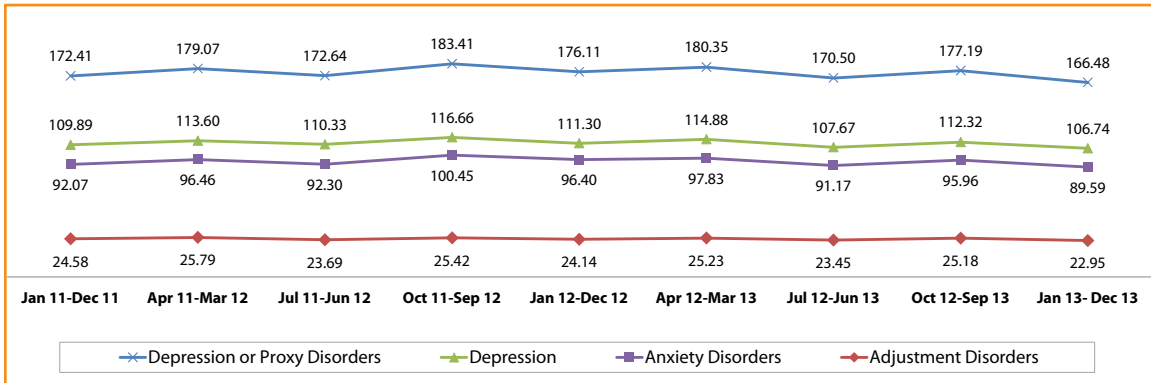
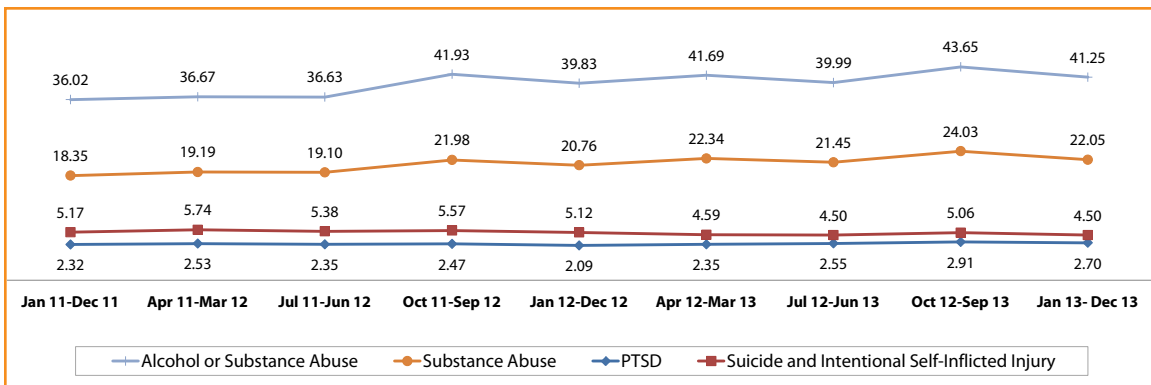


FIGURE 12. ANNUAL PREVALENCE TREND OF OTHER SELECTED BEHAVIORAL HEALTH CONDITIONS PER 1,000 MEDICARE FFS BENEFICIARIES



The charts above reflect annual trending in the prevalence of the eight selected behavioral health conditions among Medicare FFS beneficiaries residing in the Jersey City community.

Depression or Proxy Disorders

Figure 13. Demographics of Depression or Proxy Disorders among Medicare FFS Beneficiaries				
	10/1/11 – 9/30/12		1/1/13 – 12/31/13	
	Number of Beneficiaries	Percent (%)	Number of Beneficiaries	Percent (%)
Race				
• White	2,004	53.81	1,795	53.90
• Black	872	23.42	800	24.02
• Hispanic	538	14.45	428	12.85
• Asian	153	4.11	151	4.53
• Other	157	4.22	156	4.68
Gender				
• Males	1,307	35.10	1,171	35.17
• Females	2,417	64.90	2,159	64.83
Age				
• Below 65	1,271	34.13	1,149	34.50
• 65-74	1,108	29.75	1,027	30.84
• 75-84	864	23.20	740	22.22
• 85 and Above	481	12.92	414	12.43
Total	3,724	100.00	3,330	100.00

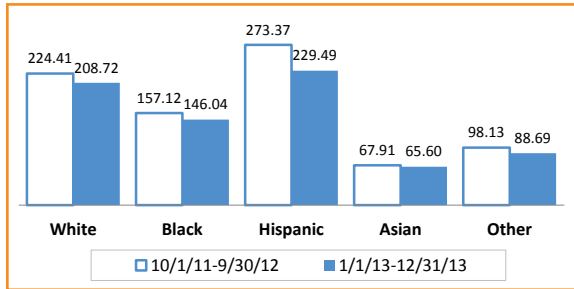
This table displays the number and percentage of Medicare FFS beneficiaries of each race, gender, and age diagnosed with depression or proxy disorders before and after Superstorm Sandy. There were 3,724 beneficiaries residing in the Jersey City community diagnosed with depression or proxy disorders before the storm. This decreased to 3,330 beneficiaries after the storm.

Figure 14. Depression or Proxy Disorders Rate per 1,000 Medicare FFS Beneficiaries by Demographic Group						
	10/1/11 – 9/30/12			1/1/13 – 12/31/13		
	Numerator	Denominator*	Rate per 1,000 Beneficiaries	Numerator	Denominator*	Rate per 1,000 Beneficiaries
Race						
• White	2,004	8,930	224.41	1,795	8,600	208.72
• Black	872	5,550	157.12	800	5,478	146.04
• Hispanic	538	1,968	273.37	428	1,865	229.49
• Asian	153	2,253	67.91	151	2,302	65.60
• Other	157	1,600	98.13	156	1,759	88.69
Gender						
• Males	1,307	8,640	151.27	1,171	8,621	135.83
• Females	2,417	11,661	207.27	2,159	11,383	189.67
Age						
• Below 65	1,271	3,919	324.32	1,149	3,825	300.39
• 65-74	1,108	9,079	122.04	1,027	9,175	111.93
• 75-84	864	5,009	172.49	740	4,797	154.26
• 85 and Above	481	2,294	209.68	414	2,207	187.58
Total	3,724	20,301	183.44	3,330	20,004	166.47

* Total eligible beneficiaries (denominator) computed after adjusting for total enrolled FFS days divided by the total measurement days in the time frame

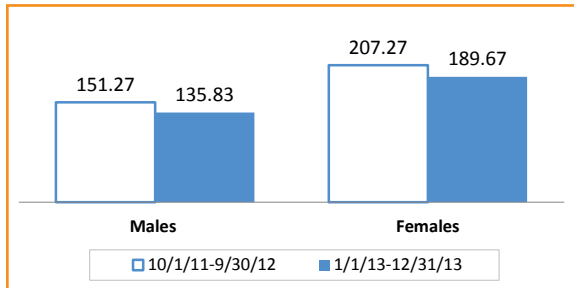
This table displays the rate of Medicare FFS beneficiaries per 1,000 diagnosed with depression or proxy disorders by race, gender, and age both before and after Superstorm Sandy by different demographic groups. The numerator is the number of beneficiaries with a claim for depression or proxy disorders; the denominator is the total number of beneficiaries residing in the community for each group.

FIGURE 15. DEPRESSION OR PROXY DISORDERS RATE BY RACE PER 1,000 MEDICARE FFS BENEFICIARIES



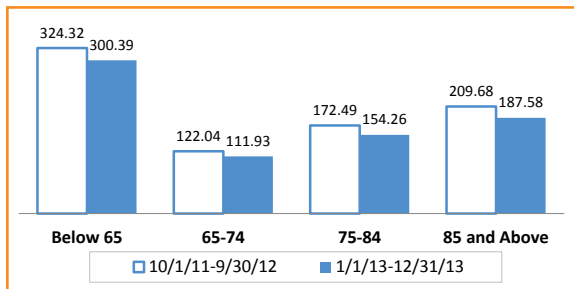
Hispanic Medicare FFS beneficiaries have the highest rate of depression or proxy disorders. In the 12 months prior to Superstorm Sandy, 273.37 per 1,000 Hispanic beneficiaries were diagnosed with depression or proxy disorders. After the storm, this rate decreased to 229.49 per 1,000 beneficiaries.

FIGURE 16. DEPRESSION OR PROXY DISORDERS RATE BY GENDER PER 1,000 MEDICARE FFS BENEFICIARIES



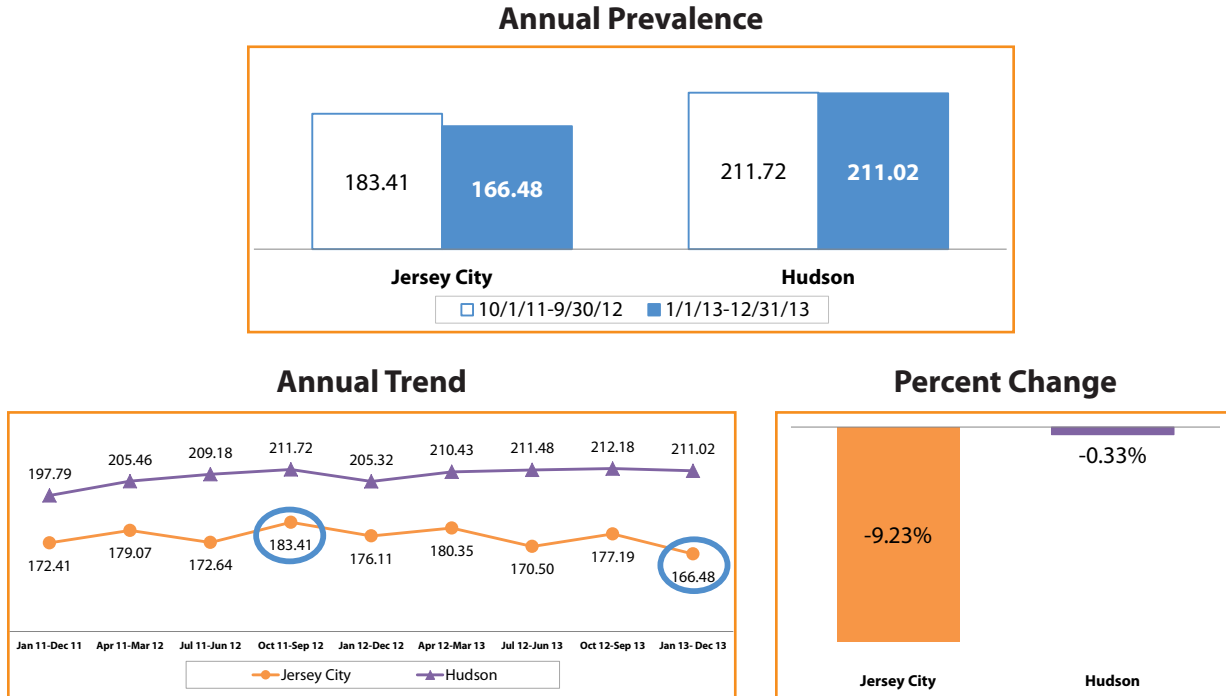
Female Medicare FFS beneficiaries have a higher rate of depression or proxy disorders. In the 12 months prior to Superstorm Sandy, 207.27 per 1,000 female beneficiaries were diagnosed with depression or proxy disorders. After the storm, this rate decreased to 189.67 per 1,000 beneficiaries.

FIGURE 17. DEPRESSION OR PROXY DISORDERS RATE BY AGE GROUP PER 1,000 MEDICARE FFS BENEFICIARIES



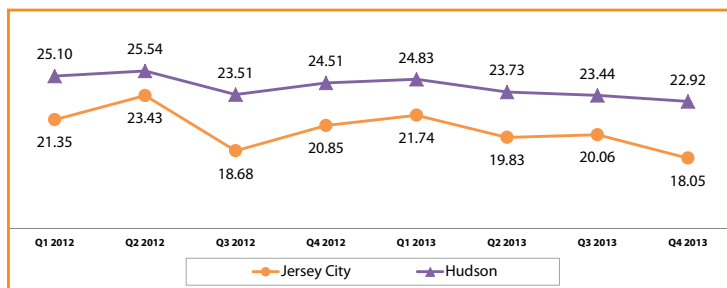
Medicare FFS beneficiaries below the age of 65 have the highest rate of depression or proxy disorders. In the 12 months prior to Superstorm Sandy, 324.32 per 1,000 beneficiaries below the age of 65 were diagnosed with depression or proxy disorders. After the storm, this rate decreased to 300.39 per 1,000 beneficiaries.

FIGURE 18. DEPRESSION OR PROXY DISORDERS PER 1,000 MEDICARE FFS BENEFICIARIES



The prevalence rate of depression or proxy disorders among Medicare FFS beneficiaries residing in the Jersey City community in the 12 months prior to Superstorm Sandy was 183.41 per 1,000 beneficiaries. After the storm, this rate decreased to 166.48 per 1,000 beneficiaries. This change reflects a 9.23% relative decrease, a larger decrease than Hudson County.

FIGURE 19. QUARTERLY NEW INCIDENCE OF DEPRESSION OR PROXY DISORDERS* PER 1,000 MEDICARE FFS BENEFICIARIES



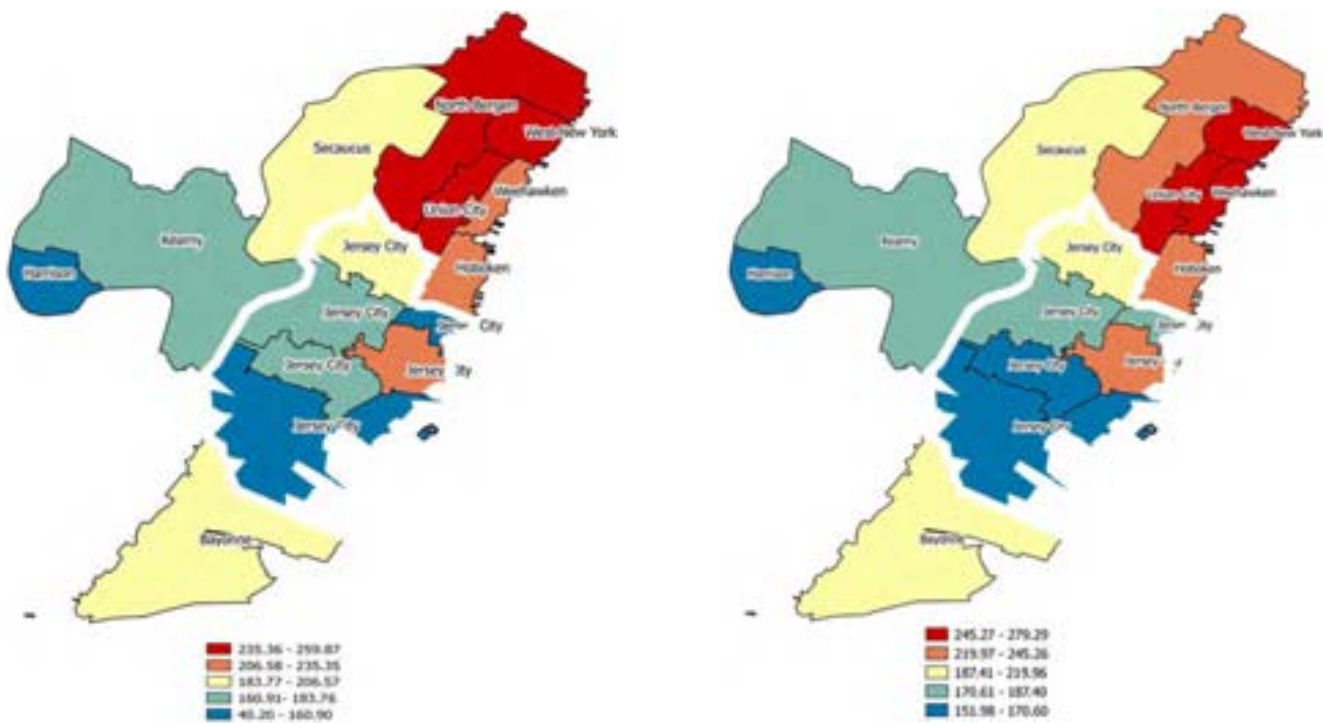
This chart reflects trending of quarterly new incidence of depression or proxy disorders among Medicare FFS beneficiaries residing in the Jersey City community.

* Quarterly new incidences of conditions that were non-existent (not reported) in the last 12 months.

FIGURE 21. HUDSON COUNTY PREVALENCE OF DEPRESSION OR PROXY DISORDERS* PER 1,000 MEDICARE FFS BENEFICIARIES

October 1, 2011 – September 30, 2012

January 1, 2013 – December 31, 2013

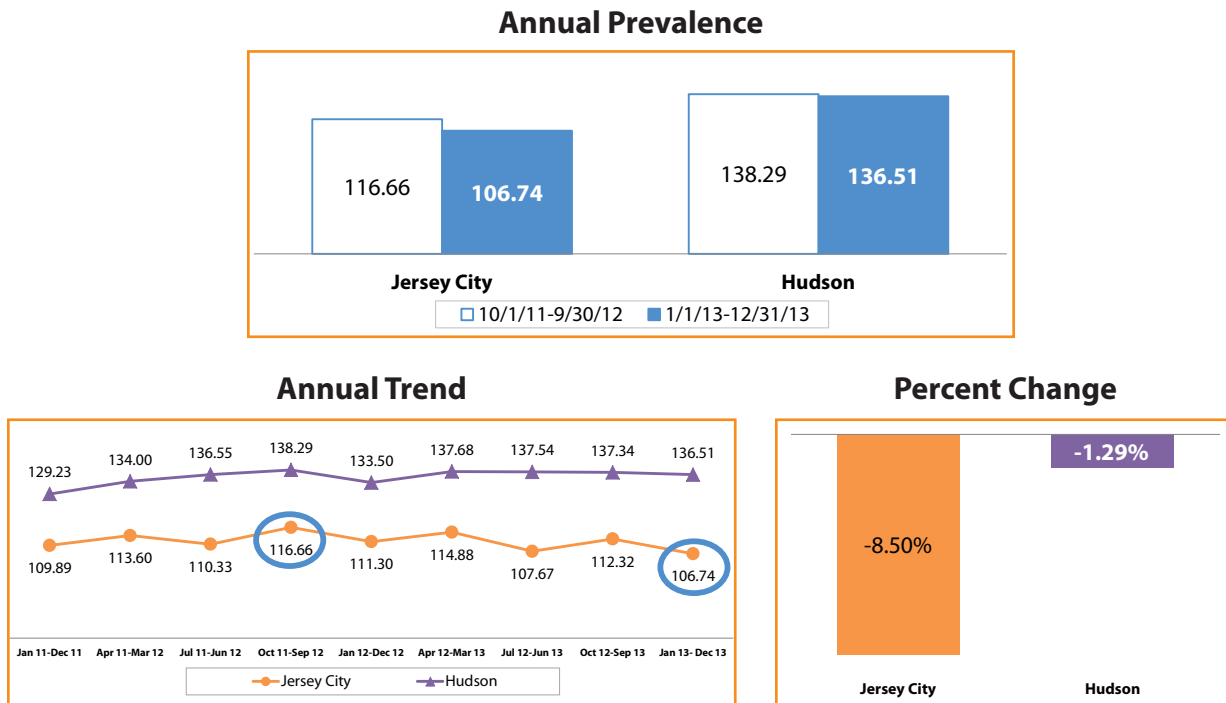


The color-coded map of Hudson County depicts regional variation of prevalence of depression or proxy disorders from high (red) to low (blue) before and after Superstorm Sandy.

* Mapped using ZIP codes; may not display all the city names located within the ZIP code.

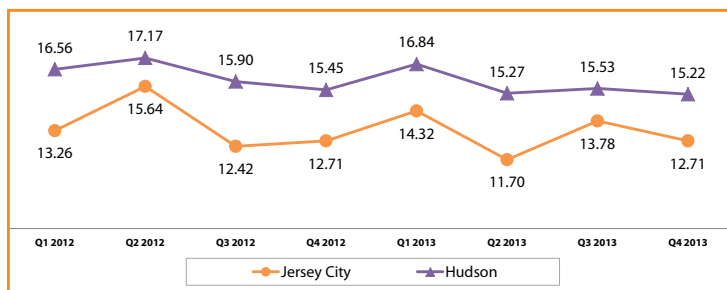
Depression

FIGURE 22. DEPRESSION PER 1,000 MEDICARE FFS BENEFICIARIES



The prevalence rate of depression among Medicare FFS beneficiaries residing in the Jersey City community in the 12 months prior to Superstorm Sandy was 116.66 per 1,000 beneficiaries. After the storm, this rate decreased to 106.74 per 1,000 beneficiaries. This change reflects an 8.50% relative decrease, a larger decrease than Hudson County.

FIGURE 23. QUARTERLY NEW INCIDENCE OF DEPRESSION* PER 1,000 MEDICARE FFS BENEFICIARIES

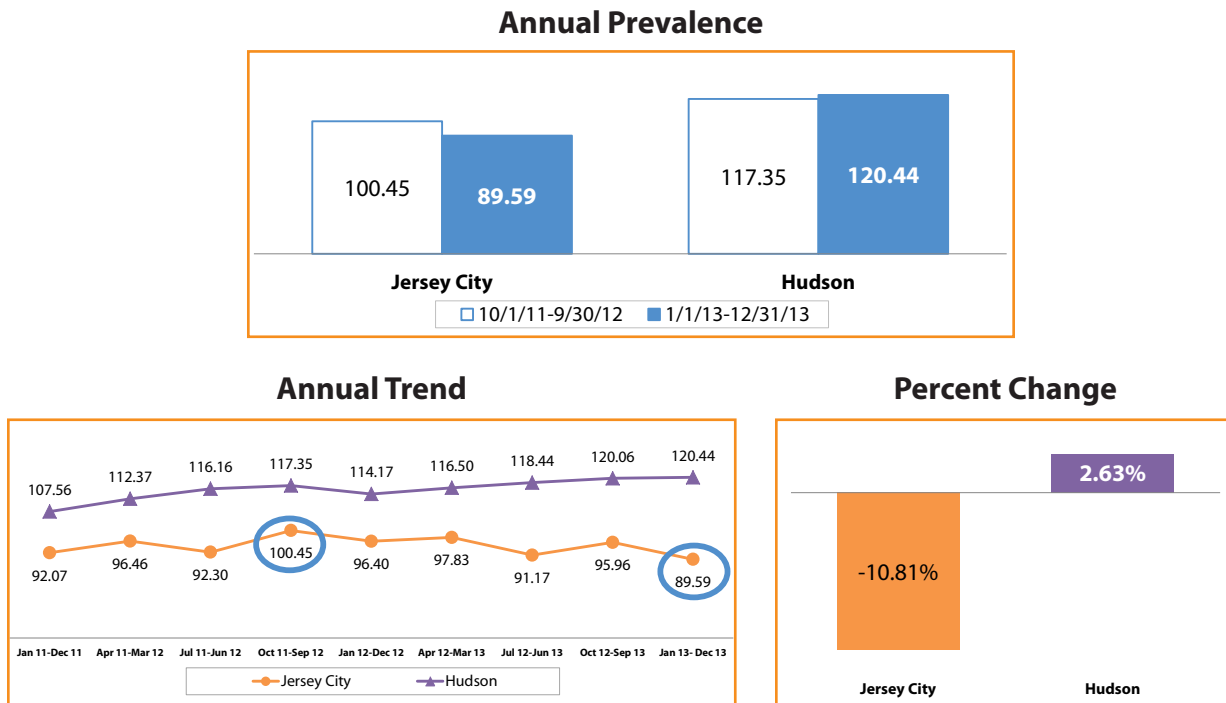


This chart reflects trending of quarterly new incidence of depression among Medicare FFS beneficiaries residing in the Jersey City community.

* Quarterly new incidences of conditions that were non-existent (not reported) in the last 12 months.

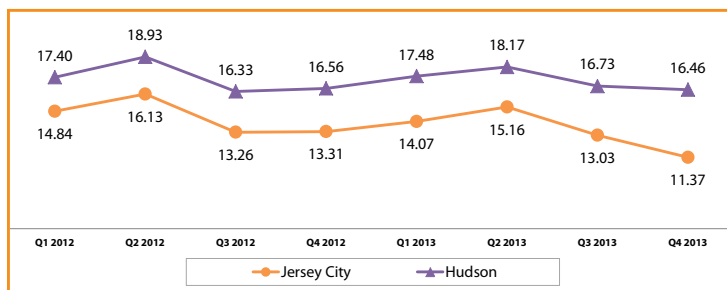
Anxiety Disorders

FIGURE 24. ANXIETY DISORDERS PER 1,000 MEDICARE FFS BENEFICIARIES



The prevalence rate of anxiety disorders among Medicare FFS beneficiaries residing in the Jersey City community in the 12 months prior to Superstorm Sandy was 100.45 per 1,000 beneficiaries. After the storm, this rate decreased to 89.59 per 1,000 beneficiaries. This change reflects a 10.81% relative decrease.

FIGURE 25. QUARTERLY NEW INCIDENCE OF ANXIETY DISORDERS* PER 1,000 MEDICARE FFS BENEFICIARIES

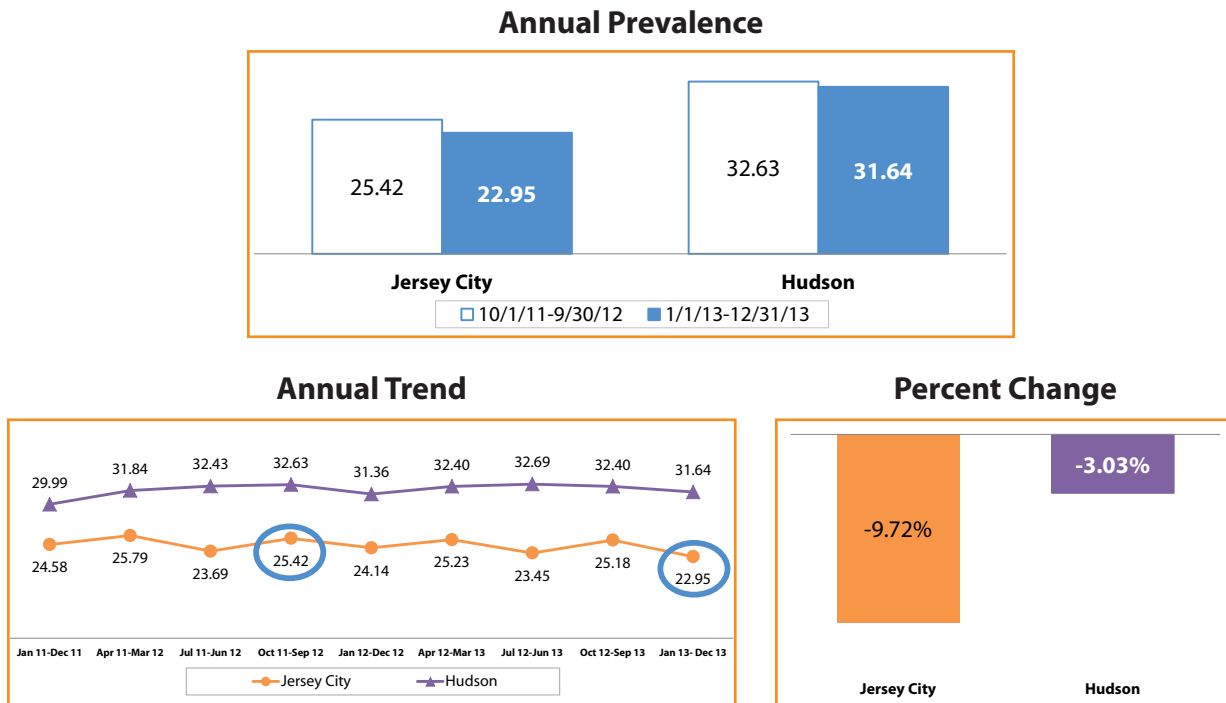


This chart reflects trending of quarterly new incidence of anxiety disorders among Medicare FFS beneficiaries residing in the Jersey City community.

* Quarterly new incidences of conditions that were non-existent (not reported) in the last 12 months.

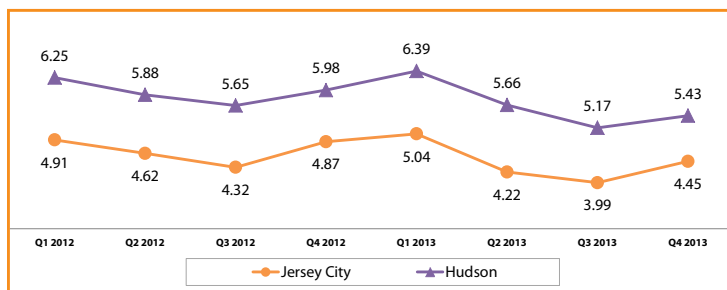
Adjustment Disorders

FIGURE 26. ADJUSTMENT DISORDERS PER 1,000 MEDICARE FFS BENEFICIARIES



The prevalence rate of adjustment disorders among Medicare FFS beneficiaries residing in the Jersey City community in the 12 months prior to Superstorm Sandy was 25.42 per 1,000 beneficiaries. After the storm, this rate decreased to 22.95 per 1,000 beneficiaries. This change reflects a 9.72% relative decrease, a larger decrease than Hudson County.

FIGURE 27. QUARTERLY NEW INCIDENCE OF ADJUSTMENT DISORDERS* PER 1,000 MEDICARE FFS BENEFICIARIES

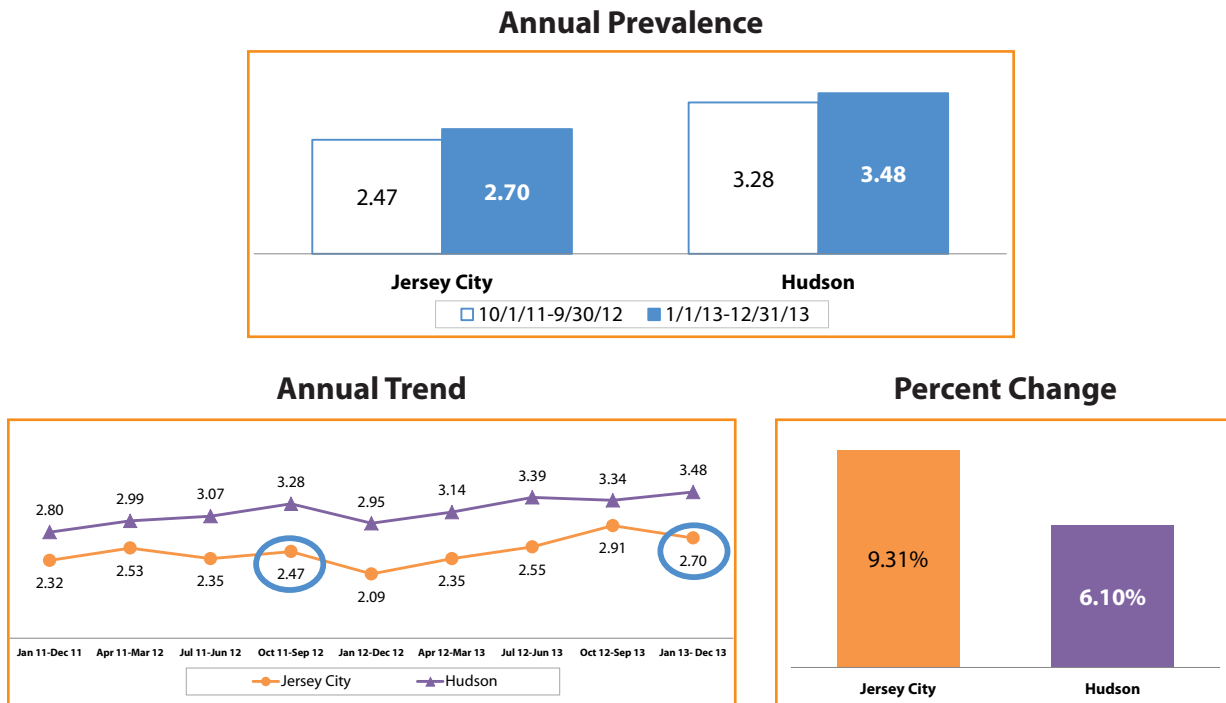


This chart reflects trending of quarterly new incidence of adjustment disorders among Medicare FFS beneficiaries residing in the Jersey City community.

* Quarterly new incidences of conditions that were non-existent (not reported) in the last 12 months.

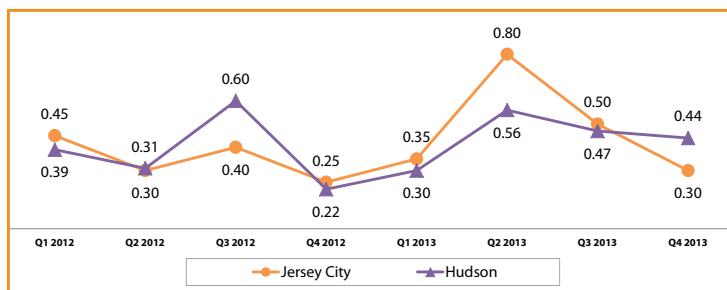
Post-Traumatic Stress Disorder (PTSD)

FIGURE 28. PTSD PER 1,000 MEDICARE FFS BENEFICIARIES



The prevalence rate of PTSD among Medicare FFS beneficiaries residing in the Jersey City community in the 12 months prior to Superstorm Sandy was 2.47 per 1,000 beneficiaries. After the storm, this rate increased to 2.70 per 1,000 beneficiaries. This change reflects a 9.31% relative increase, a larger increase than Hudson County.

FIGURE 29. QUARTERLY NEW INCIDENCE OF PTSD* PER 1,000 MEDICARE FFS BENEFICIARIES

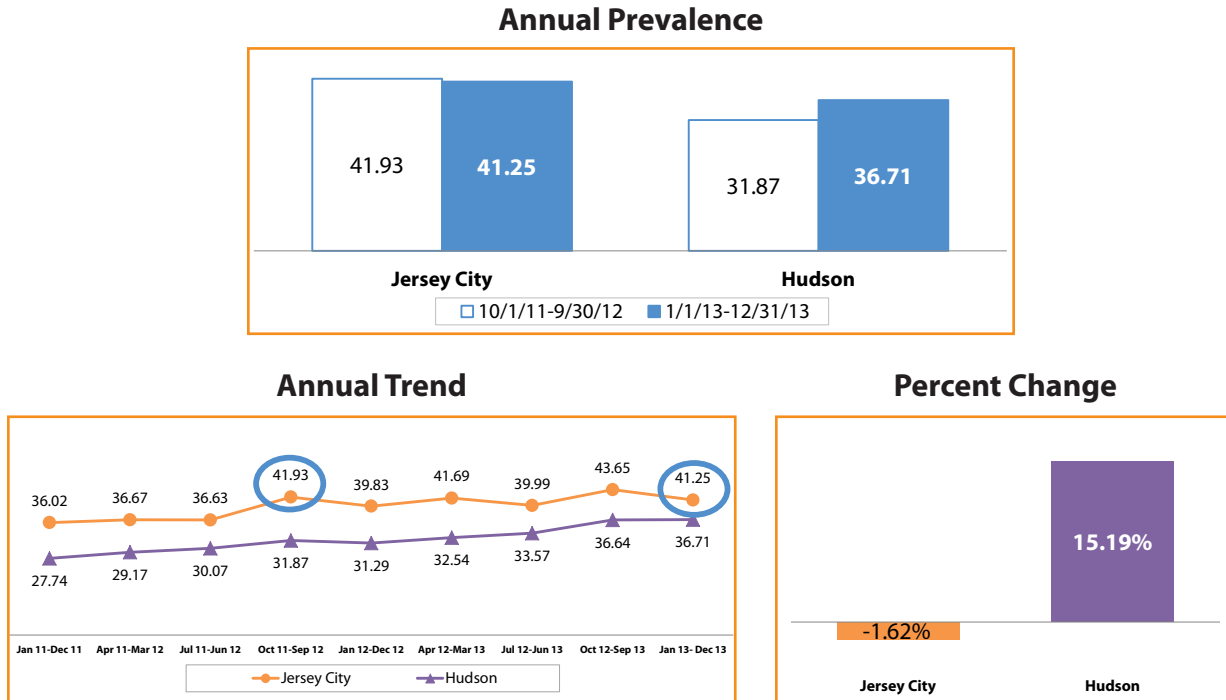


This chart reflects trending of quarterly new incidence of PTSD among Medicare FFS beneficiaries residing in the Jersey City community.

* Quarterly new incidences of conditions that were non-existent (not reported) in the last 12 months.

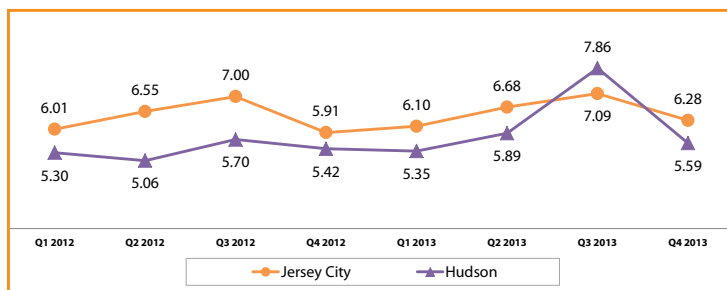
Alcohol or Substance Abuse

FIGURE 30. ALCOHOL OR SUBSTANCE ABUSE PER 1,000 MEDICARE FFS BENEFICIARIES



The prevalence rate of alcohol or substance abuse among Medicare FFS beneficiaries residing in the Jersey City community in the 12 months prior to Superstorm Sandy was 41.93 per 1,000 beneficiaries. After the storm, this rate decreased to 41.25 per 1,000 beneficiaries, which was higher than the county rate. This change reflects a 1.62% relative decrease.

FIGURE 31. QUARTERLY NEW INCIDENCE OF ALCOHOL OR SUBSTANCE ABUSE* PER 1,000 MEDICARE FFS BENEFICIARIES

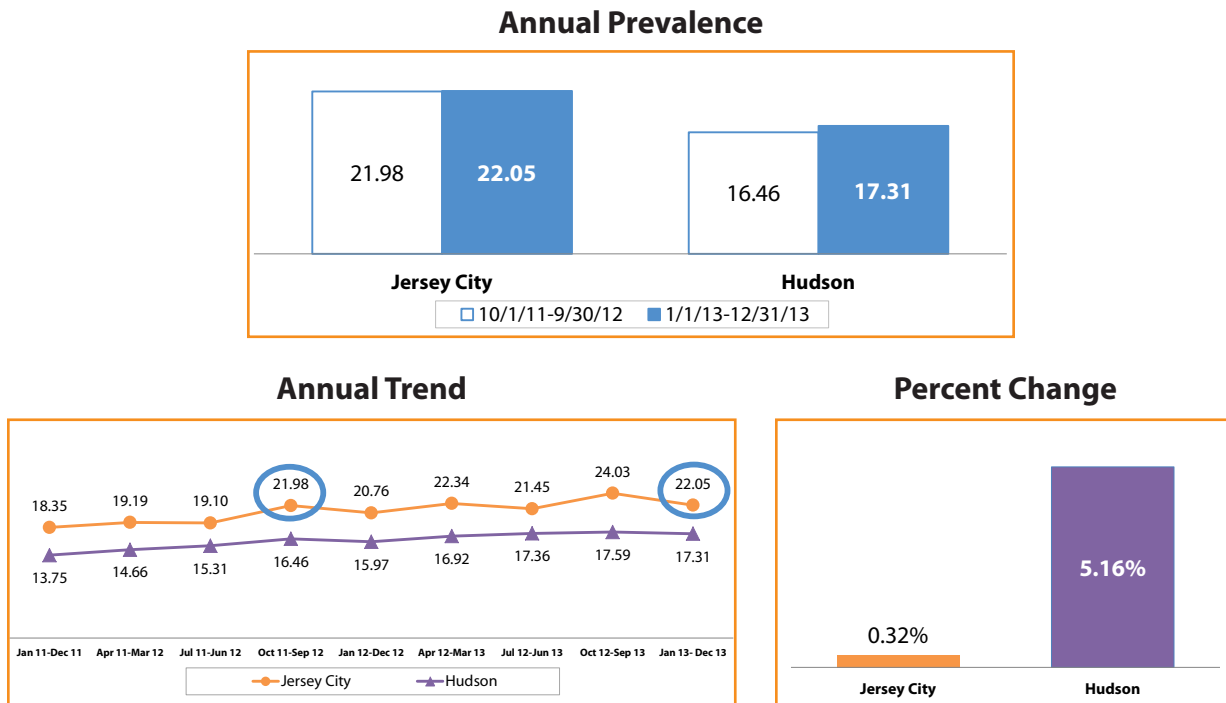


This chart reflects trending of quarterly new incidence of alcohol or substance abuse among Medicare FFS beneficiaries residing in the Jersey City community.

* Quarterly new incidences of conditions that were non-existent (not reported) in the last 12 months.

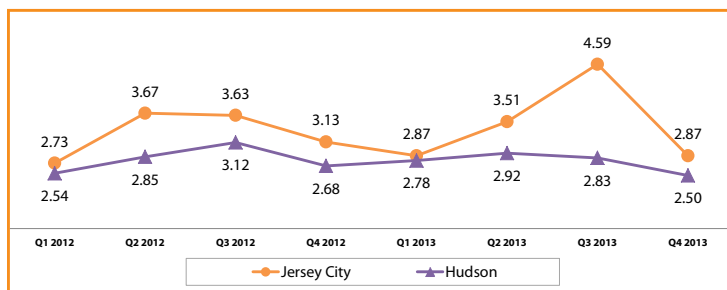
Substance Abuse Alone

FIGURE 32. SUBSTANCE ABUSE ALONE PER 1,000 MEDICARE FFS BENEFICIARIES



The prevalence rate of substance abuse alone among Medicare FFS beneficiaries residing in the Jersey City community in the 12 months prior to Superstorm Sandy was 21.98 per 1,000 beneficiaries. After the storm, this rate increased to 22.05 per 1,000 beneficiaries, which was higher than the county rate. This change reflects a 0.32% relative increase.

FIGURE 33. QUARTERLY NEW INCIDENCE OF SUBSTANCE ABUSE ALONE* PER 1,000 MEDICARE FFS BENEFICIARIES

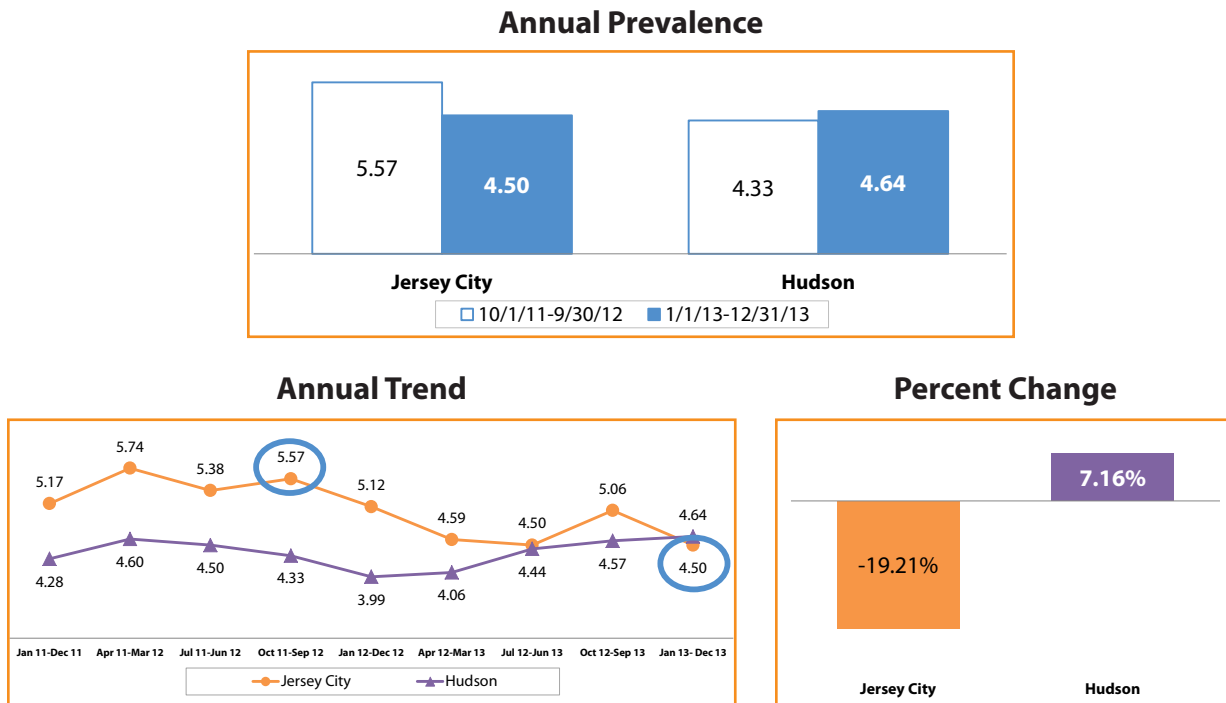


This chart reflects trending of quarterly new incidence of substance abuse alone among Medicare FFS beneficiaries residing in the Jersey City community.

* Quarterly new incidences of conditions that were non-existent (not reported) in the last 12 months.

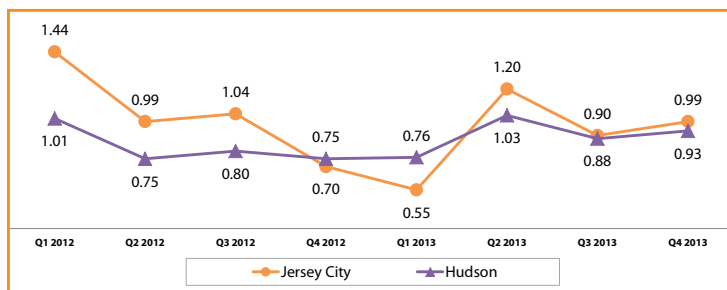
Suicide and Intentional Self-Inflicted Injury

FIGURE 34. SUICIDE AND INTENTIONAL SELF-INFLICTED INJURY PER 1,000 MEDICARE FFS BENEFICIARIES



The prevalence rate of suicide and intentional self-inflicted injuries among Medicare FFS beneficiaries residing in the Jersey City community in the 12 months prior to Superstorm Sandy was 5.57 per 1,000 beneficiaries. After the storm, this rate decreased to 4.50 per 1,000 beneficiaries, reflecting a 19.21% relative decrease.

FIGURE 35. QUARTERLY NEW INCIDENCE OF SUICIDE AND INTENTIONAL SELF-INFLICTED INJURY* PER 1,000 MEDICARE FFS BENEFICIARIES



This chart reflects trending of quarterly new incidence of suicide and intentional self-inflicted injuries among Medicare FFS beneficiaries residing in the Jersey City community.

* Quarterly new incidences of conditions that were non-existent (not reported) in the last 12 months.

RISK FACTORS FOR DEPRESSION OR PROXY DISORDERS

To identify beneficiaries at risk of developing depression or proxy disorders, HQSI conducted a literature review on the potential risk factors for depression or proxy disorders. Previous studies suggested that psychosocial factors, biological factors, deteriorating physical functioning, and medication side effects could increase the risk of depression or proxy disorders.

Based on the literature review and data analysis using factors available through Medicare claims data, the top five risk factors for depression or proxy disorders were identified as: Alzheimer’s disease and related disorders or senile dementia, sleep disturbance, alcohol or substance abuse or tobacco use, hip/pelvic fractures, and amputations (see Appendix B).

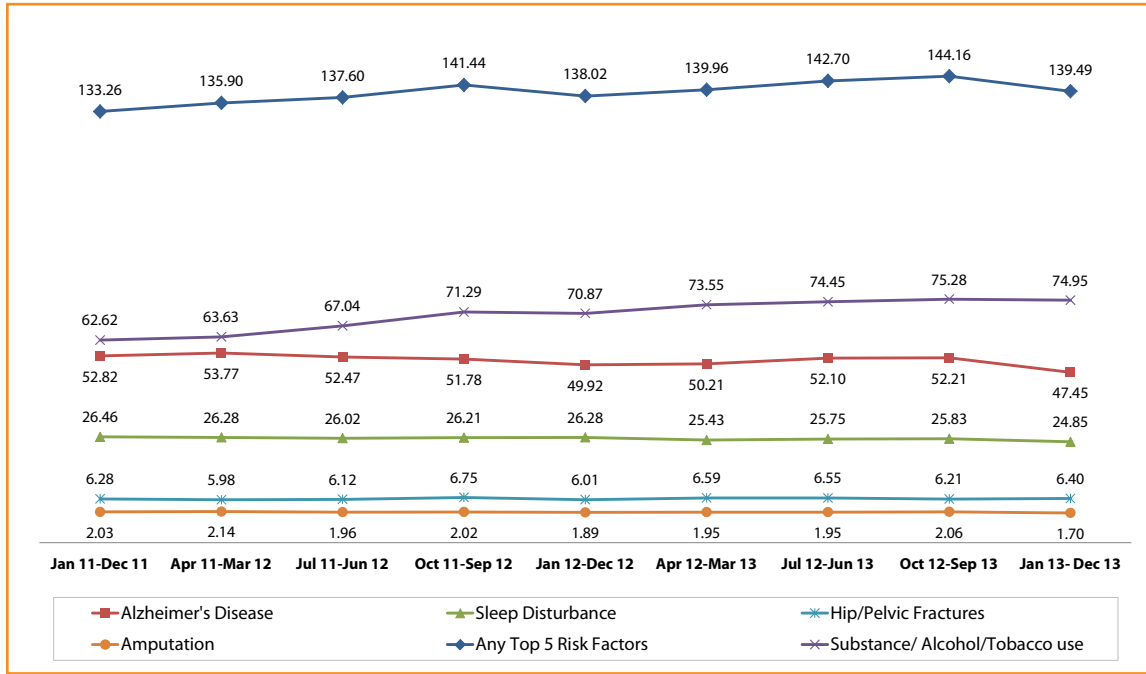
For Medicare FFS beneficiaries residing in the community who were diagnosed with these risk factor conditions prior to being diagnosed with depression or proxy disorders, these conditions may have contributed to the risk of developing depression or proxy disorders. The following figures show the prevalence rates for these five conditions in the 12 months before and after Superstorm Sandy.

Summary

Figure 36. Percent Change of Prevalence of the Top Five Risk Factors of Depression or Proxy Disorders per 1,000 Medicare FFS Beneficiaries						
	Jersey City			Hudson		
	10/1/11 – 9/30/12	1/1/13 – 12/31/13	% Change	10/1/11 – 9/30/12	1/1/13 – 12/31/13	% Change
Any of the Top Five Risk Factors for Depression or Proxy Disorders	141.44	139.49	-1.38	132.83	136.15	2.50
• Substance or Alcohol Abuse or Tobacco Use	71.29	74.95	5.13	65.04	72.73	11.82
• Alzheimer’s Disease and related disorders or Senile Dementia	51.78	47.45	-8.36	49.83	45.76	-8.17
• Sleep Disturbance	26.21	24.85	-5.19	25.08	24.52	-2.23
• Hip/Pelvic Fractures	6.75	6.40	-5.19	6.46	7.11	10.06
• Amputations	2.02	1.70	-15.84	1.34	1.17	-12.69

The Jersey City community experienced a larger decrease in Alzheimer’s disease and related disorders or senile dementia, sleep disturbance, and amputations than Hudson County.

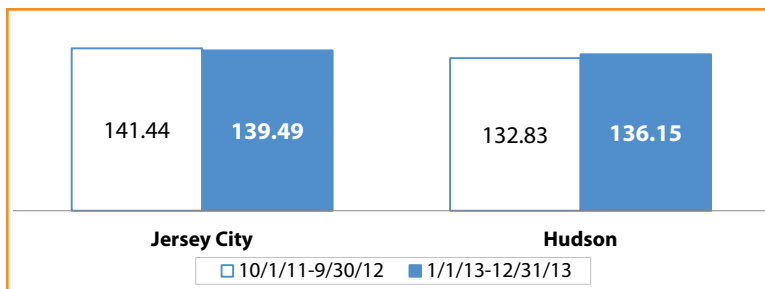
FIGURE 37. ANNUAL PREVALENCE TREND FOR RISK FACTORS OF DEPRESSION OR PROXY DISORDERS PER 1,000 MEDICARE FFS BENEFICIARIES



The chart above reflects annual trending in the prevalence of any of the top five risk factors for depression or proxy disorders among Medicare FFS beneficiaries residing in the Jersey City community.

Any of the Top Five Risk Factors for Depression or Proxy Disorders

FIGURE 38. ANNUAL PREVALENCE OF ANY OF THE TOP FIVE RISK FACTORS FOR DEPRESSION OR PROXY DISORDERS PER 1,000 MEDICARE FFS BENEFICIARIES

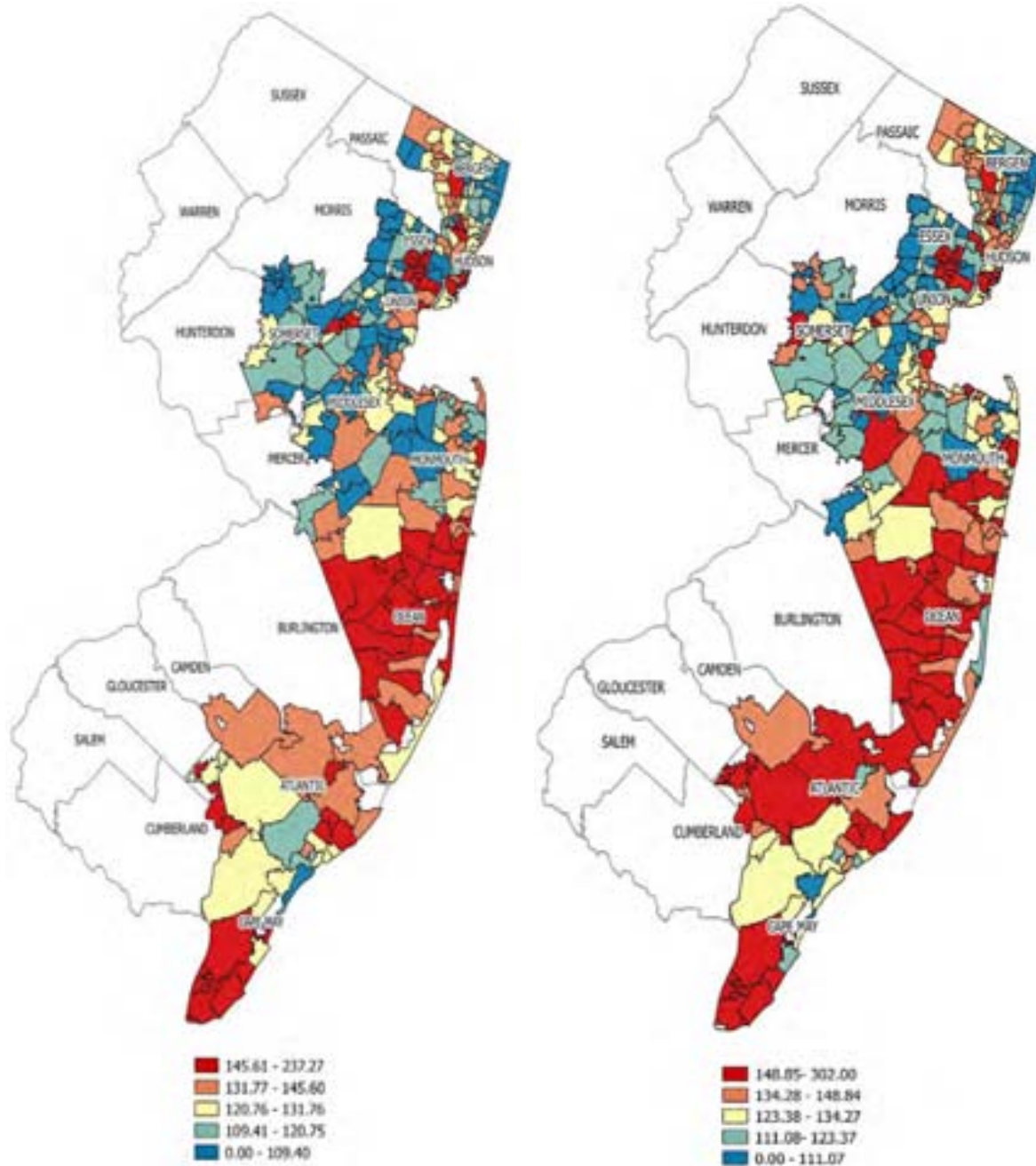


The prevalence rate of Medicare FFS beneficiaries residing in the Jersey City community with any of the top five risk factors for depression or proxy disorders in the 12 months prior to Superstorm Sandy was 141.44 per 1,000 beneficiaries. After the storm, the rate decreased to 139.49 per 1,000 beneficiaries, which was higher than the county rate.

FIGURE 39. PREVALENCE OF ANY OF THE TOP FIVE RISK FACTORS FOR DEPRESSION OR PROXY DISORDERS* PER 1,000 MEDICARE FFS BENEFICIARIES IN 10 COUNTIES

October 1, 2011 – September 30, 2012

January 1, 2013 – December 31, 2013



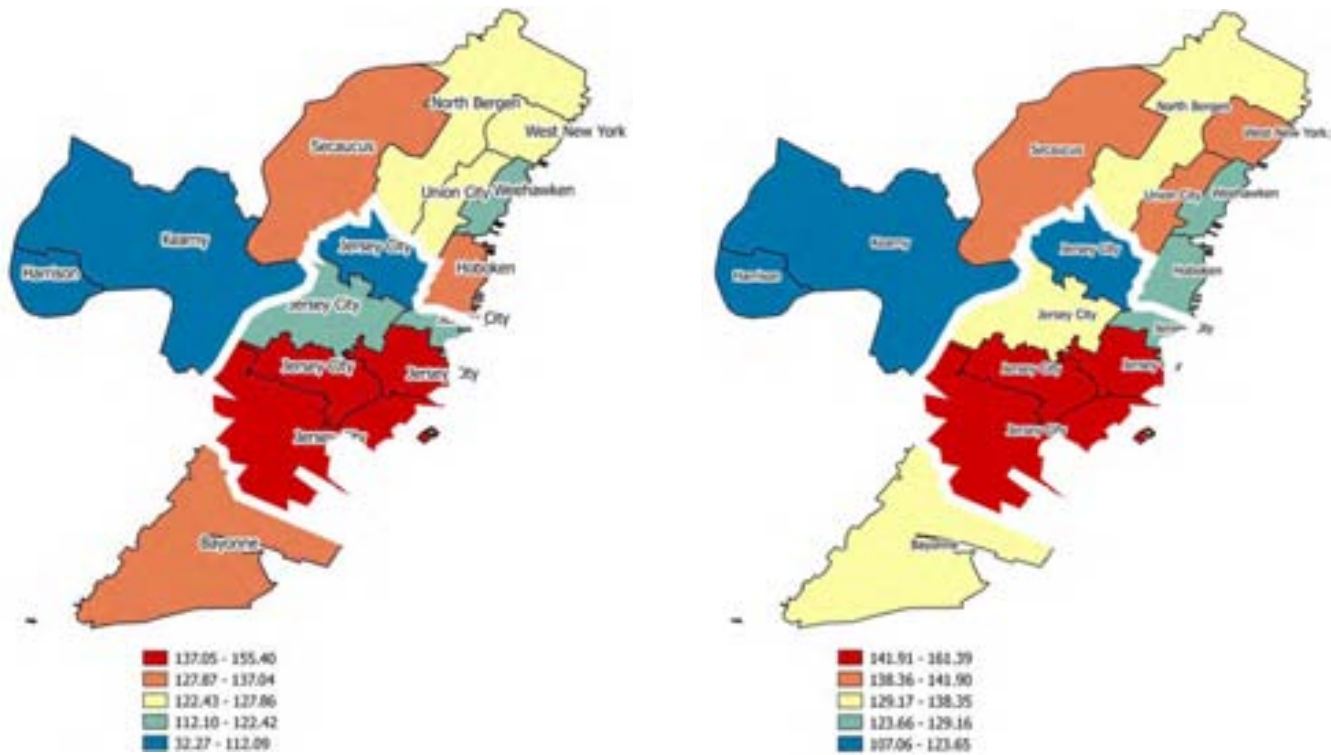
The color-coded map of New Jersey depicts prevalence of any of the top five risk factors from high (red) to low (blue) in the 10 FEMA-declared disaster counties before and after Superstorm Sandy.

* Mapped using ZIP codes of the 10 counties.

FIGURE 40. HUDSON COUNTY PREVALENCE OF ANY OF THE TOP FIVE RISK FACTORS FOR DEPRESSION OR PROXY DISORDERS* PER 1,000 MEDICARE FFS BENEFICIARIES

October 1, 2011 – September 30, 2012

January 1, 2013 – December 31, 2013

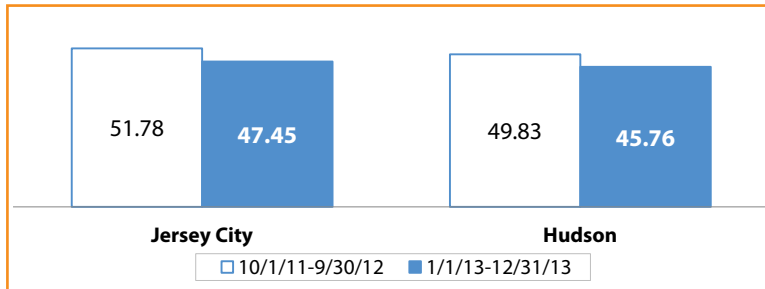


The color-coded map of Hudson County depicts regional variation of prevalence of any of the top five risk factors from high (red) to low (blue) before and after Superstorm Sandy.

* Mapped using ZIP codes; may not display all the city names located within the ZIP code.

Alzheimer’s Disease and Related Disorders or Senile Dementia

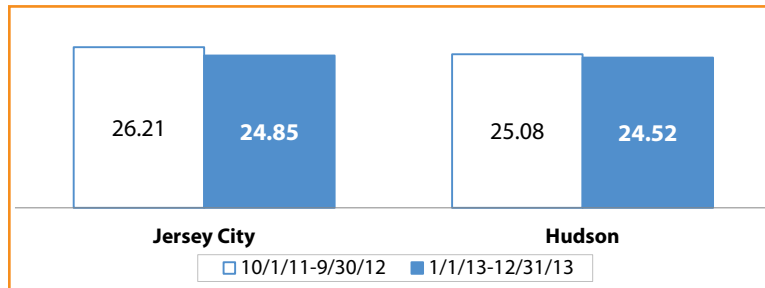
FIGURE 41. ANNUAL PREVALENCE OF ALZHEIMER’S DISEASE AND RELATED DISORDERS OR SENILE DEMENTIA PER 1,000 MEDICARE FFS BENEFICIARIES



The prevalence rate of Medicare FFS beneficiaries residing in the Jersey City community with Alzheimer’s disease and related disorders or senile dementia in the 12 months prior to Superstorm Sandy was 51.78 per 1,000 beneficiaries. After the storm, the rate decreased to 47.45 per 1,000 beneficiaries, which was higher than the county rate.

Sleep Disturbance

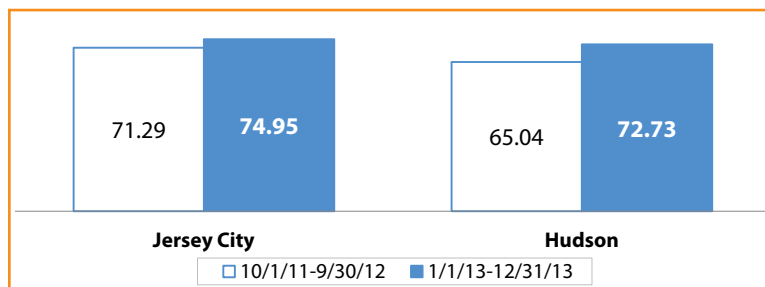
FIGURE 42. ANNUAL PREVALENCE OF SLEEP DISTURBANCE PER 1,000 MEDICARE FFS BENEFICIARIES



The prevalence rate of Medicare FFS beneficiaries residing in the Jersey City community with sleep disturbance in the 12 months prior to Superstorm Sandy was 26.21 per 1,000 beneficiaries. After the storm, the rate decreased to 24.85 per 1,000 beneficiaries, which was higher than the county rate.

Substance or Alcohol Abuse or Tobacco Use

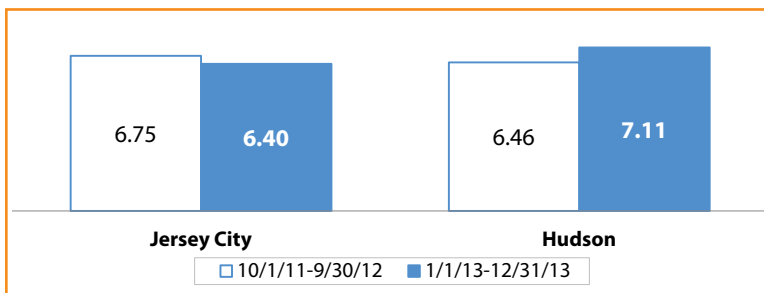
FIGURE 43. ANNUAL PREVALENCE OF SUBSTANCE OR ALCOHOL ABUSE OR TOBACCO USE PER 1,000 MEDICARE FFS BENEFICIARIES



The prevalence rate of Medicare FFS beneficiaries residing in the Jersey City community with substance or alcohol abuse or tobacco use in the 12 months prior to Superstorm Sandy was 71.29 per 1,000 beneficiaries. After the storm, the rate increased to 74.95 per 1,000 beneficiaries, which was higher than the county rate.

Hip/Pelvic Fractures

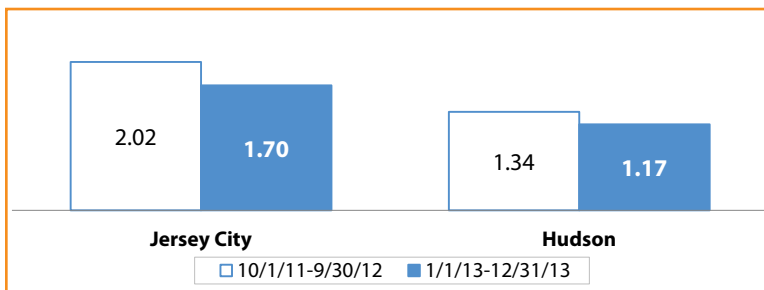
FIGURE 44. ANNUAL PREVALENCE OF HIP/PELVIC FRACTURES PER 1,000 MEDICARE FFS BENEFICIARIES



The prevalence rate of Medicare FFS beneficiaries residing in the Jersey City community with hip/pelvic fractures in the 12 months prior to Superstorm Sandy was 6.75 per 1,000 beneficiaries. After the storm, the rate decreased to 6.40 per 1,000 beneficiaries.

Amputations

FIGURE 45. ANNUAL PREVALENCE OF AMPUTATIONS PER 1,000 MEDICARE FFS BENEFICIARIES



The prevalence rate of Medicare FFS beneficiaries residing in the Jersey City community with amputations in the 12 months prior to Superstorm Sandy was 2.02 per 1,000 beneficiaries. After the storm, the rate decreased to 1.70 per 1,000 beneficiaries, which was higher than the county rate.

UTILIZATION OF OUTPATIENT BEHAVIORAL HEALTH SERVICES

Assessments*

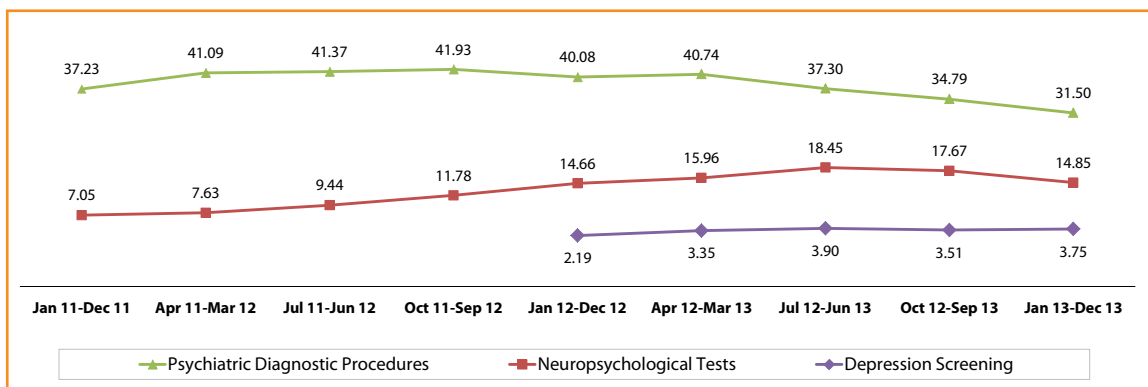
Summary

Figure 46. Percent Change of Behavioral Health Service Utilization – Assessments per 1,000 Medicare FFS Beneficiaries						
	Jersey City			Hudson		
	10/1/11 – 9/30/12	1/1/13 – 12/31/13	% Change	10/1/11 – 9/30/12	1/1/13 – 12/31/13	% Change
Annual Depression Screening*	2.19	3.75	71.23	2.83	9.95	251.59
Psychiatric Diagnostic Procedures	41.93	31.50	-24.87	50.84	45.13	-11.23
Neuropsychological Tests	11.78	14.85	26.06	16.90	17.34	2.60

* Depression screening comparison time frames are different (January 1, 2012 – December 31, 2012 vs. October 1, 2012 – September 30, 2013)

Annual depression screening in the Jersey City community increased from 2.19 per 1,000 Medicare FFS beneficiaries to 3.75 per 1,000 beneficiaries. Neuropsychological tests also increased.

FIGURE 47. ANNUAL UTILIZATION TREND OF BEHAVIORAL HEALTH ASSESSMENT SERVICES PER 1,000 MEDICARE FFS BENEFICIARIES



The chart above reflects annual trending in the utilization of behavioral health assessment services among Medicare FFS beneficiaries residing in the Jersey City community.

Depression Screening

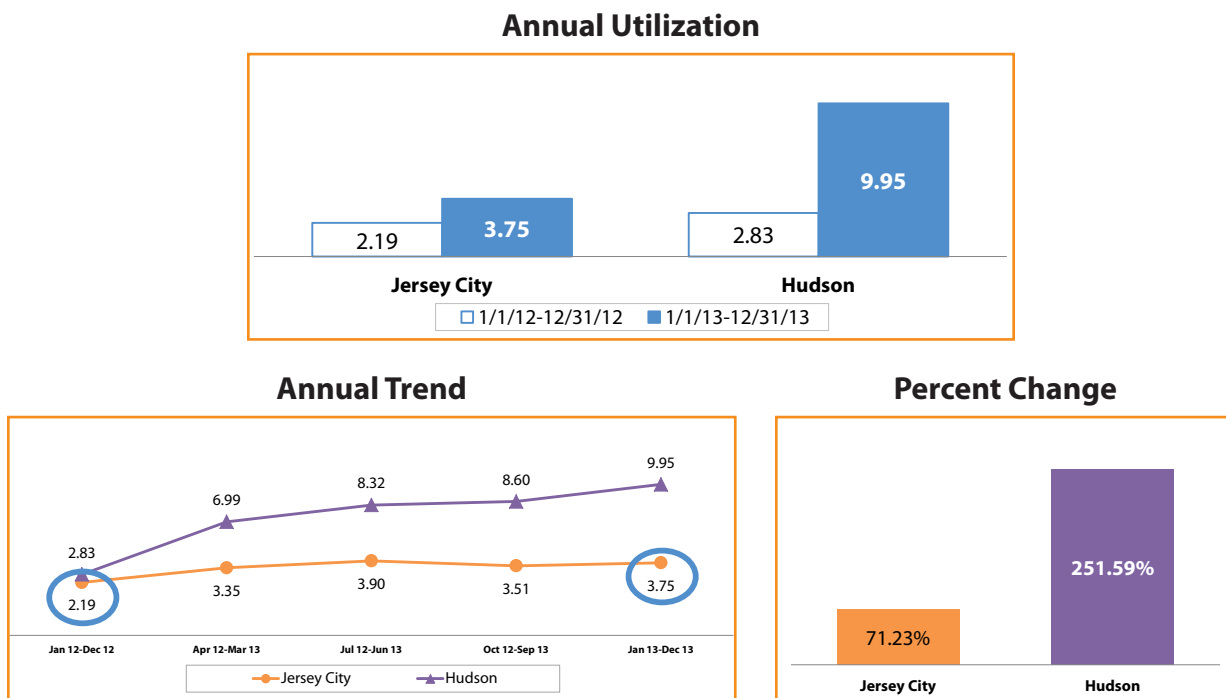
One of the long-term goals of this project is to increase the awareness and use of Medicare-covered depression screening among at-risk Medicare FFS beneficiaries residing in the 10 counties during Superstorm Sandy.

*The utilization rates for Diagnostic Psychological Tests and Health and Behavior Assessment/Intervention are not provided in this profile due to low rates.

Beginning October 2011, depression screening became a Medicare-covered service. According to the CMS Screening for Depression Booklet,⁷ Medicare Part B covers an annual screening for depression of 15 minutes in length for beneficiaries in primary care settings when staff-assisted depression care supports are in place to assure accurate diagnosis, effective treatment, and follow-up. The first quarter of data in this profile for depression screening starts on January 2012 since there were only 14 claims filed for depression screening in the last quarter of 2011 in all 10 counties.

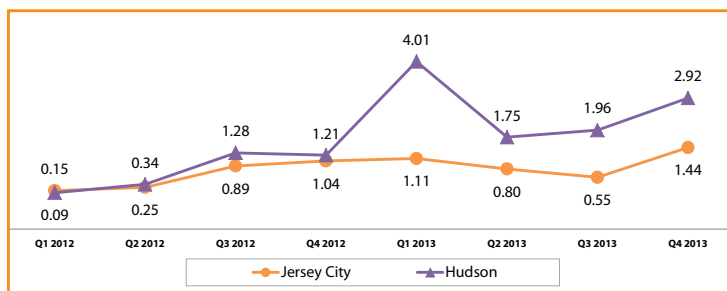
The depression screening utilization rates have been low in all 10 communities.

FIGURE 48. DEPRESSION SCREENING PER 1,000 MEDICARE FFS BENEFICIARIES



The rate of depression screening in the Jersey City community for calendar year 2012 was 2.19 per 1,000 Medicare FFS beneficiaries. After the storm, this rate increased to 3.75 per 1,000 beneficiaries, reflecting a 71.23% relative increase.

FIGURE 49. QUARTERLY DEPRESSION SCREENING PER 1,000 MEDICARE FFS BENEFICIARIES



This chart reflects trending of quarterly utilization of depression screening among Medicare FFS beneficiaries residing in the Jersey City community.

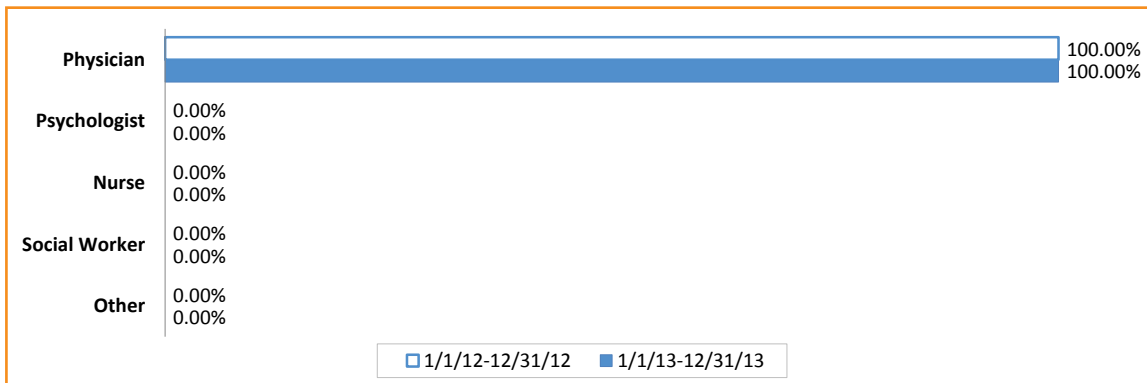
Figure 50. Provider Location for Depression Screening* Claims for Medicare FFS Beneficiaries Residing in Jersey City Community

Providers	1/1/12-12/31/12		1/1/13-12/31/13	
	Number of Claims N=46	Percent	Number of Claims N=81	Percent
Outside of New Jersey	4	8.7	11	13.6
New Jersey	42	91.3	70	86.4
• Hudson County	0	0.0	34	42.0
– Jersey City Community	0	0.0	10	12.3
• Other Counties	42	91.3	36	44.4

* Depression screening is a one time benefit per year. Depression screening comparison time frames are different (January 1, 2012 – December 31, 2012 vs. October 1, 2012 – September 30, 2013)

After Superstorm Sandy, of the 81 claims filed for a depression screening for beneficiaries residing in the Jersey City community, 13.6% were filed outside of New Jersey and 86.4% were filed within New Jersey. Of those filed within New Jersey, 42.0% were filed within Hudson County, 12.3% were filed within the Jersey City community, and 44.4% were filed in other counties.

FIGURE 51. DEPRESSION SCREENING* CLAIMS FOR MEDICARE FFS BENEFICIARIES



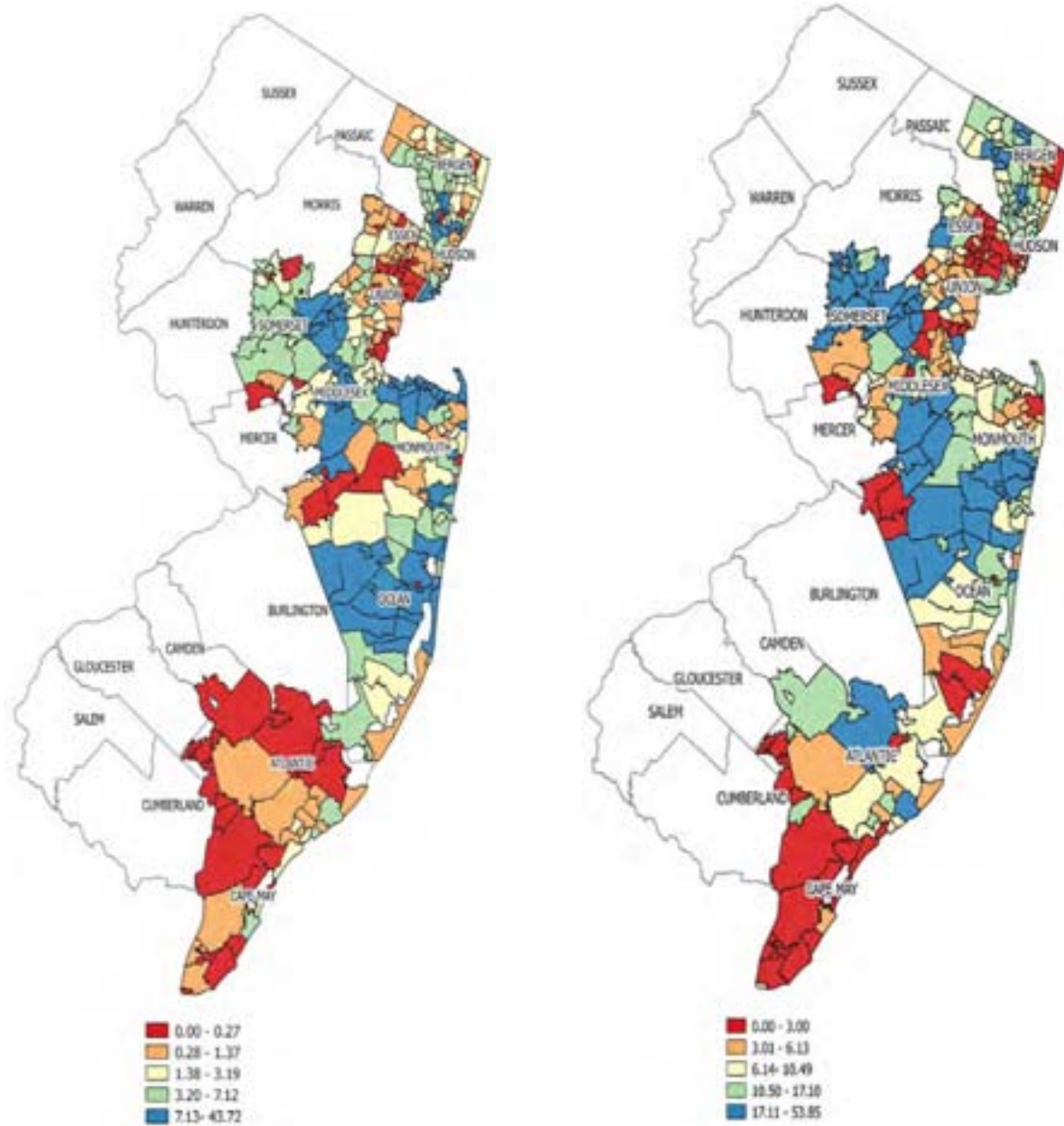
* Depression screening is a one time benefit per year

Both before and after Superstorm Sandy, all depression screening claims were filed by physicians.

**FIGURE 52. DEPRESSION SCREENING*
PER 1,000 MEDICARE FFS BENEFICIARIES IN 10 COUNTIES**

January 1, 2012 – December 31, 2012

January 1, 2013 – December 31, 2013



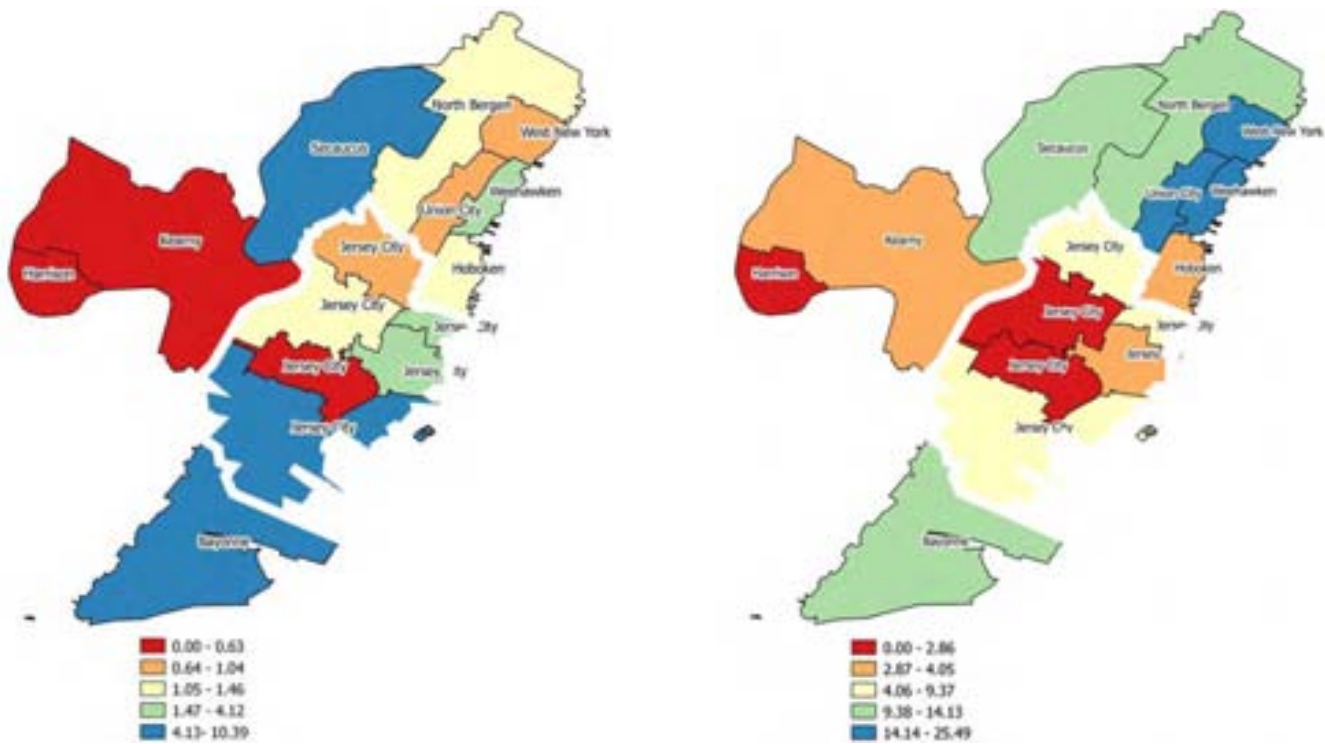
The color-coded map of New Jersey depicts the use of depression screening from low (red) to high (blue) in the 10 FEMA-declared disaster counties before and after Superstorm Sandy.

* Mapped using ZIP codes of the 10 counties.

**FIGURE 53. HUDSON COUNTY DEPRESSION SCREENING*
PER 1,000 MEDICARE FFS BENEFICIARIES**

January 1, 2012 – December 31, 2012

January 1, 2013 – December 31, 2013



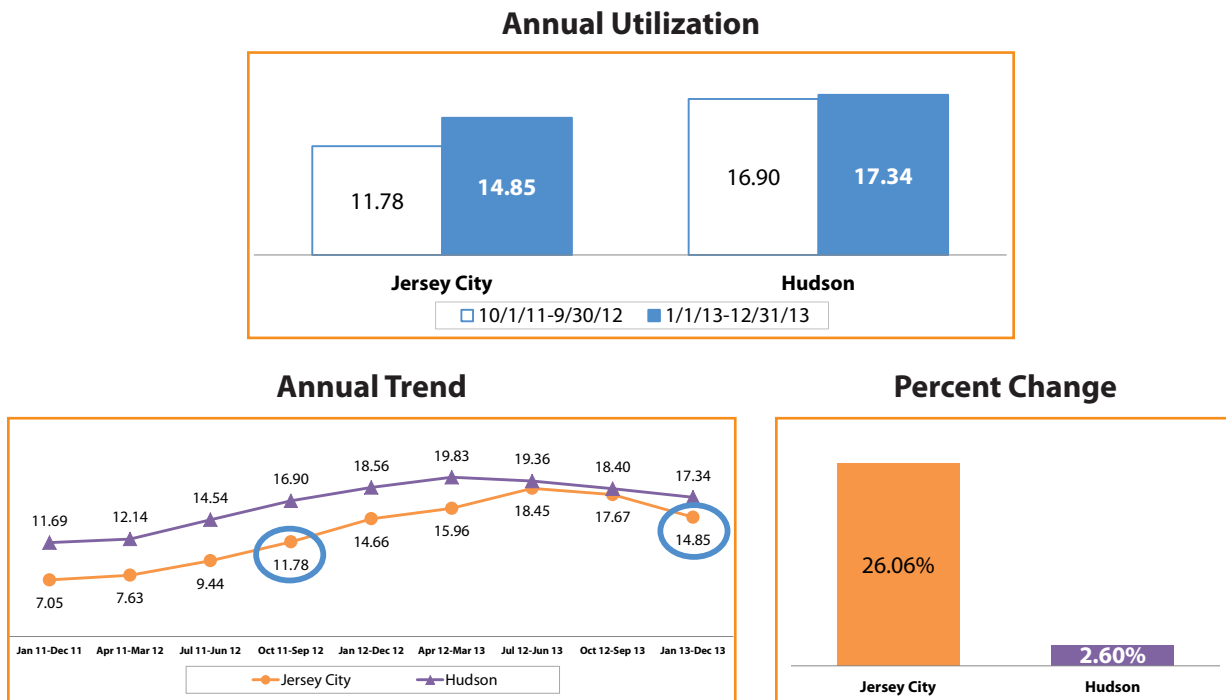
The color-coded map of Hudson County depicts regional variation in the rates of the use of the depression screening benefit from low (red) to high (blue) before and after Superstorm Sandy.

* Mapped using ZIP codes; may not display all the city names located within the ZIP code.

Neuropsychological Tests

According to the CMS Mental Health Services Billing Guide, neuropsychological tests are evaluations designed to determine the functional consequences of known or suspected brain injury through testing of the neurocognitive domains responsible for language, perception, memory, learning, problem solving, and adaptation.⁸

FIGURE 54. NEUROPSYCHOLOGICAL TESTS PER 1,000 MEDICARE FFS BENEFICIARIES



The rate of neuropsychological tests among Medicare FFS beneficiaries residing in the Jersey City community in the 12 months prior to Superstorm Sandy was 11.78 per 1,000 beneficiaries. After the storm, this rate increased to 14.85 per 1,000 beneficiaries. This change reflects a 26.06% relative increase, a larger increase than Hudson County.

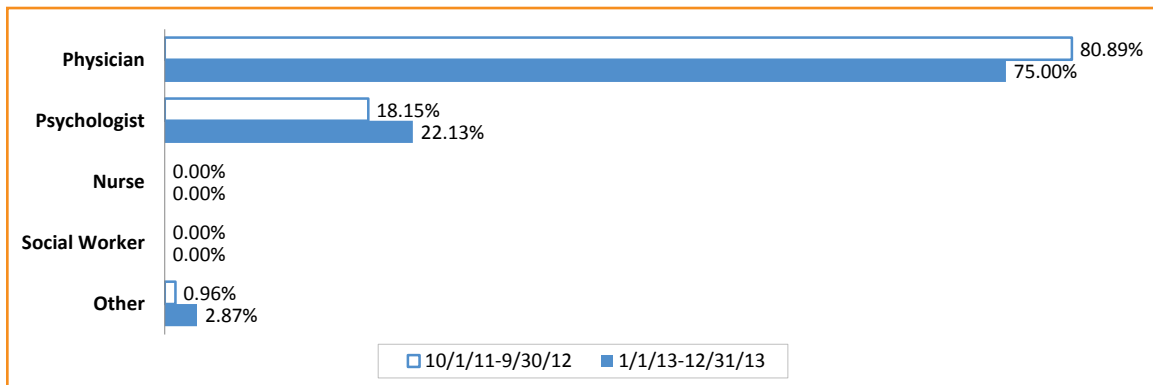
Figure 55. Provider Location for Neuropsychological Tests Claims for Medicare FFS Beneficiaries Residing in Jersey City Community*

Providers	10/1/11-9/30/12		1/1/13-12/31/13	
	Number of Claims N=314	Percent	Number of Claims N=348	Percent
Outside of New Jersey	8	2.5	9	2.6
New Jersey	306	97.5	339	97.4
• Hudson County	219	69.7	248	71.3
– Jersey City Community	47	15.0	101	29.0
• Other Counties	87	27.7	91	26.1

* Number of claims, instead of unique beneficiaries were used in this analysis because a beneficiary can have multiple encounters for these procedures at different locations.

After Superstorm Sandy, of the 348 claims filed for neuropsychological tests for beneficiaries residing in the Jersey City community, 2.6% were filed outside of New Jersey and 97.4% were filed within New Jersey. Of those filed within New Jersey, 71.3% were filed within Hudson County, 29.0% were filed in the Jersey City community, and 26.1% were filed in other counties.

FIGURE 56. NEUROPSYCHOLOGICAL TESTS CLAIMS FOR MEDICARE FFS BENEFICIARIES

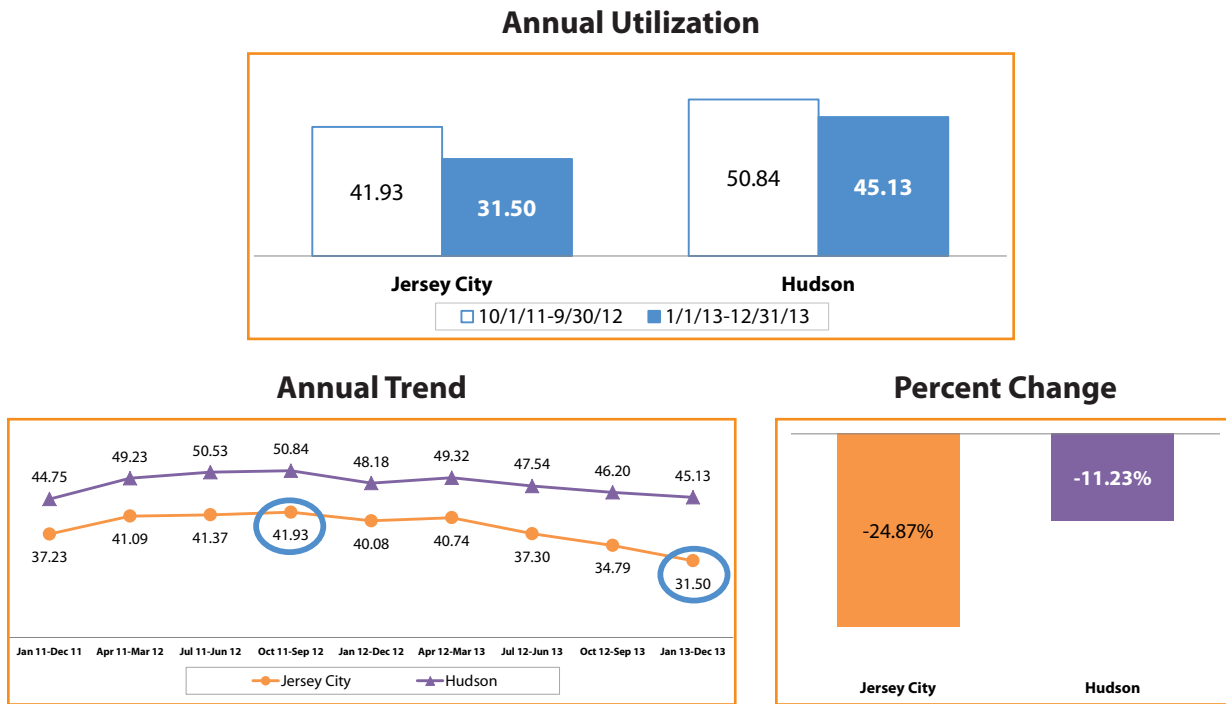


In the 12 months prior to Superstorm Sandy, 80.89% of neuropsychological tests claims were filed by physicians, 18.15% were filed by psychologists, and 0.96% were filed by others. After the storm, 75.00% of neuropsychological tests claims were filed by physicians, 22.13% were filed by psychologists, and 2.87% were filed by others.

Psychiatric Diagnostic Procedures

According to the CMS Mental Health Services Billing Guide, psychiatric diagnostic evaluation is an integrated biopsychosocial assessment, including history, mental status, and recommendations. The evaluation may include communication with family or other sources and review of diagnostic studies.⁸

FIGURE 57. PSYCHIATRIC DIAGNOSTIC PROCEDURES PER 1,000 MEDICARE FFS BENEFICIARIES



The rate of psychiatric diagnostic procedures among Medicare FFS beneficiaries residing in the Jersey City community in the 12 months prior to Superstorm Sandy was 41.93 per 1,000 beneficiaries. After the storm, this rate decreased to 31.50 per 1,000 beneficiaries. This change reflects a 24.87% relative decrease, a larger decrease than Hudson County.

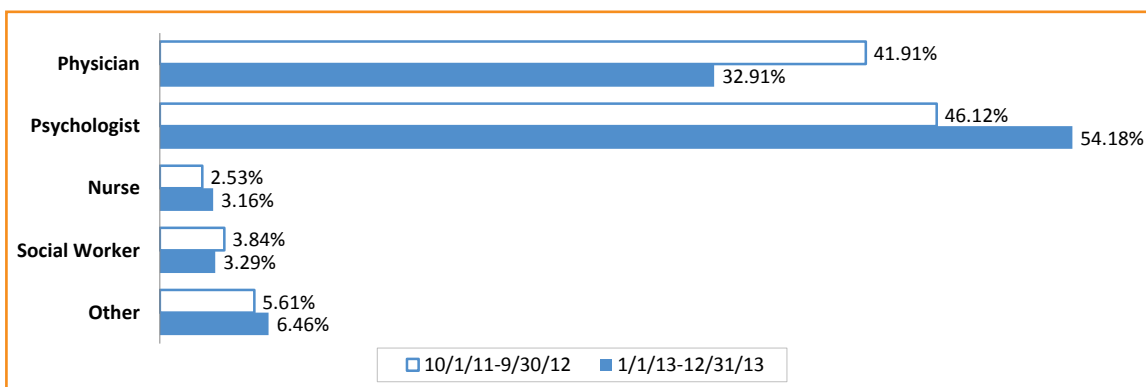
Figure 58. Provider Location for Psychiatric Diagnostic Procedures Claims for Medicare FFS Beneficiaries Residing in Jersey City Community*

Providers	10/1/11-9/30/12		1/1/13-12/31/13	
	Number of Claims N=1,069	Percent	Number of Claims N=790	Percent
Outside of New Jersey	59	5.5	47	5.9
New Jersey	1,010	94.5	743	94.1
• Hudson County	477	44.6	392	49.6
– Jersey City Community	336	31.4	240	30.4
• Other Counties	533	49.9	351	44.4

* Number of claims, instead of unique beneficiaries were used in this analysis because a beneficiary can have multiple encounters for these procedures at different locations.

After Superstorm Sandy, of the 790 claims filed for psychiatric diagnostic procedures for beneficiaries residing in the Jersey City community, 5.9% were filed outside of New Jersey and 94.1% were filed within New Jersey. Of those filed within New Jersey, 49.6% were filed within Hudson County, 30.4% were filed in the Jersey City community, and 44.4% were filed in other counties.

FIGURE 59. PSYCHIATRIC DIAGNOSTIC PROCEDURES CLAIMS FOR MEDICARE FFS BENEFICIARIES



In the 12 months prior to Superstorm Sandy, 46.12% of psychiatric diagnostic procedures claims were filed by psychologists, 41.91% were filed by physicians, 5.61% were filed by others, 3.84% were filed by social workers, and 2.53% were filed by nurses.

After the storm, 54.18% of psychiatric diagnostic procedures claims were filed by psychologists, 32.91% were filed by physicians, 6.46% were filed by others, 3.29% were filed by social workers, and 3.16% were filed by nurses.

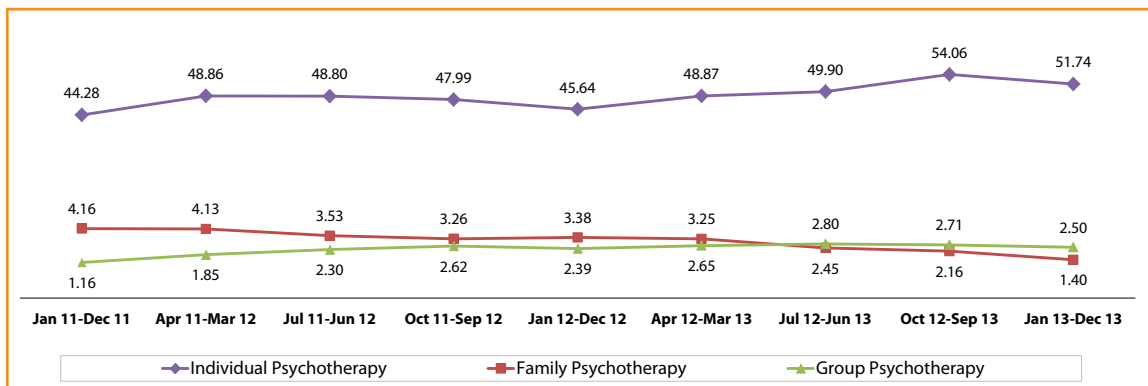
Therapies*

Summary

Figure 60. Percent Change of Behavioral Health Service Utilization – Therapies per 1,000 Medicare FFS Beneficiaries						
	Jersey City			Hudson		
	10/1/11 – 9/30/12	1/1/13 – 12/31/13	% Change	10/1/11 – 9/30/12	1/1/13 – 12/31/13	% Change
Individual Psychotherapy	47.99	51.74	7.81	57.04	57.83	1.38
Family Psychotherapy	3.26	1.40	-57.06	5.06	2.68	-47.04
Group Psychotherapy	2.62	2.50	-4.58	2.42	2.19	-9.50

The Jersey City community experienced a larger increase in the utilization of individual psychotherapy and a larger decrease in the utilization of family psychotherapy than Hudson County.

FIGURE 61. ANNUAL UTILIZATION TREND OF BEHAVIORAL HEALTH THERAPY SERVICES PER 1,000 MEDICARE FFS BENEFICIARIES



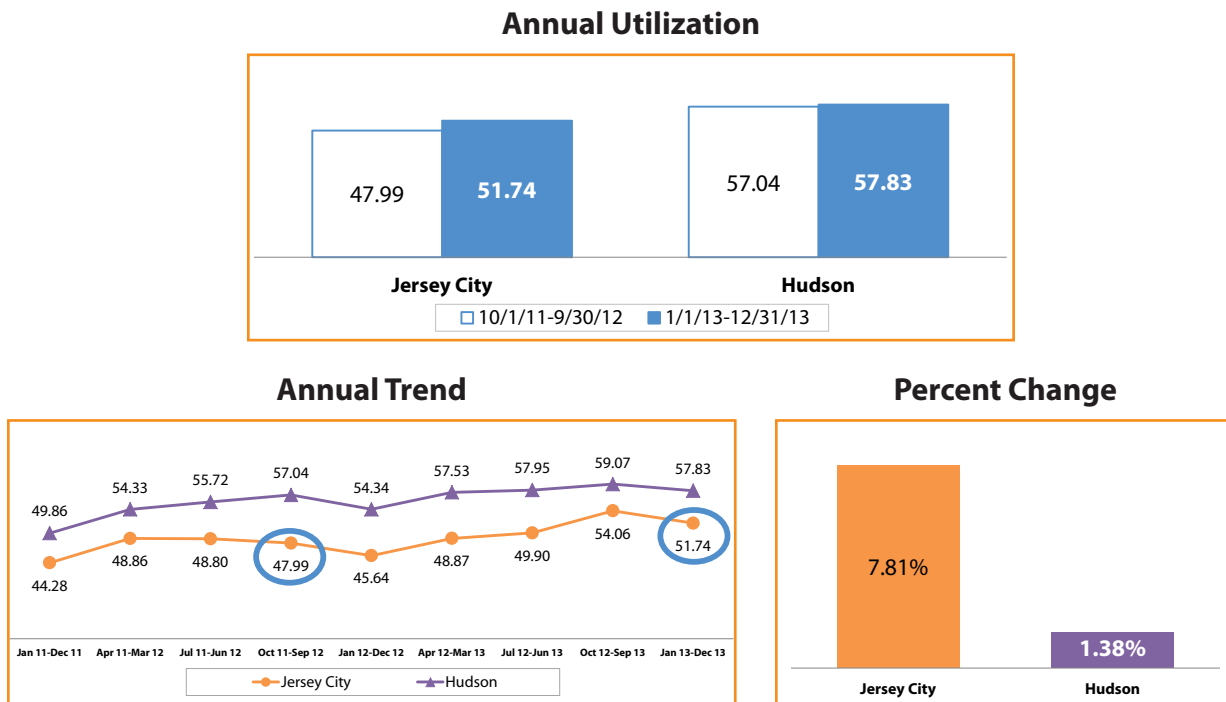
This chart reflects trending of annual utilization of behavioral health therapy services among Medicare FFS beneficiaries residing in the Jersey City community.

*The utilization rates for Electroconvulsive Therapy and Biofeedback Therapy are not provided in this profile due to low rates.

Individual Psychotherapy

According to the CMS Mental Health Services Billing Guide, individual psychotherapy is the treatment of mental illness and behavioral disturbances where the physician or other qualified health professional attempts to alleviate the emotional disturbances, reverse or change maladaptive patterns of behavior, and encourage personality growth and development. This is done through the use of definitive therapeutic communication.⁸

FIGURE 62. INDIVIDUAL PSYCHOTHERAPY PER 1,000 MEDICARE FFS BENEFICIARIES



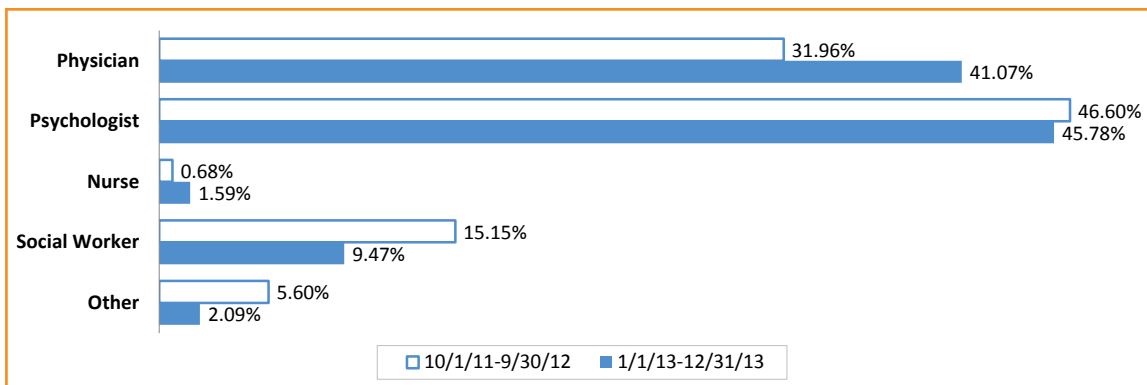
The rate of individual psychotherapy among Medicare FFS beneficiaries residing in the Jersey City community in the 12 months prior to Superstorm Sandy was 47.99 per 1,000 beneficiaries. After the storm, this rate increased to 51.74 per 1,000 beneficiaries. This change reflects a 7.81% relative increase, a larger increase than Hudson County.

Figure 63. Provider Location for Individual Psychotherapy Claims for Medicare FFS Beneficiaries Residing in Jersey City Community*				
Providers	10/1/11-9/30/12		1/1/13-12/31/13	
	Number of Claims N=5,266	Percent	Number of Claims N=5,216	Percent
Outside of New Jersey	536	10.2	445	8.5
New Jersey	4,730	89.8	4,771	91.5
• Hudson County	2,498	47.4	2,995	57.4
– Jersey City Community	1,666	31.6	2,063	39.6
• Other Counties	2,232	42.4	1,776	34.0

* Number of claims, instead of unique beneficiaries were used in this analysis because a beneficiary can have multiple encounters for these procedures at different locations.

After Superstorm Sandy, of the 5,216 claims filed for individual psychotherapy for beneficiaries residing in the Jersey City community, 8.5% were filed outside of New Jersey and 91.5% were filed within New Jersey. Of those filed within New Jersey, 57.4% were filed within Hudson County, 39.6% were filed in the Jersey City community, and 34.0% were filed in other counties.

FIGURE 64. INDIVIDUAL PSYCHOTHERAPY CLAIMS FOR MEDICARE FFS BENEFICIARIES



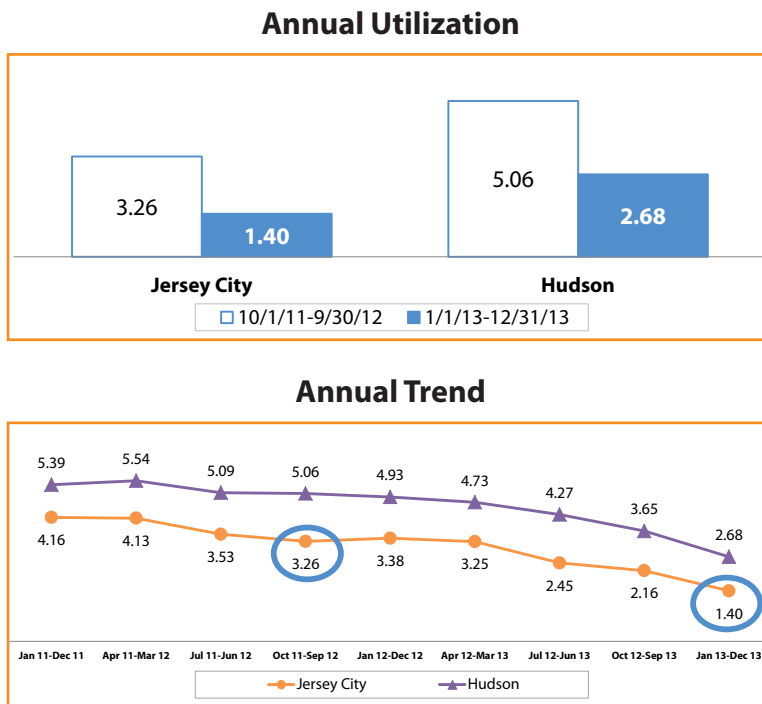
In the 12 months prior to Superstorm Sandy, 46.60% of individual psychotherapy claims were filed by psychologists, 31.96% were filed by physicians, 15.15% were filed by social workers, 5.60% were filed by others, and 0.68% were filed by nurses.

After the storm, 45.78% of individual psychotherapy claims were filed by psychologists, 41.07% were filed by physicians, 9.47% were filed by social workers, 2.09% were filed by others, and 1.59% were filed by nurses.

Family Psychotherapy

According to the CMS Mental Health Services Billing Guide, family psychotherapy describes the treatment of the family unit when maladaptive behaviors of family members are exacerbating the beneficiary’s mental illness or interfering with treatment. It can also be used to assist the family in addressing the maladaptive behaviors of the patient and improve treatment compliance.⁸

FIGURE 65. FAMILY PSYCHOTHERAPY PER 1,000 MEDICARE FFS BENEFICIARIES



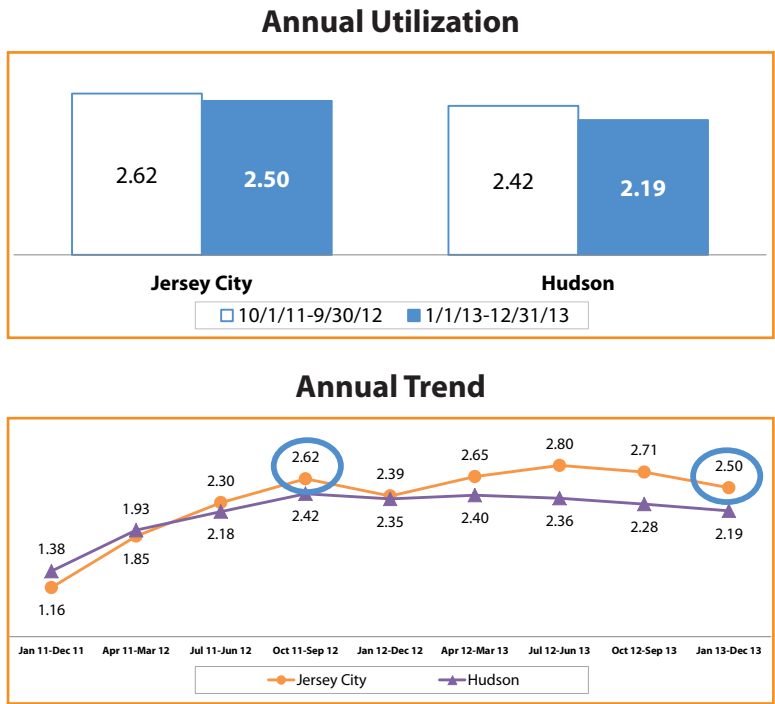
The rate of family psychotherapy among Medicare FFS beneficiaries residing in the Jersey City community in the 12 months prior to Superstorm Sandy was 3.26 per 1,000 beneficiaries. After the storm, this rate decreased to 1.40 per 1,000 beneficiaries.

Due to these low numbers, no percent change data has been provided for this therapy.

Group Psychotherapy

According to the CMS Mental Health Services Billing Guide, group psychotherapy is a form of treatment where a selected group of patients are guided by a licensed psychotherapist for the purpose of helping to change maladaptive patterns which interfere with social functioning and are associated with a diagnosable psychiatric illness.⁸

FIGURE 66. GROUP PSYCHOTHERAPY PER 1,000 MEDICARE FFS BENEFICIARIES



The rate of group psychotherapy among Medicare FFS beneficiaries residing in the Jersey City community in the 12 months prior to Superstorm Sandy was 2.62 per 1,000 beneficiaries. After the storm, this rate decreased to 2.50 per 1,000 beneficiaries, which was higher than the county rate.

Due to these low numbers, no percent change data has been provided for this therapy.

INPATIENT HEALTH SERVICES

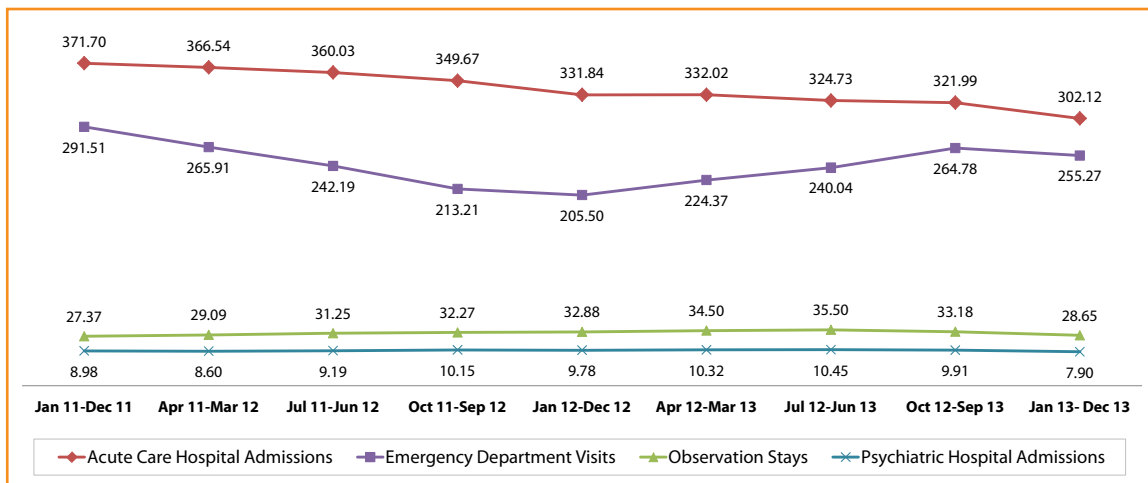
Summary

Figure 67. Percent Change of Inpatient Health Service Utilization per 1,000 Medicare FFS Beneficiaries						
	Jersey City			Hudson		
	10/1/11 – 9/30/12	1/1/13 – 12/31/13	% Change	10/1/11 – 9/30/12	1/1/13 – 12/31/13	% Change
Psychiatric Admissions	10.15	7.90	-22.17	9.84	8.36	-15.04
Acute Care Hospital Admissions	349.67	302.12	-13.60	339.25	306.50	-9.65
Emergency Department Visits*	213.21	255.27	19.73	245.61	252.89	2.96
Observation Stays*	32.27	28.65	-11.22	21.52	20.17	-6.27

* Emergency department visits and observation stay rates were based on inpatient Part A claims only.

The Jersey City community experienced a larger decrease in psychiatric hospital and acute care hospital admissions as well as in observation stays. It also experienced a larger increase in emergency department visits than Hudson County.

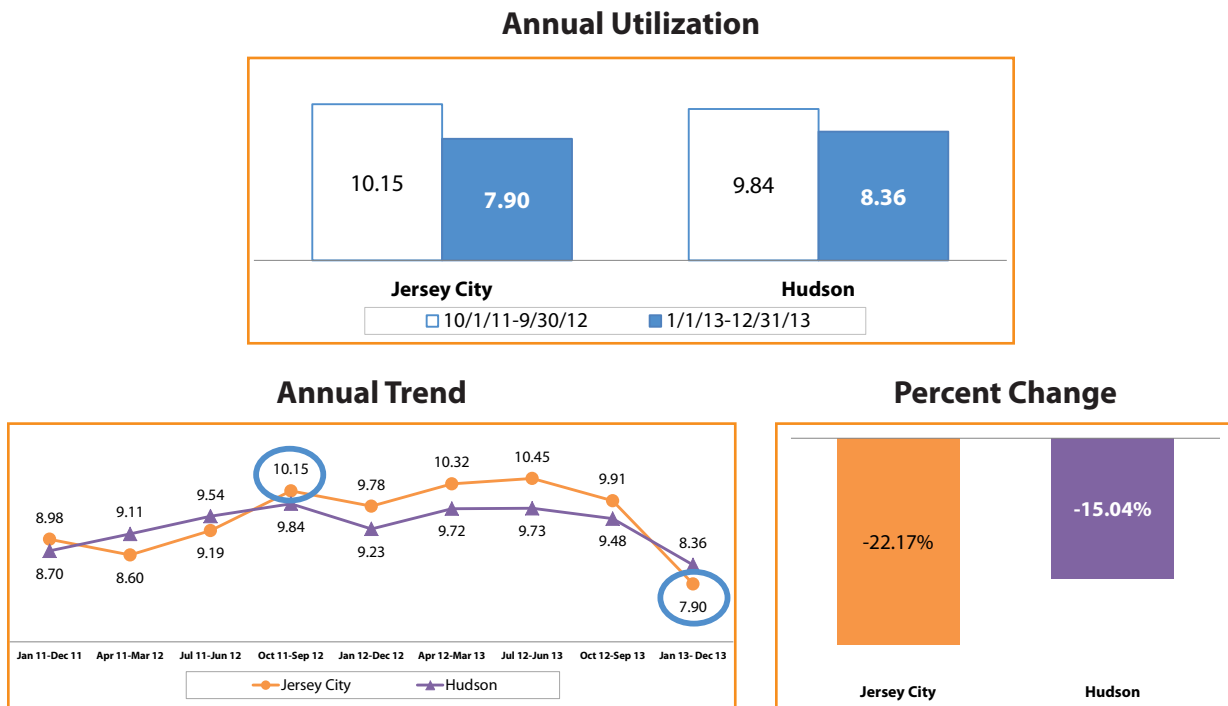
FIGURE 68. ANNUAL UTILIZATION TREND OF INPATIENT HEALTH SERVICES PER 1,000 MEDICARE FFS BENEFICIARIES



This chart reflects trending of annual utilization of inpatient health services among Medicare FFS beneficiaries residing in the Jersey City community.

Psychiatric Hospital Admissions

FIGURE 69. PSYCHIATRIC HOSPITAL ADMISSIONS PER 1,000 MEDICARE FFS BENEFICIARIES



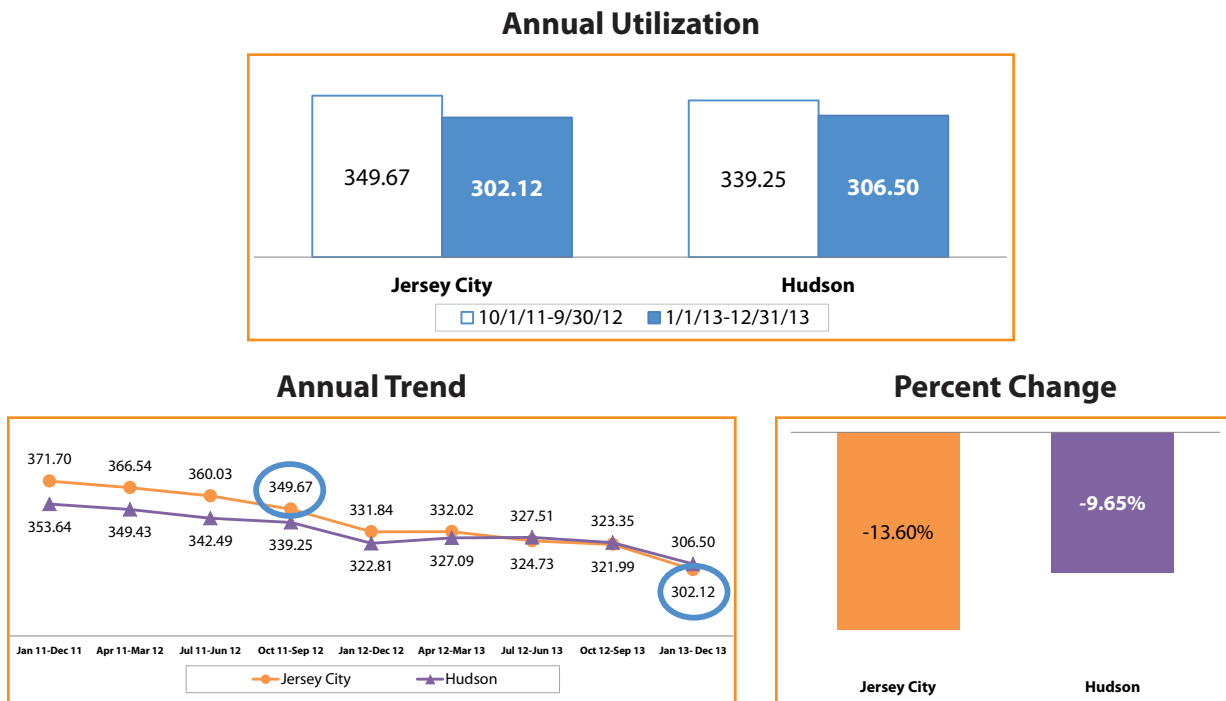
In the 12 months prior to Superstorm Sandy, standalone psychiatric hospitals or distinct part psychiatric units in acute care hospitals in the Jersey City community had an admissions rate of 10.15 per 1,000 Medicare FFS beneficiaries. After the storm, the rate decreased to 7.90 per 1,000 beneficiaries. This change reflects a 22.17% relative decrease, a larger decrease than Hudson County.

Acute Care Hospitals

Admissions

The following data shows all-cause utilization measures and includes all Medicare FFS beneficiaries, not just beneficiaries with behavioral health conditions.

FIGURE 70. ACUTE CARE HOSPITAL ADMISSIONS PER 1,000 MEDICARE FFS BENEFICIARIES

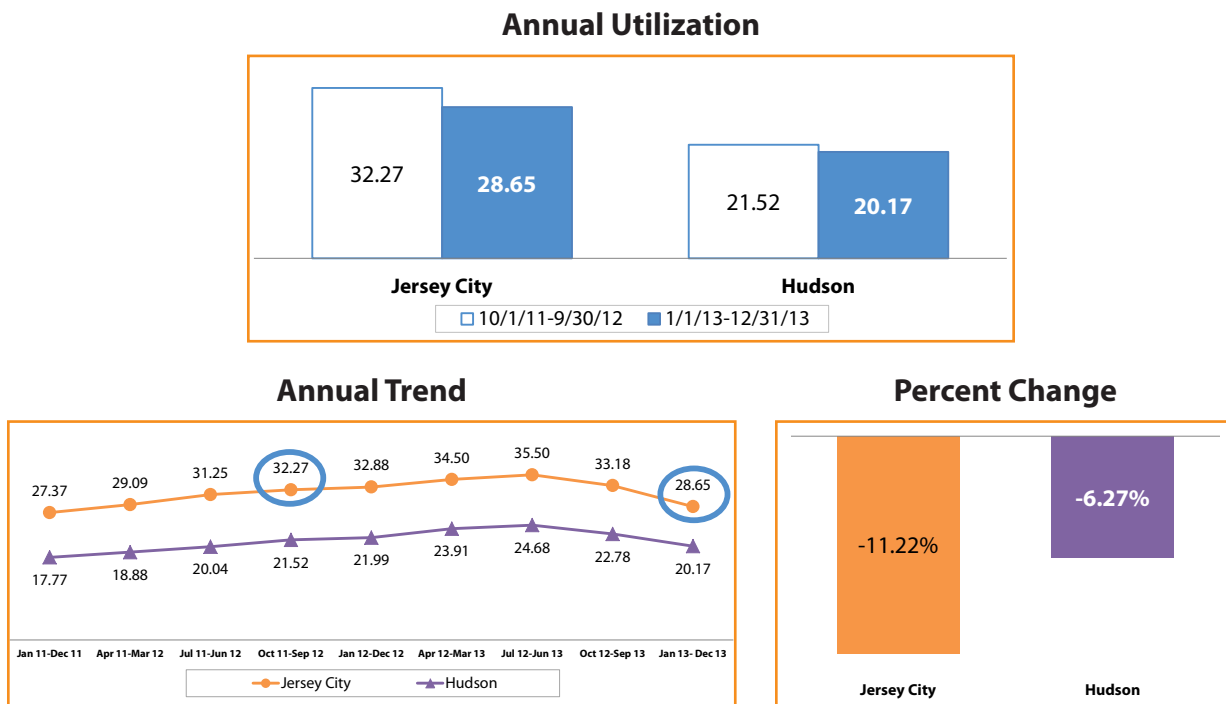


In the 12 months prior to Superstorm Sandy, acute care hospitals in the Jersey City community had an acute care admissions rate of 349.67 per 1,000 Medicare FFS beneficiaries. After the storm, the rate decreased to 302.12 per 1,000 beneficiaries. This change reflects a 13.60% relative decrease, a larger decrease than Hudson County.

Observation Stays

According to the U.S. Department of Health and Human Services, observation stays are short-term treatments and assessments provided to Medicare FFS beneficiaries as outpatients to determine whether they require further treatment as inpatients or can be discharged.

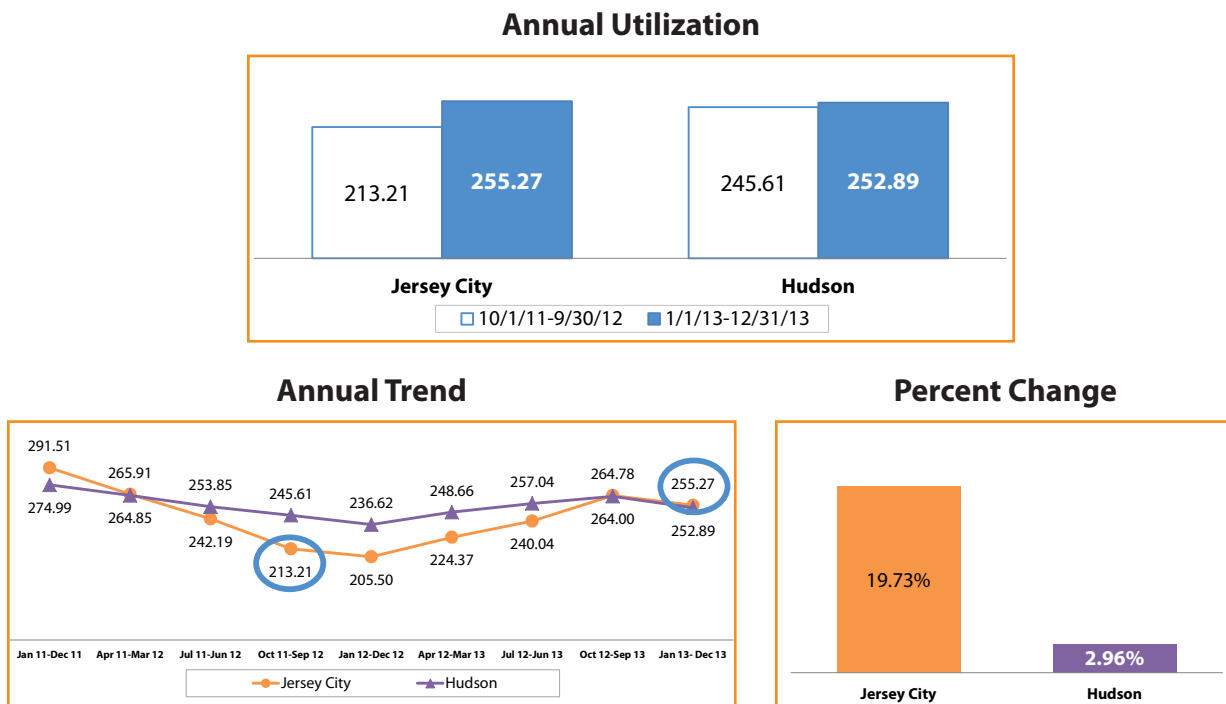
FIGURE 71. OBSERVATION STAYS PER 1,000 MEDICARE FFS BENEFICIARIES



In the 12 months prior to Superstorm Sandy, observation stays in acute care hospitals in the Jersey City community had a rate of 32.27 per 1,000 Medicare FFS beneficiaries. After the storm, the rate decreased to 28.65 per 1,000 beneficiaries, which was higher than the county rate. This change reflects an 11.22% relative decrease, a larger decrease than Hudson County.

Emergency Department Visits

FIGURE 72. EMERGENCY DEPARTMENT VISITS PER 1,000 MEDICARE FFS BENEFICIARIES



In the 12 months prior to Superstorm Sandy, emergency department visits in the Jersey City community had a rate of 213.21 per 1,000 Medicare FFS beneficiaries. After the storm, the rate increased to 255.27 per 1,000 beneficiaries, which was higher than the county rate. This change reflects a 19.73% relative increase, a larger increase than Hudson County.

Within 30 Days of Acute Care Hospital Discharge

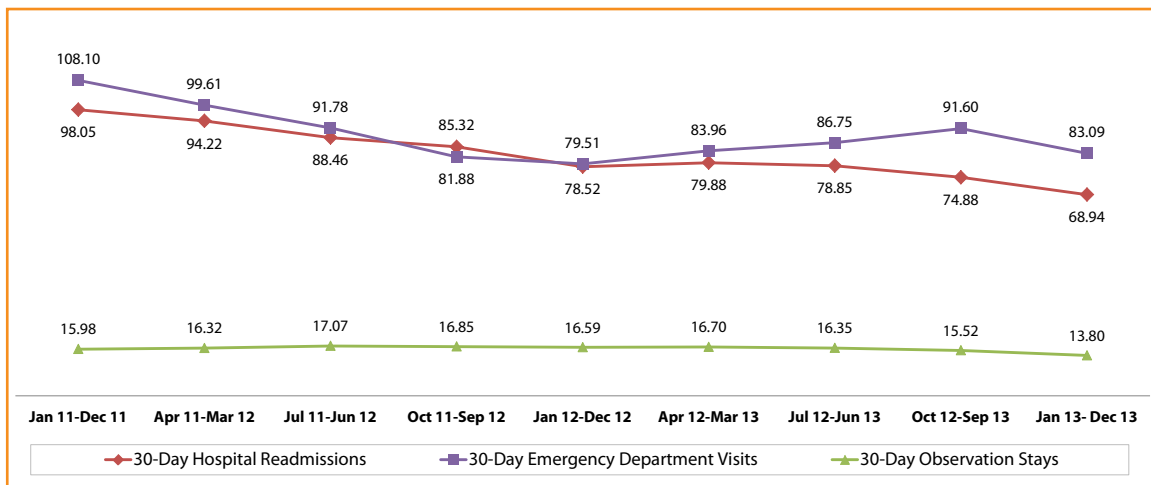
Summary

Figure 73. Percent Change of Inpatient Health Service Utilization Within 30 Days of Discharge per 1,000 Medicare FFS Beneficiaries						
	Jersey City			Hudson		
	10/1/11 – 9/30/12	1/1/13 – 12/31/13	% Change	10/1/11 – 9/30/12	1/1/13 – 12/31/13	% Change
30-Day Hospital Readmissions	85.32	68.94	-19.20	75.79	65.97	-12.96
Emergency Department Visits*	81.88	83.09	1.48	82.47	78.58	-4.72
Observation Stays*	16.85	13.80	-18.10	11.99	10.93	-8.84

* Emergency department visits and observation stay rates were based on both inpatient and outpatient Part A claims.

The Jersey City community experienced a larger decrease in 30-day hospital readmissions and observation stays that occurred within 30 days of discharge than Hudson County.

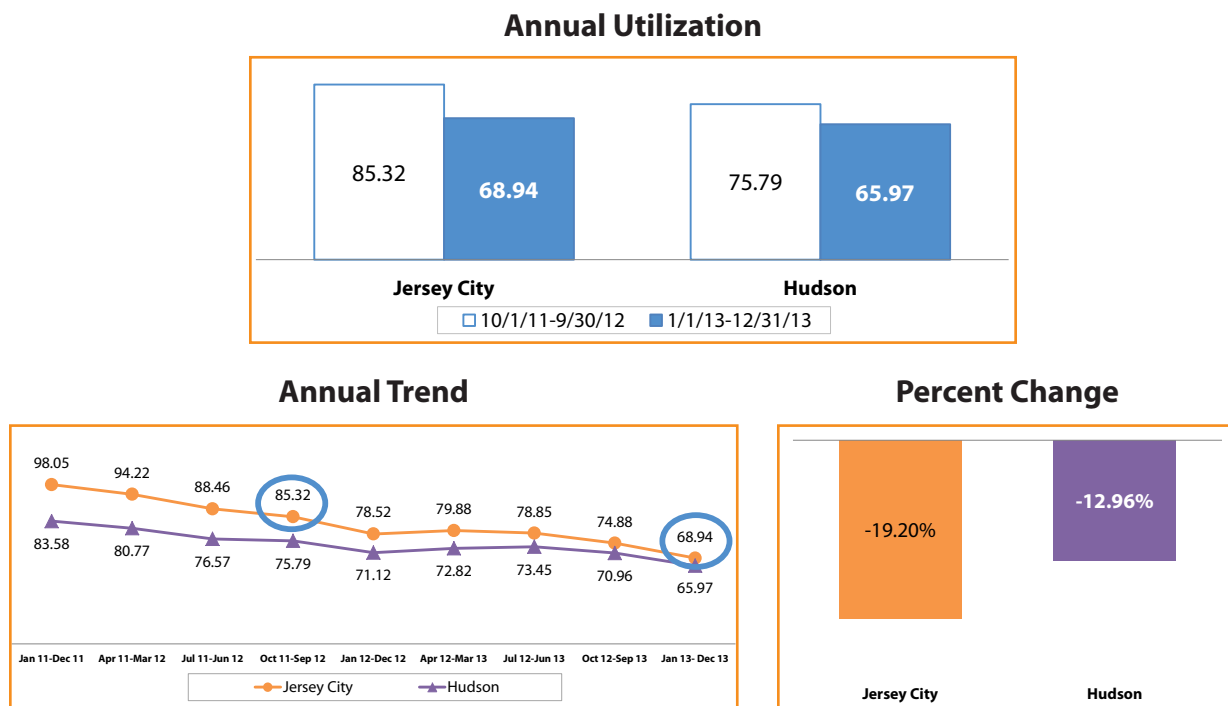
FIGURE 74. ANNUAL UTILIZATION TREND OF INPATIENT HEALTH SERVICES WITHIN 30 DAYS OF DISCHARGE PER 1,000 MEDICARE FFS BENEFICIARIES



This chart reflects trending of annual utilization of inpatient health services within 30 days of discharge among Medicare FFS beneficiaries residing in the Jersey City community.

30-Day Hospital Readmissions

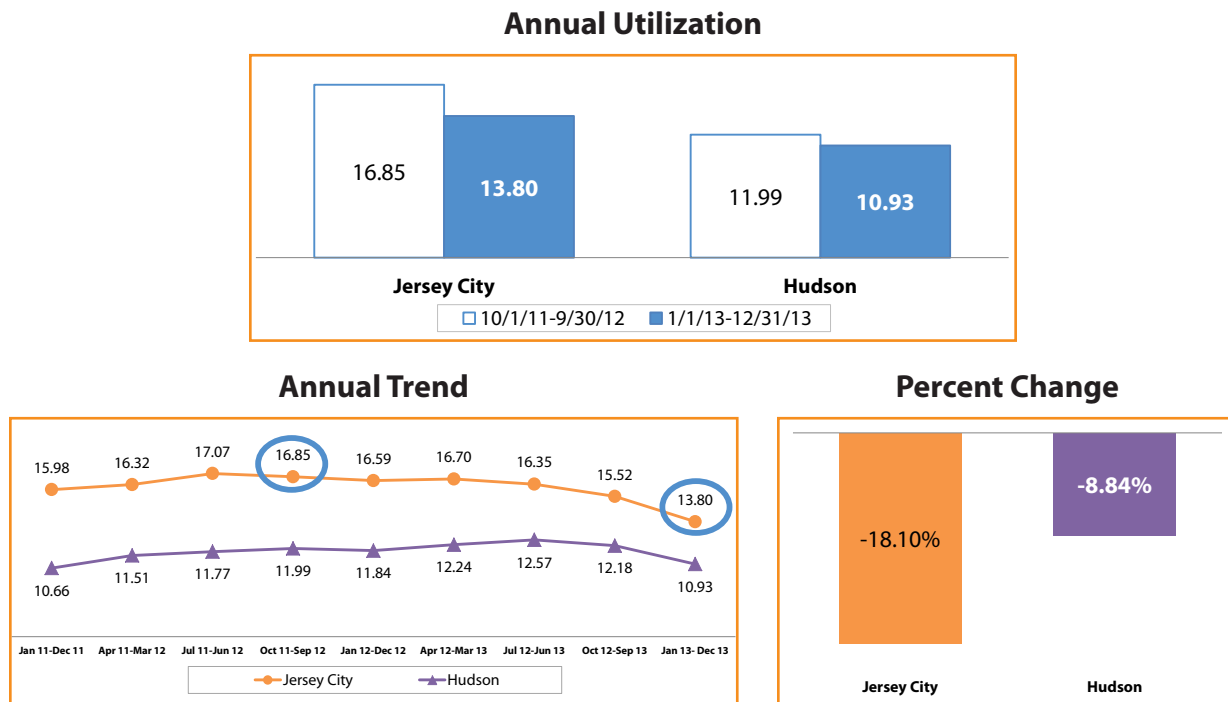
FIGURE 75. 30-DAY HOSPITAL READMISSIONS PER 1,000 MEDICARE FFS BENEFICIARIES



In the 12 months prior to Superstorm Sandy, acute care hospitals in the Jersey City community had a 30-day readmissions rate of 85.32 per 1,000 Medicare FFS beneficiaries. After the storm, the rate decreased to 68.94 per 1,000 beneficiaries, which was higher than the county rate. This change reflects a 19.20% relative decrease, a larger decrease than Hudson County.

Observation Stays Within 30 Days of Discharge

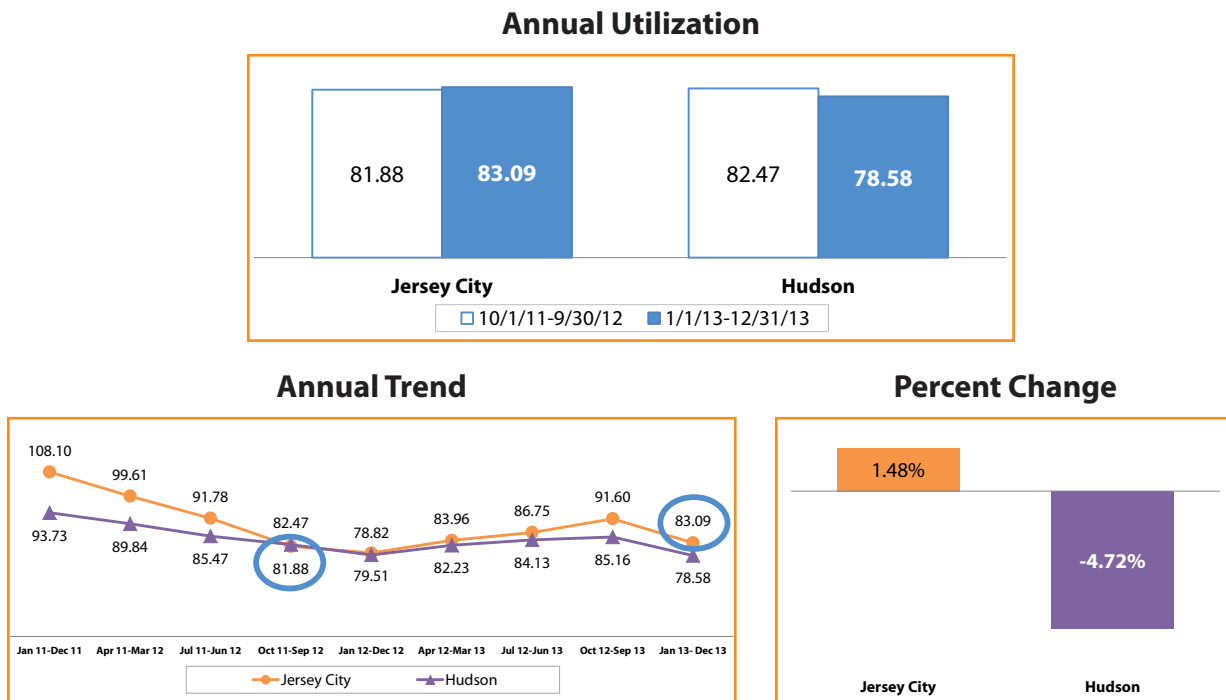
FIGURE 76. OBSERVATION STAYS WITHIN 30 DAYS OF DISCHARGE PER 1,000 MEDICARE FFS BENEFICIARIES



In the 12 months prior to Superstorm Sandy, the rate of observation stays within 30 days of discharge in the Jersey City community was 16.85 per 1,000 Medicare FFS beneficiaries. After the storm, the rate decreased to 13.80 per 1,000 beneficiaries, which was higher than the county rate. This change reflects an 18.10% relative decrease, a larger decrease than Hudson County.

Emergency Department Visits Within 30 Days of Discharge

FIGURE 77. EMERGENCY DEPARTMENT VISITS WITHIN 30 DAYS OF DISCHARGE PER 1,000 MEDICARE FFS BENEFICIARIES



In the 12 months prior to Superstorm Sandy, the rate of emergency department visits within 30 days of discharge in the Jersey City community was 81.88 per 1,000 Medicare FFS beneficiaries. After the storm, the rate increased to 83.09 per 1,000 beneficiaries, which was higher than the county rate. This change reflects a 1.48% relative increase.

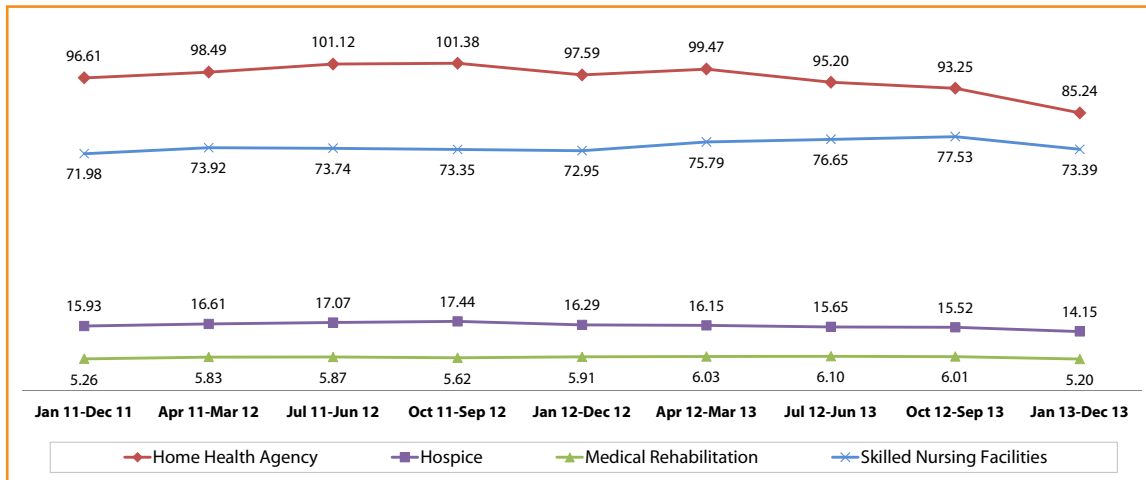
Other Settings

Summary

Figure 78. Percent Change of Other Health Services Utilization per 1,000 Medicare FFS Beneficiaries						
	Jersey City			Hudson		
	10/1/11 – 9/30/12	1/1/13 – 12/31/13	% Change	10/1/11 – 9/30/12	1/1/13 – 12/31/13	% Change
Home Health Agency	101.38	85.24	-15.92	97.65	88.29	-9.59
Skilled Nursing Facility	73.35	73.39	0.05	72.46	72.27	-0.26
Hospice	17.44	14.15	-18.86	18.25	15.52	-14.96
Medical Rehabilitation	5.62	5.20	-7.47	8.03	6.75	-15.94

The Jersey City community experienced a larger decrease in home health agency and hospice services than Hudson County.

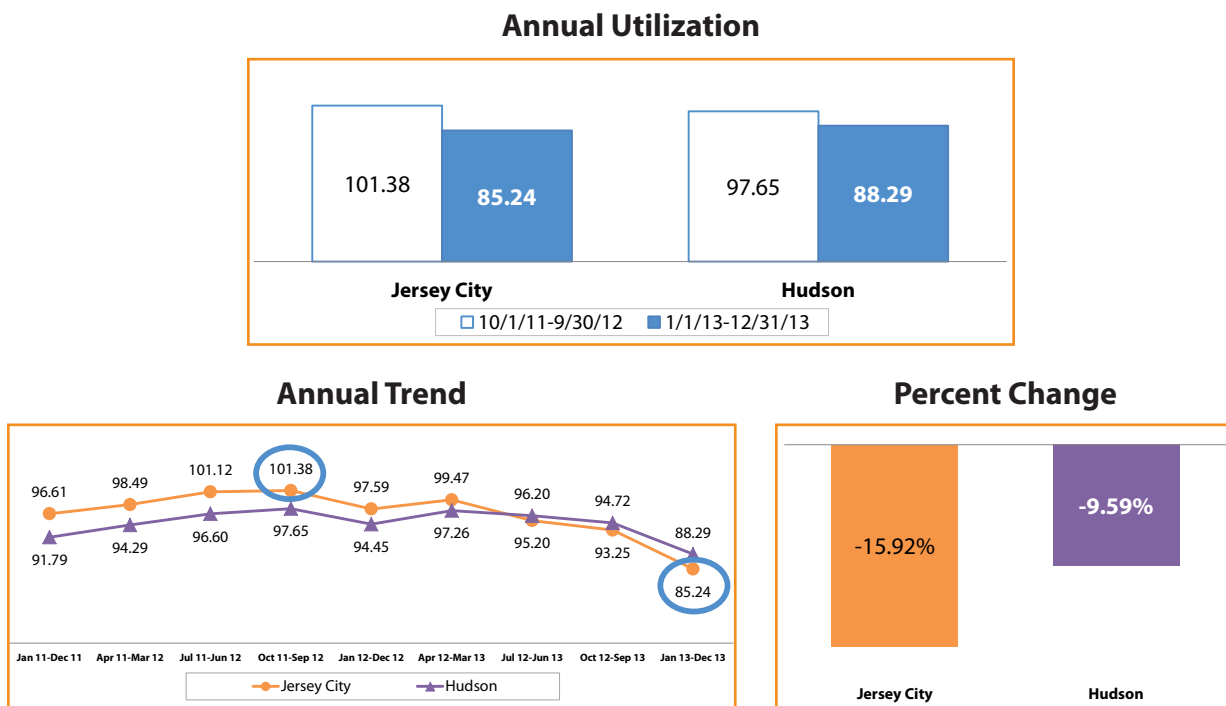
FIGURE 79. ANNUAL UTILIZATION TREND IN OTHER HEALTH SERVICES PER 1,000 MEDICARE FFS BENEFICIARIES



This chart reflects trending of annual utilization of other health services among Medicare FFS beneficiaries residing in the Jersey City community.

Home Health Agency Services

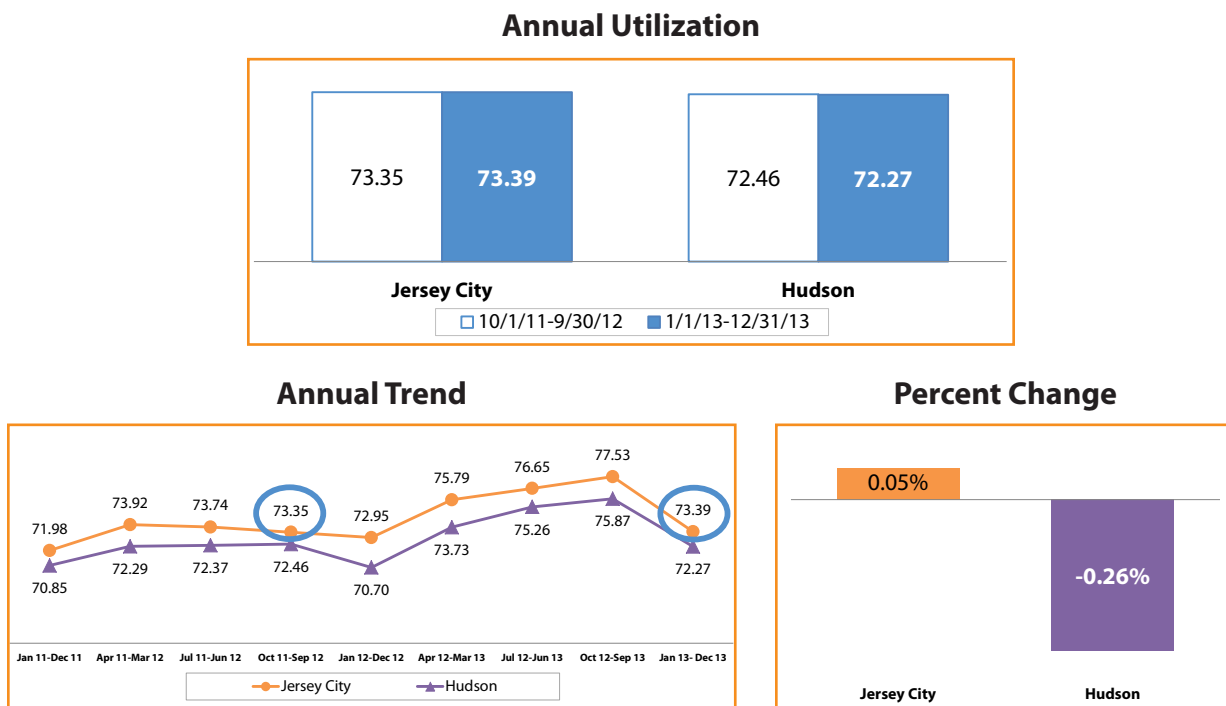
FIGURE 80. HOME HEALTH AGENCY SERVICES PER 1,000 MEDICARE FFS BENEFICIARIES



In the 12 months prior to Superstorm Sandy, the utilization rate of home health agency services in the Jersey City community was 101.38 per 1,000 Medicare FFS beneficiaries. After the storm, the rate decreased to 85.24 per 1,000 beneficiaries. This change reflects a 15.92% relative decrease, a larger decrease than Hudson County.

Skilled Nursing Facility Services

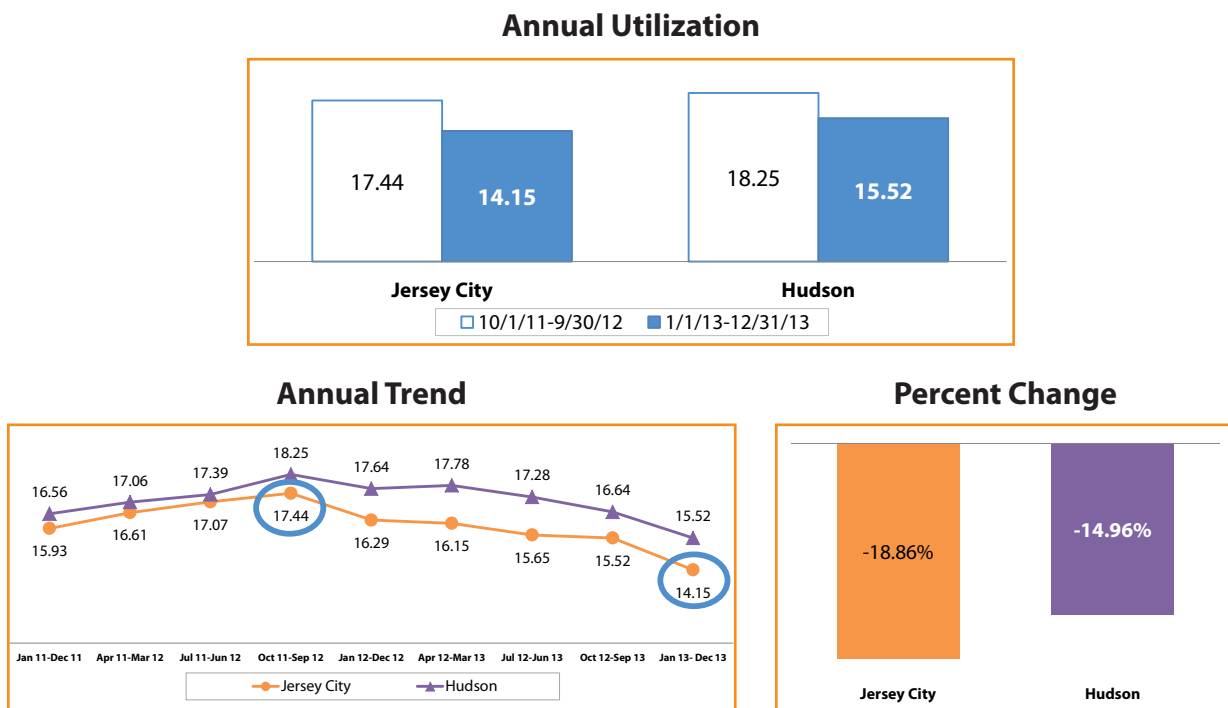
FIGURE 81. SKILLED NURSING FACILITY SERVICES PER 1,000 MEDICARE FFS BENEFICIARIES



In the 12 months prior to Superstorm Sandy, the utilization rate of skilled nursing facility services in the Jersey City community was 73.35 per 1,000 Medicare FFS beneficiaries. After the storm, the rate increased to 73.39 per 1,000 beneficiaries, which was higher than the county rate. This change reflects a 0.05% relative increase.

Hospice Services

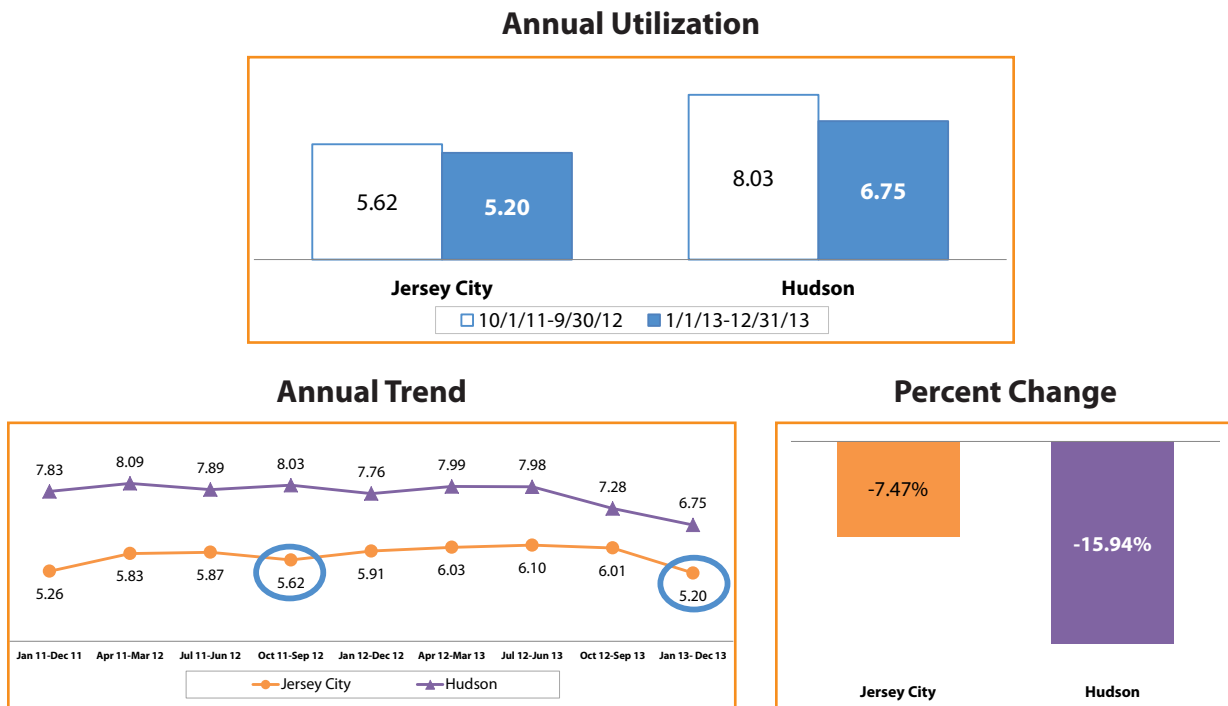
FIGURE 82. HOSPICE SERVICES PER 1,000 MEDICARE FFS BENEFICIARIES



In the 12 months prior to Superstorm Sandy, the utilization rate of hospice services in the Jersey City community was 17.44 per 1,000 Medicare FFS beneficiaries. After the storm, the rate decreased to 14.15 per 1,000 beneficiaries. This change reflects an 18.86% relative decrease, a larger decrease than Hudson County.

Medical Rehabilitation Services

FIGURE 83. MEDICAL REHABILITATION SERVICES PER 1,000 MEDICARE FFS BENEFICIARIES



In the 12 months prior to Superstorm Sandy, the utilization rate of medical rehabilitation services in the Jersey City community was 5.62 per 1,000 Medicare FFS beneficiaries. After the storm, the rate decreased to 5.20 per 1,000 beneficiaries, reflecting a 7.47% relative decrease.

LISTING OF MAJOR HEALTH PROVIDERS

The list below shows the major healthcare facilities that provided 90% of all health services to beneficiaries residing in the Jersey City community. These are providers in different care settings and are not restricted to behavioral health providers or services. The map on the following page depicts the location of these providers in relation to the community.

Acute Care Hospitals

CarePoint Health - Bayonne Medical Center
 CarePoint Health - Christ Hospital
 CarePoint Health - Hoboken University Medical Center
 Hackensack University Medical Center
 Jersey City Medical Center
 Meadowlands Hospital Medical Center
 Newark Beth Israel Medical Center
 Palisades Medical Center
 The University Hospital

Psychiatric Facilities

Jersey City Medical Center

Skilled Nursing Facilities

Alaris Health at Hamilton Park
 Alaris Health at Harbor View
 Alaris Health at Jersey City
 Alaris Health at the Fountains - North Campus-South Campus
 Liberty House Nursing Home of Jersey City
 Margaret Anna Cusack Care Center
 TCU at Bayonne Medical Center

Hospice Facilities

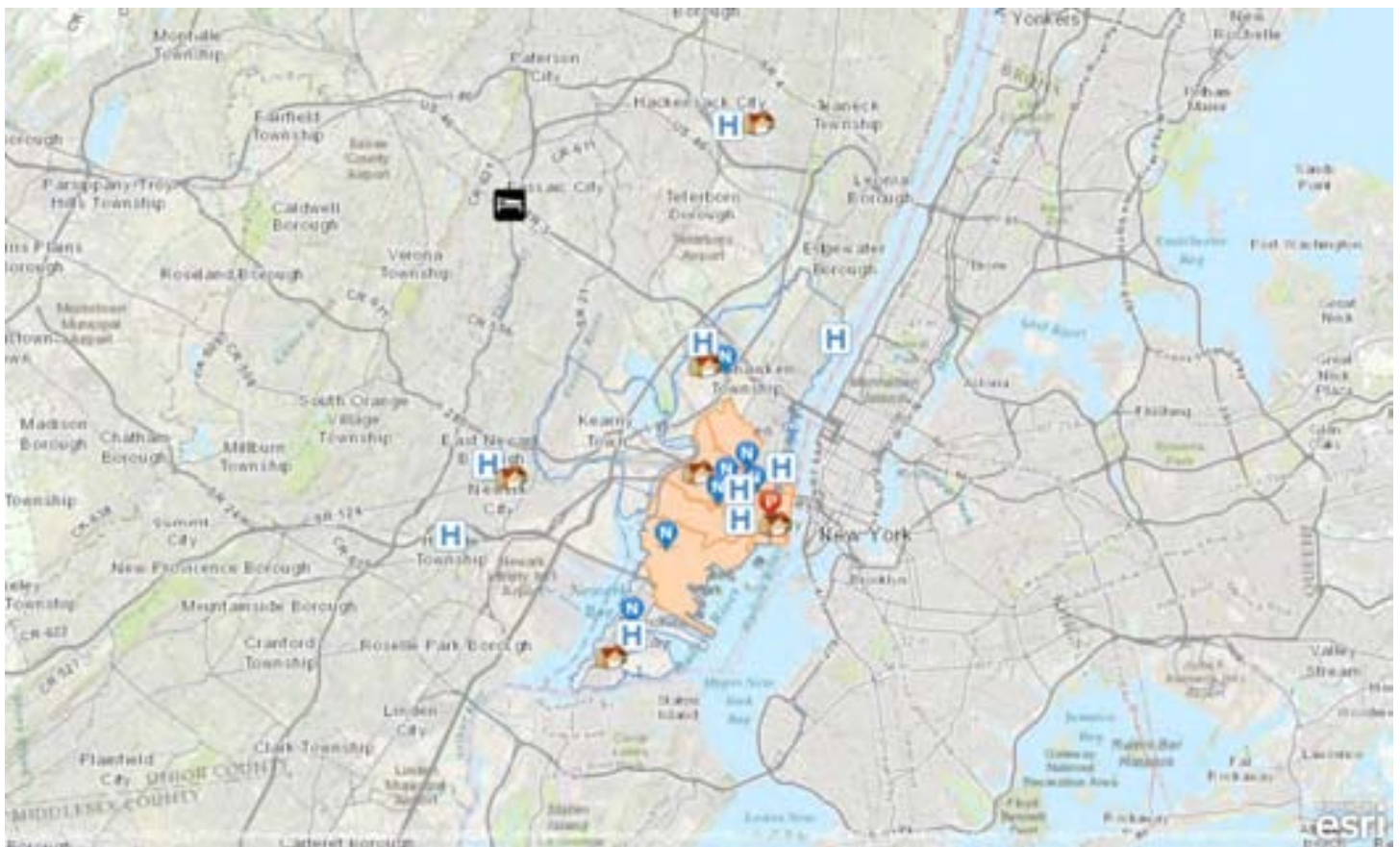
Compassionate Care Hospice-Passaic

Home Health Agencies

Bayada Home Health Care - Hudson County Visit Office
 Bayonne Visiting Nurse Association
 Home Health Services of Hackensack (2 locations)
 Promise Care New Jersey, LLC
 Visiting Nurse Association Health Group

JERSEY CITY COMMUNITY PROVIDERS

The map below shows the major healthcare facilities that served the beneficiaries of the Jersey City community based on the Medicare Part A claims database. These are providers in all different care settings and are not restricted to behavioral health providers or services. There are 11 providers located in the community: five nursing homes, three hospitals, two home health agencies, and one psychiatric hospital.



APPENDIX A: BEHAVIORAL HEALTH CONDITIONS

Documentation and Technical Notes

The following defines the study population, the time frames, and the exclusion and inclusion criteria:

Data Source

- New Jersey Medicare FFS Part A and Part B claims data and denominator file

Reference Time Period

- Annual prevalence for the selected behavioral health conditions comparing October 2011 –September 2012 to January 1, 2013 – December 31, 2013
- Annual prevalence trend with quarterly rolling for the selected behavioral health conditions (data starting from January 1, 2011 to December 31, 2013)
- Quarterly new incidence trend of conditions that were not existent (not reported) in the past 12 months of the selected eight behavioral health conditions (data starting from January 1, 2012 to December 31, 2013)

Mapping Tool

- QGIS Development Team, 2014, QGIS Geographic Information System. Open Source Geospatial Foundation Project. <http://qgis.osgeo.org>
- Source: ZIP code boundaries based on the 2013 U.S. Census Tiger Files

Denominator

- Denominator was the sum of all eligible Medicare FFS beneficiaries who were in the CMS denominator file during the measurement time frame
- Eligible beneficiaries were computed after adjusting for total enrolled FFS days divided by the total measurement days in the time frame
- Where Medicare FFS enrolled days > 0

Numerator

- Unique Medicare FFS beneficiaries with disease-specific inpatient or outpatient claims during the time frame
- CCW and AHRQ disease diagnosis code match (ICD-9-CM codes) Part A dgns_cd_1-25 and dgns_e_cd_1-3; Match Part B dgns_cd_1_12

Exclusions

- HMO coverage period
- Age <18 or >= 110; Age calculated as end date of time frame or date of death – birth date
- Eligible Medicare FFS days/total measurement days = 0

Resources

More information on the classification codes, requirements, and processing of the behavioral health conditions highlighted in this profile can be located at the following links:

- Buccaneer, A General Dynamics Company. Chronic Condition Data Warehouse: Additions and Access – Task Order 10 New Clinical Conditions: Requirements and Processing
- [Internet]. [unknown]: Buccaneer, A General Dynamics Company. 2013 May 22 [cited 17 Sep 2013]. Available from: https://www.ccwdata.org/cs/groups/public/documents/document/clin_cond_algo_req_proc.pdf
- Healthcare Cost and Utilization Project (H-CUP). Clinical Classifications Software (CCS) for ICD-9-CM [Internet]. Rockville (MD): Agency for Healthcare Research and Quality; Nov 2013 [15 Sep 2013]. Available from: <http://www.hcup-us.ahrq.gov/toolssoftware/ccs/ccs.jsp>

The following table shows the ICD-9-CM codes for the eight behavioral health conditions:

Behavioral Health Conditions	Numerator: Valid ICD-9-CM Codes
Depression or Proxy Disorders (Depression, Anxiety Disorders or Adjustment Disorders)	29384, 29620, 29621, 29622, 29623, 29624, 29625, 29626, 29630, 29631, 29632, 29633, 29634, 29635, 29636, 30000, 30001, 30002, 30009, 30010, 30020, 30021, 30022, 30023, 30029, 3003, 3004, 3005, 30089, 3009, 3080, 3081, 3082, 3083, 3084, 3089, 3090, 3091, 30922, 30923, 30924, 30928, 30929, 3093, 3094, 30981, 30982, 30983, 30989, 3099, 311, 3130, 3131, 31321, 31322, 3133, 31382, 31383, V790
Depression	29620, 29621, 29622, 29623, 29624, 29625, 29626, 29630, 29631, 29632, 29633, 29634, 29635, 29636, 3004, 311, V790
Anxiety Disorders	29384, 30000, 30001, 30002, 30009, 30010, 30020, 30021, 30022, 30023, 30029, 3003, , 3005, 30089, 3009, 3080, 3081, 3082, 3083, 3084, 3089, 3130, 3131, 31321, 31322, 3133, 31382, 31383
Adjustment Disorders	3090, 3091, 30922, 30923, 30924, 30928, 30929, 3093, 3094, 30981, 30982, 30983, 30989, 3099
Post-Traumatic Stress Disorder (PTSD)	30981
Alcohol or Substance Abuse	2920, 29211, 29212, 2922, 29281, 29282, 29283, 29284, 29285, 29289, 2929, 30400, 30401, 30402, 30403, 30410, 30411, 30412, 30413, 30420, 30421, 30422, 30423, 30430, 30431, 30432, 30433, 30440, 30441, 30442, 30443, 30450, 30451, 30452, 30453, 30460, 30461, 30462, 30463, 30470, 30471, 30472, 30473, 30480, 30481, 30482, 30483, 30490, 30491, 30492, 30493, 30520, 30521, 30522, 30523, 30530, 30531, 30532, 30533, 30540, 30541, 30542, 30543, 30550, 30551, 30552, 30553, 30560, 30561, 30562, 30563, 30570, 30571, 30572, 30573, 30580, 30581, 30582, 30583, 30590, 30591, 30592, 30593, 64830, 64831, 64832, 64833, 64834, 65550, 65551, 65553, 76072, 76073, 76075, 7795, 96500, 96501, 96502, 96509, V6542 Alcohol Abuse: 2910, 2911, 2912, 2913, 2914, 2915, 2918, 29181, 29182, 29189, 2919, 30300, 30301, 30302, 30303, 30390, 30391, 30392, 30393, 30500, 30501, 30502, 30503, 76071, 9800

Behavioral Health Conditions	Numerator: Valid ICD-9-CM Codes
Substance Abuse Alone	2920, 29211, 29212, 2922, 29281, 29282, 29283, 29284, 29285, 29289, 2929, 30400, 30401, 30402, 30403, 30410, 30411, 30412, 30413, 30420, 30421, 30422, 30423, 30430, 30431, 30432, 30433, 30440, 30441, 30442, 30443, 30450, 30451, 30452, 30453, 30460, 30461, 30462, 30463, 30470, 30471, 30472, 30473, 30480, 30481, 30482, 30483, 30490, 30491, 30492, 30493, 30520, 30521, 30522, 30523, 30530, 30531, 30532, 30533, 30540, 30541, 30542, 30543, 30550, 30551, 30552, 30553, 30560, 30561, 30562, 30563, 30570, 30571, 30572, 30573, 30580, 30581, 30582, 30583, 30590, 30591, 30592, 30593, 64830, 64831, 64832, 64833, 64834, 65550, 65551, 65553, 76072, 76073, 76075, 7795, 96500, 96501, 96502, 96509, V6542
Suicide and Intentional Self-Inflicted Injury	E9500, E9501, E9502, E9503, E9504, E9505, E9506, E9507, E9508, E9509, E9510, E9511, E9518, E9520, E9521, E9528, E9529, E9530, E9531, E9538, E9539, E954, E9550, E9551, E9552, E9553, E9554, E9555, E9556, E9557, E9559, E956, E9570, E9571, E9572, E9579, E9580, E9581, E9582, E9583, E9584, E9585, E9586, E9587, E9588, E9589, E959, V6284

APPENDIX B: RISK FACTORS FOR DEPRESSION OR PROXY DISORDERS

Documentation and Technical Notes

The following defines the study population, the time frame, the exclusion and inclusion criteria, and the literature review references:

Data Source

- New Jersey Medicare FFS Part A and Part B claims data and denominator file

Reference Time Period

- Annual prevalence of risk factors for depression or proxy disorders comparing October 1, 2011 – September 30, 2012 to January 1, 2013 – December 31, 2013
- Annual prevalence trend for risk factors for depression or proxy disorders consists of nine points of data with rolling quarters (starting January 1, 2011 and December 31, 2013)

Mapping Tool

- QGIS Development Team, 2014, QGIS Geographic Information System. Open Source Geospatial Foundation Project. <http://qgis.osgeo.org>
- Source: ZIP code boundaries based on the 2013 U.S. Census Tiger Files

Denominator

- Denominator was the sum of all eligible Medicare FFS beneficiaries who were in the CMS denominator file during the measurement time frame
- Eligible beneficiaries were computed after adjusting for total enrolled FFS days divided by the total measurement days in the time frame
- Where Medicare FFS enrolled days > 0

Numerator

- Unique Medicare FFS beneficiaries with disease-specific inpatient or outpatient claims during the time frame
- CCW and AHRQ disease diagnosis code match (ICD-9-CM codes) Part A dgns_cd_1-25 and dgns_e_cd_1-3; Match Part B dgns_cd_1_12

Exclusions

- HMO coverage period
- Age <18 or >= 110; Age calculated as end date of time frame or date of death – birth date
- Eligible Medicare FFS days/total measurement days = 0

Model

- Logistic Regression Models were used to determine the top five risk factors with the highest Odds Ratios (OR) ($p < 0.001$)

Resources

More information on the classification codes, requirements, and processing of the combination measure of depression or proxy disorders which includes beneficiaries reported for either depression, anxiety, or adjustment disorders can be located at the following links:

- Buccaneer, A General Dynamics Company. Chronic Condition Data Warehouse: Additions and Access – Task Order 10 New Clinical Conditions: Requirements and Processing
- [Internet]. [unknown]: Buccaneer, A General Dynamics Company. 2013 May 22 [cited 17 Sep 2013]. Available from: https://www.ccwdata.org/cs/groups/public/documents/document/clin_cond_algo_req_proc.pdf
- Healthcare Cost and Utilization Project (H-CUP). Clinical Classifications Software (CCS) for ICD-9-CM [Internet]. Rockville (MD): Agency for Healthcare Research and Quality; Nov 2013 [15 Sep 2013]. Available from: <http://www.hcup-us.ahrq.gov/toolssoftware/ccs/ccs.jsp>

Literature Review References for Risk Factors for Depression or Proxy Disorders

National Alliance on Mental Illness. Information Helpline: Depression in Older Persons Fact Sheet [Internet]. Arlington (VA): National Alliance on Mental Illness; 2009 Oct [cited 2013 Sep 17]. Available from: <http://www.nami.org/Template.cfm?Section=Helpline1&Template=/ContentManagement/ContentDisplay.cfm&ContentID=144039>

National Institute of Mental Health. Depression: Causes and Risk Factors [Internet]. Bethesda (MD): National Institute of Mental Health; 2013 Jul [cited 2013 Sep 17]. Available from: <http://nihseniorhealth.gov/depression/causesandriskfactors/01.html>

Centers for Disease Control and Prevention and National Association of Chronic Disease Directors. The State of Mental Health and Aging in America [Internet]. Atlanta (GA): National Association of Chronic Disease Directors, 2008 [cited 2013 Sep 19]. 11 p. Available from: http://www.cdc.gov/aging/pdf/mental_health.pdf

Jacques L, Jensen T, Schafer J, Caplan S, Schott L. Final Coverage Decision Memorandum for Screening for Depression in Adults [Internet]. Baltimore (MD): Centers for Medicare & Medicaid Services; 2011 Oct 14 [cited 2013 Sep 18]. 42 p. Available from: <http://www.cms.gov/medicare-coverage-database/details/nca-decision-memo.aspx?NCAId=251>

Thakur M, Blazer DG. Depression in long-term care. *Journal of the American Medical Directors Association* [Internet]. 2008 Feb [cited 2013 Sep 19];9(2):82-87. Available from: <http://www.amda.com/tools/clinical/depression/DepressioninLongTermCare.pdf>

Sozeri-Varma G. Depression in the elderly: clinical features and risk factors. *Aging and Disease* [Internet]. 2012 Dec [cited 2013 Sep 18];3(6):465-471. Available from: <http://www.ncbi.nlm.nih.gov/pmc/articles/PMC3522513/>

Qian J, Simoni-Wastila L, Rattinger GB, Lehmann S, Langenberg P, et al. Associations of depression diagnosis and antidepressant treatment with mortality among young and disabled Medicare beneficiaries with COPD. *General Hospital Psychiatry*. 2013 Jul 18 [cited 2013 Sep 22]; 35(6):612-618.

APPENDIX B

Shao W, Ahmad R, Khutoryansky N, Aagren M, Bouchard J. Evidence supporting an association between hypoglycemic events and depression. *Current Medical Research and Opinion*. 2013 Sep 23 [cited 2013 Sep 22]: 1-7.

Substance Abuse and Mental Health Services Administration. *The Treatment of Depression in Older Adults: Depression and Older Adults: Key Issues* [Internet]. Rockville, MD: Center for Mental Health Services, Substance Abuse and Mental Health Services Administration, U.S. Department of Health and Human Services, 2011 [cited 2013 Sep 24]. HHS Pub. No. SMA-11-4631. 24 p. Available from: <http://store.samhsa.gov/shin/content/SMA11-4631CD-DVD/SMA11-4631CD-DVD-KeyIssues.pdf>

Himelhoch S, Weller WE, Wu AW, Anderson GF, Cooper LA. Chronic medical illness, depression, and use of acute medical services among Medicare beneficiaries. *Medical Care*. 2004 Jun [cited 2013 Sep 25];42(6):512-521.

Mohile SG, Fan L, Reeve E, Jean-Pierre P, Mustian K, et al. Association of cancer with geriatric syndromes in older Medicare beneficiaries. *Journal of Clinical Oncology: Official Journal of the American Society of Clinical Oncology* [Internet]. 2011 Apr 10 [cited 2013 Sep 25];29(11): 1458-1464. Available from: <http://www.ncbi.nlm.nih.gov/pmc/articles/PMC3082984/>

Jayadevappa R, Malkowicz SB, Chhatre S, Johnson JC, Gallo JJ. The burden of depression in prostate cancer. *Psycho-oncology*. 2012 Dec [cited 2013 Sep 26];21(12):1338-1345.

Missouri Department of Mental Health. *CPS Facts: Depression and Older Adults* [Internet]. Jefferson City(MO): Missouri Department of Mental Health, [date unknown, cited 2013 Sep 26], 2 p. Available from: <http://dmh.mo.gov/docs/mentalillness/elderlydepress.pdf>

Oregon State University, Washington State University, University of Idaho. *Depression in Later Life: Recognition and Treatment* [Internet]. Corvallis(OR): Pacific Northwest Extension Publication; 2004 Jul [Published April 1990; revised July 2000; cited 2013 Sep 29]; 32 p. Available from: <http://ir.library.oregonstate.edu/xmlui/bitstream/handle/1957/20713/pnw347.pdf>

Cole MG, Dendukuri N. Risk factors for depression among elderly community subjects: a systematic review and meta-analysis. *American Journal of Psychiatry* [Internet]. 2003 Jun [cited 2013 Sep 29]; 160(6):1147-1156. Available from: <http://ajp.psychiatryonline.org/article.aspx?articleid=176272>

Kohn R, Levav I, Garcia ID, Machuca ME, Tamashiro R. Prevalence, risk factors and aging vulnerability for psychopathology following a natural disaster in a developing country. *International Journal of Geriatric Psychiatry*. 2005 Sep [cited 2013 Sep 29];20(9):835-841.

Pietrzak RH, Southwick SM, Tracy M, Galea S, Norris FH. Posttraumatic stress disorder, depression, and perceived needs for psychological care in older persons affected by Hurricane Ike. *Journal of Affective Disorders* [Internet]. 2012 Apr [cited 2013 Sep 30];138(1-2):96-103. Available from: <http://www.ncbi.nlm.nih.gov/pmc/articles/PMC3306486/>

Oriol W. *Psychosocial Issues for Older Adults in Disasters* [Internet]. Washington (DC): Emergency Services and Disaster Relief Branch, Center for Mental Health Services (CMHS), Substance Abuse and Mental Health Services Administration; 1999 [cited 2013 Sep 30]; DHHS Publication No. ESDRB SMA 99-3323. 79 p. Available from: <http://store.samhsa.gov/shin/content/SMA99-3323/SMA99-3323.pdf>

O'Connor EA, Whitlock EP, Gaynes B, Beil TL. Screening for Depression in Adults and Older Adults in Primary Care: An Updated Systematic Review. [Internet]. Rockville (MD): Agency for Healthcare Research and Quality (US); 2009 Dec [cited 2013 Sept 30]. 167 p. (Evidence Synthesis No. 75. AHRQ Publication No. 10-05143-EF-1). Available from: <http://www.ncbi.nlm.nih.gov/books/NBK36403/pdf/TOC.pdf>

Noyes K, Liu H, Lyness JM, Friedman B. Medicare beneficiaries with depression: comparing diagnoses in claims data with the results of screening. *Psychiatric Services* [Internet]. 2011 Oct [cited 2013 Sep 30];62(10):1159-1166. Available from: http://ps.psychiatryonline.org/data/Journals/PSS/4336/pss6210_1159.pdf

The following table shows the ICD-9-CM codes for the top five risk factors for depression or proxy disorders:

Top Five Risk Factors for Depression or Proxy Disorders*	Numerator: Valid ICD-9-CM Codes
Alzheimer's Disease and Related Disorders or Senile Dementia	3311, 33111, 33119, 3312, 3317, 2900, 29010, 29011, 29012, 29013, 29020, 29021, 2903, 29040, 29041, 29042, 29043, 2940, 2941, 29410, 29411, 2948, 797
Sleep Disturbance	04672, 29182, 29285, 30740, 30741, 30742, 30748, 30749, 32700, 32701, 32702, 32709, 78050, 78051, 78052, 78059
Substance or Alcohol Abuse or Tobacco Use	2910, 2911, 2912, 2913, 2914, 2915, 2918, 29181, 29182, 29189, 2919, 2920, 29211, 29212, 2922, 29281, 29282, 29283, 29284, 29285, 29289, 2929, 30300, 30301, 30302, 30303, 30390, 30391, 30392, 30393, 30400, 30401, 30402, 30403, 30410, 30411, 30412, 30413, 30420, 30421, 30422, 30423, 30430, 30431, 30432, 30433, 30440, 30441, 30442, 30443, 30450, 30451, 30452, 30453, 30460, 30461, 30462, 30463, 30470, 30471, 30472, 30473, 30480, 30481, 30482, 30483, 30490, 30491, 30492, 30493, 30500, 30501, 30502, 30503, 3051, 30510, 30511, 30512, 30513, 30520, 30521, 30522, 30523, 30530, 30531, 30532, 30533, 30540, 30541, 30542, 30543, 30550, 30551, 30552, 30553, 30560, 30561, 30562, 30563, 30570, 30571, 30572, 30573, 30580, 30581, 30582, 30583, 30590, 30591, 30592, 30593, 33392, 3575, 4255, 5353, 53530, 53531, 5710, 5711, 5712, 5713, 64830, 64831, 64832, 64833, 64834, 65550, 65551, 65553, 76071, 76072, 76073, 76075, 7795, 7903, 96500, 96501, 96502, 96509, 9800, V110, V111, V112, V113, V114, V118, V119, V154, V1541, V1542, V1549, V1582, V6285, V6542, V663, V701, V702, V7101, V7102, V7109, V790, V791, V792, V793, V798, V799
Hip/Pelvic Fractures	73314, 73315, 73396, 73397, 73398, 8080, 8081, 8082, 8083, 80841, 80842, 80843, 80849, 80851, 80852, 80853, 80859, 8088, 8089, 82000, 82001, 82002, 82003, 82009, 82010, 82011, 82012, 82013, 82019, 82020, 82021, 82022, 82030, 82031, 82032, 8208, 8209
Amputations	8870, 8871, 8872, 8873, 8874, 8875, 8876, 8877, 8960, 8961, 8962, 8963, 8970, 8971, 8972, 8973, 8974, 8975, 8976, 8977, 9059, 99760, 99761, 99762, 99769

* Other risk factors for depression or proxy disorders analyzed include Acute Myocardial Infarction (AMI), Stroke/Transient Ischemic Attack, Coronary Artery Bypass Graft Surgery (CABG), Parkinson's Disease, Chronic Obstructive Pulmonary Disease and Bronchiectasis (COPD), Diabetes, Chronic Kidney Disease, Rheumatoid Arthritis/Osteoarthritis (RA/OA), Macular Degeneration, Disability, History of Cancer, Heart Failure, and Acquired Hypothyroidism.

APPENDIX C: UTILIZATION OF OUTPATIENT MENTAL HEALTH SERVICES

Documentation and Technical Notes

The following defines the study population, the time frame, and the exclusion and inclusion criteria:

Data Source

- New Jersey Medicare FFS Part A and Part B claims data and denominator file

Reference Time Period

- Annual utilization comparing October 1, 2011 – September 30, 2012 to January 1, 2013 – December 31, 2013
- Annual utilization trend consists of nine points of data with rolling quarters (starting January 1, 2011 and ending December 31, 2013)
- Quarterly utilization trend charts for depression screening contains data from January 1, 2012 to December 31, 2013

Mapping Tool

- QGIS Development Team, 2014, QGIS Geographic Information System. Open Source Geospatial Foundation Project. <http://qgis.osgeo.org>
- Source: ZIP code boundaries based on the 2013 U.S. Census Tiger Files

Denominator

- Denominator was the sum of all eligible Medicare FFS beneficiaries who were in the CMS denominator file during the measurement time frame
- Eligible beneficiaries were computed after adjusting for total enrolled FFS days divided by the total measurement days in the time frame
- Where Medicare FFS enrolled days > 0

Numerator

Unique Medicare FFS beneficiaries with specific outpatient mental health service claims

Exclusions

- HMO coverage period
- Age <18 or >= 110; Age calculated as end date of time frame or date of death – birth date
- Eligible Medicare FFS days/total measurement days =0

Resources

More information on the definitions and uses of the outpatient mental health services highlighted in this profile can be located at http://www.cmsbilling.org/forms/NHIC_Medicare_B_Mental_Health_billing_guide_2008.pdf.

The following table shows the CPT/HCPCS codes for the outpatient mental health services:

Mental Health Services	Numerator: CPT/HCPCS Codes
Assessments	
Depression Screening	G0444
Diagnostic Psychological Tests	96101, 96102, 96103, 96105, 96110, 96111
Health and Behavior Assessment/Intervention	96150, 96151, 96152, 96153, 96154, 96155
Neuropsychological Tests	96116, 96118, 96119, 96120
Psychiatric Diagnostic Procedures	90801, 90802, 90791, 90792
Therapies	
Individual Psychotherapy	90804, 90805, 90832, 90833, 90806, 90807, 90834, 90836, 90808, 90809, 90810, 90811, 90812, 90813, 90814, 90815, 90816, 90817, 90818, 90819, 90821, 90822, 90823, 90824, 90826, 90827, 90828, 90829, 90837, 90838, 90839, 90840
Family Psychotherapy	90846, 90847
Group Psychotherapy	90849, 90853, 90857
Electroconvulsive Therapy	90870
Biofeedback Therapy	90901, 90911

APPENDIX D: UTILIZATION OF SERVICES – INPATIENT AND OTHER SETTINGS

Documentation and Technical Notes

The following defines the study population, the time frame, and the exclusion and inclusion criteria:

Data Source

New Jersey Medicare FFS Part A claims data and denominator file

Reference Time Period

- Annual utilization comparing October 1, 2011 – September 30, 2012 to January 1, 2013 – December 31, 2013
- Annual utilization trend consists of nine points of data with rolling quarters (starting January 1, 2011 and ending December 31, 2013)

Denominator

- Denominator was the sum of all eligible Medicare FFS beneficiaries who were in the CMS denominator file during the measurement time frame
- Eligible beneficiaries were computed after adjusting for total enrolled FFS days divided by the total measurement days in the time frame
- Where Medicare FFS enrolled days > 0

Exclusions

- HMO coverage period
- Age <18 or >= 110; Age calculated as end date of time frame or date of death – birth date
- Eligible Medicare FFS days/total measurement days =0

Utilization Measure

Refer to Appendix E.

Numerator

Utilization Measure Description	Numerator
Acute Care Hospital Admission	Number of inpatient admissions (Nch_clm_type_cd = 60, 61)
30-Day Hospital Readmissions	Number of readmissions that occurred within 30 days of hospital discharge (Nch_clm_type_cd = 60, 61)
Emergency Department Visits	Number of emergency department visits, with subsequent inpatient admission (Nch_clm_type_cd = 60, 61 and revenue code in '0450''0451''0452''0456''0459''0981')
Emergency Department Visits within 30 Days of Hospital Discharge	Number of emergency department visits within 30 days of hospital discharge, with or without subsequent admission (Nch_clm_type_cd = 60, 61, 40 and revenue code in '0450''0451''0452''0456' '0459''0981')
Observation Stays	Number of observation stays, with subsequent inpatient admission (Nch_clm_type_cd = 60, 61 and revenue code in '0762')
Observation Stays within 30 Days of Hospital Discharge	Number of observation stays within 30 days of hospital discharge, with or without subsequent admission (Nch_clm_type_cd = 60, 61, 40 and revenue code in '0762')
Home Health Agency Services	Number of eligible beneficiaries with at least one home health agency claim (Nch_clm_type_cd = 10)
Skilled Nursing Facility Services	Number of eligible beneficiaries with at least one skilled nursing facility claim (Nch_clm_type_cd =20, 30)
Hospice Services	Number of eligible beneficiaries with at least one hospice claim (Nch_clm_type_cd = 50)
Medical Rehabilitation Services	Number of eligible beneficiaries with at least one medical rehabilitation claim (Nch_clm_type_cd = 60, 61 and hsp_id format: xxTxxx or between xx3025 and xx3099)
Psychiatric Hospital Admissions	Number of eligible beneficiaries with at least one psychiatric hospital admission claim (Nch_clm_type_cd = 60, 61 and hsp_id format: xxSxxx or between xx4000 and xx4499)

APPENDIX E: TIME FRAMES AND FORMULAE

Time Frames	
Quarters	Dates
Q1	January 1 to March 31
Q2	April 1 to June 30
Q3	July 1 to September 30
Q4	October 1 to December 31

Formulae

$$\text{Incidence} = \frac{\text{(Number of unique beneficiaries with new cases during the time frame, condition not present in the past 12 months)}}{\text{(Total unique beneficiaries in the population during the time frame)}}$$

$$\text{Prevalence} = \frac{\text{(Number of unique beneficiaries with the condition during the time frame)}}{\text{(Total unique beneficiaries in the population during the time frame)}}$$

$$\text{Utilization} = \frac{\text{(Number of unique beneficiaries or measures with specific service utilization)}}{\text{(Total unique beneficiaries in the population during the time frame)}}$$

$$\text{Relative change} = \frac{\text{(Current rate - Former rate)}}{\text{(Former rate)}}$$

APPENDIX F: REFERENCES

1. Weiss MG, Saraceno B, Saxena S, van Ommeren M. Mental health in the aftermath of disasters: consensus and controversy. *The Journal of Nervous and Mental Disease*. 2003 Sep; 191(9):611-615.
2. Foa EB, Stein DJ, McFarlane AC. Symptomatology and psychopathology of mental health problems after disaster. *The Journal of Clinical Psychology* [Internet]. 2006;[cited 16 Sep 2013];67 Suppl 2:15-25.
3. Wang PS, Gruber MJ, Powers RE, Schoenbaum M, Speier AH, Wells KB, Kessler RC. Mental health service use among hurricane Katrina survivors in the eight months after the disaster. *Psychiatry Services* [Internet]. 2007 Nov [cited 16 Sep 2013]; 58(11):1403-1411. Available from: <http://ps.psychiatryonline.org/data/Journals/PSS/3824/07ps1403.pdf>
4. Voelker R. Post-katrina mental health needs prompt group to compile disaster medicine guide. *JAMA*. 2006 Jan [cited 2013 Sep 17]; 295(3):259-260.
5. Centers for Medicare & Medicaid Services. Medicare Claims Database, Parts A and B, January 1, 2011 – March 31, 2013. Baltimore (MD): CMS, Department of Health and Human Services. Accessed: September 15, 2013.
6. U.S. Department of Commerce: United States Census Bureau, American Fact Finder [Internet]. Washington (DC): U.S. Department of Commerce. Median Income in the Past 12 Months (in 2012 Inflation-Adjusted Dollars); 2012 [cited 15 Sep 2013]; [about 2 screens]. Available from: http://factfinder2.census.gov/faces/tableservices/jsf/pages/productview.xhtml?pid=ACS_12_1YR_S1903&prodType=table
7. Centers for Medicare & Medicaid Services. Screening for Depression, February 2013. Available from: <https://www.cms.gov/Outreach-and-Education/Medicare-Learning-Network-MLN-MLNProducts/Downloads/Screening-for-Depression-Booklet-ICN907799.pdf>
8. Centers for Medicare & Medicaid Services. Mental Health Services Billing Guide, April 2013. Hingham (MA): NHIC, Corp. Apr 2013. 40 p.

APPENDIX G: PROVIDER SUMMARY TABLES AND PROVIDER LISTINGS

The following defines the data source and time period for the provider summary tables and listings:

Data Source

New Jersey Medicare Part A and Part B FFS claims data

Reference Time Period

Provider summary tables were based on Pre-Sandy time frame (Q1 2011-Q3 2012)

Mapping Tool

ArcGIS Explorer Online. ArcGIS® software by Esri. www.esri.com

Professional Type by Behavioral Health Services

The following defines the data source and time period for the provider summary tables and listings:

Data Source

New Jersey Medicare FFS Part B claims data

Reference Time Period

- Professional type of behavioral health service claims during October 1, 2011 – September 30, 2012 and January 1, 2013 – December 31, 2013

Professional Type Credentials

- Physicians: DO, MD
- Psychologists: PhD, PsyD, EdD
- Social Workers: MSW, LCSW
- Nurses: APN, RN, NP
- Others: Other

This Page Left Intentionally Blank

Executive Summary

Figure 1. Snapshot of Jersey City	10
-----------------------------------	----

Demographics

Figure 2. Total Medicare FFS Beneficiaries	11
Figure 3. Percent of Medicare FFS Beneficiaries in the General Population in 2012	11
Figure 4. Percent of Medicare FFS Beneficiary Population by Female	11
Figure 5. Percent of Medicare FFS Beneficiary Population by Race	12
Figure 6. Percent of Medicare FFS Beneficiary Population by Age	12
Figure 7. 2012 Median Household Income (65 years and above)	12

Prevalence and Incidence

Figure 8. Percent Change of Prevalence of Selected Behavioral Health Conditions	13
Figure 9. Quarterly New Incidence Trend of Selected Behavioral Health Conditions: Depression or Proxy Disorders	14
Figure 10. Quarterly New Incidence Trend of Other Selected Behavioral Health Conditions	14
Figure 11. Annual Prevalence Trend of Selected Behavioral Health Conditions: Depression or Proxy Disorders	15
Figure 12. Annual Prevalence Trend of Other Selected Behavioral Health Conditions	15
Figure 13. Demographics of Depression or Proxy Disorders	16
Figure 14. Depression or Proxy Disorders Rate by Demographic Group	17
Figure 15. Depression or Proxy Disorders Rate by Race	18
Figure 16. Depression or Proxy Disorders Rate by Gender	18
Figure 17. Depression or Proxy Disorders Rate by Age Group	18
Figure 18. Depression or Proxy Disorders (Annual Prevalence, Annual Trend, and Percent Change)	19
Figure 19. Quarterly New Incidence of Depression or Proxy Disorders	19
Figure 20. Prevalence of Depression or Proxy Disorders in 10 Counties	20
Figure 21. Hudson County Prevalence of Depression or Proxy Disorders	21
Figure 22. Depression (Annual Prevalence, Annual Trend, and Percent Change)	22
Figure 23. Quarterly New Incidence of Depression	22
Figure 24. Anxiety Disorders (Annual Prevalence, Annual Trend, and Percent Change)	23
Figure 25. Quarterly New Incidence of Anxiety Disorders	23
Figure 26. Adjustment Disorders (Annual Prevalence, Annual Trend, and Percent Change)	24
Figure 27. Quarterly New Incidence of Adjustment Disorders	24
Figure 28. PTSD (Annual Prevalence, Annual Trend, and Percent Change)	25
Figure 29. Quarterly New Incidence of PTSD	25
Figure 30. Alcohol or Substance Abuse (Annual Prevalence, Annual Trend, and Percent Change)	26
Figure 31. Quarterly New Incidence of Alcohol or Substance Abuse	26
Figure 32. Substance Abuse Alone (Annual Prevalence, Annual Trend, and Percent Change)	27
Figure 33. Quarterly New Incidence of Substance Abuse Alone	27

INDEX OF FIGURES

Figure 34. Suicide and Intentional Self-Inflicted Injury (Annual Prevalence, Annual Trend, and Percent Change)	28
Figure 35. Quarterly New Incidence of Suicide and Intentional Self-Inflicted Injury	28
Risk Factors for Depression or Proxy Disorders	
Figure 36. Percent Change of Prevalence of the Top Five Risk Factors of Depression or Proxy Disorders	29
Figure 37. Annual Prevalence Trend for Risk Factors of Depression or Proxy Disorders	30
Figure 38. Annual Prevalence of Any of the Top Five Risk Factors for Depression or Proxy Disorders	30
Figure 39. Prevalence of Any of the Top Five Risk Factors for Depression or Proxy Disorders in 10 Counties	31
Figure 40. Hudson County Prevalence of Any of the Top Five Risk Factors for Depression or Proxy Disorders	32
Figure 41. Annual Prevalence of Alzheimer’s Disease and Related Disorders or Senile Dementia	33
Figure 42. Annual Prevalence of Sleep Disturbance	33
Figure 43. Annual Prevalence of Substance or Alcohol Abuse or Tobacco Use	33
Figure 44. Annual Prevalence of Hip/Pelvic Fractures	34
Figure 45. Annual Prevalence of Amputations	34
Utilization of Outpatient Behavioral Health Services	
<i>Assessments</i>	
Figure 46. Percent Change of Behavioral Health Service Utilization – Assessments	35
Figure 47. Annual Utilization Trend of Behavioral Health Assessment Services	35
Figure 48. Depression Screening (Annual Utilization, Annual Trend, and Percent Change)	36
Figure 49. Quarterly Depression Screening	36
Figure 50. Provider Location for Depression Screening Claims for Medicare FFS Beneficiaries	37
Figure 51. Depression Screening Claims for Medicare FFS Beneficiaries	37
Figure 52. Depression Screening in 10 Counties	38
Figure 53. Hudson County Depression Screening	39
Figure 54. Neuropsychological Tests (Annual Utilization, Annual Trend, and Percent Change)	40
Figure 55. Provider Location for Neuropsychological Tests Claims for Medicare FFS Beneficiaries	41
Figure 56. Neuropsychological Tests Claims for Medicare FFS Beneficiaries	41
Figure 57. Psychiatric Diagnostic Procedures (Annual Utilization, Annual Trend, and Percent Change)	42
Figure 58. Provider Location for Psychiatric Diagnostic Procedures Claims for Medicare FFS Beneficiaries	43
Figure 59. Psychiatric Diagnostic Procedures Claims for Medicare FFS Beneficiaries	43

Therapies

Figure 60. Percent Change of Behavioral Health Service Utilization – Therapies	44
Figure 61. Annual Utilization Trend of Behavioral Health Therapy Services	44
Figure 62. Individual Psychotherapy (Annual Utilization, Annual Trend, and Percent Change)	45
Figure 63. Provider Location for Individual Psychotherapy Claims for Medicare FFS Beneficiaries	46
Figure 64. Individual Psychotherapy Claims for Medicare FFS Beneficiaries	46
Figure 65. Family Psychotherapy (Annual Utilization and Annual Trend)	47
Figure 66. Group Psychotherapy (Annual Utilization and Annual Trend)	48

Inpatient Health Services

Figure 67. Percent Change of Inpatient Health Service Utilization	49
Figure 68. Annual Utilization Trend of Inpatient Health Services	49
Figure 69. Psychiatric Hospital Admissions (Annual Utilization, Annual Trend, and Percent Change)	50

Acute Care Hospitals

Figure 70. Acute Care Hospital Admissions (Annual Utilization, Annual Trend, and Percent Change)	51
Figure 71. Observation Stays (Annual Utilization, Annual Trend, and Percent Change)	52
Figure 72. Emergency Department Visits (Annual Utilization, Annual Trend, and Percent Change)	53

Within 30 Days of Acute Care Hospital Discharge

Figure 73. Percent Change of Inpatient Health Service Utilization Within 30 Days of Discharge	54
Figure 74. Annual Utilization Trend of Inpatient Health Services Within 30 Days of Discharge	54
Figure 75. 30-Day Hospital Readmissions (Annual Utilization, Annual Trend, and Percent Change)	55
Figure 76. Observation Stays Within 30 Days of Discharge (Annual Utilization, Annual Trend, and Percent Change)	56
Figure 77. Emergency Department Visits Within 30 Days of Discharge (Annual Utilization, Annual Trend, and Percent Change)	57

Other Settings

Figure 78. Percent Change of Other Health Services Utilization	58
Figure 79. Annual Utilization Trend in Other Health Services	58
Figure 80. Home Health Agency Services (Annual Utilization, Annual Trend, and Percent Change)	59
Figure 81. Skilled Nursing Facility Services (Annual Utilization, Annual Trend, and Percent Change)	60
Figure 82. Hospice Services (Annual Utilization, Annual Trend, and Percent Change)	61
Figure 83. Medical Rehabilitation Services (Annual Utilization, Annual Trend, and Percent Change)	62

This page left intentionally blank



557 Cranbury Road, Suite 21
East Brunswick, NJ 08816
T 732-238-5570 • F 732-238-7766
www.hqsi.org